



# SZABO SCANDIC

Part of Europa Biosite

## Produktinformation



Forschungsprodukte & Biochemikalien



Zellkultur & Verbrauchsmaterial



Diagnostik & molekulare Diagnostik



Laborgeräte & Service

Weitere Information auf den folgenden Seiten!  
See the following pages for more information!



### Lieferung & Zahlungsart

siehe unsere [Liefer- und Versandbedingungen](#)

### Zuschläge

- Mindermengenzuschlag
- Trockeneiszuschlag
- Gefahrgutzuschlag
- Expressversand

### SZABO-SCANDIC HandelsgmbH

Quellenstraße 110, A-1100 Wien

T. +43(0)1 489 3961-0

F. +43(0)1 489 3961-7

[mail@szabo-scandic.com](mailto:mail@szabo-scandic.com)

[www.szabo-scandic.com](http://www.szabo-scandic.com)

[linkedin.com/company/szaboscandic](https://www.linkedin.com/company/szaboscandic)

# collectrin (h): 293T Lysate: sc-116311

## BACKGROUND

Collectrin, also known as TMEM27 (transmembrane protein 27) or NX17, is a 222 amino acid single-pass type I membrane protein belonging to the TMEM27 family. Collectrin interacts with Snapin to regulate SNARE complex function, which in turn controls Insulin exocytosis. Collectrin has been found to stimulate  $\beta$  cell replication and plays a role in renal amino acid uptake. Localizing to luminal surface and cytoplasm of renal collecting ducts of the cortex and medulla, collectrin is also found in  $\beta$  cells of pancreatic islets, where its extracellular domain becomes cleaved following translation and is released from the cell membrane. Collectrin exists as a homodimer, undergoes post-translational glycosylation and interacts with XTRP2.

## REFERENCES

- Zhang, H., Wada, J., Kanwar, Y.S., Tsuchiyama, Y., Hiragushi, K., Hida, K., Shikata, K. and Makino, H. 1999. Screening for genes upregulated in 5/6 nephrectomized mouse kidney. *Kidney Int.* 56: 549-558.
- Zhang, H., Wada, J., Hida, K., Tsuchiyama, Y., Hiragushi, K., Shikata, K., Wang, H., Lin, S., Kanwar, Y.S. and Makino, H. 2001. Collectrin, a collecting duct-specific transmembrane glycoprotein, is a novel homolog of ACE2 and is developmentally regulated in embryonic kidneys. *J. Biol. Chem.* 276: 17132-17139.
- Fukui, K., Yang, Q., Cao, Y., Takahashi, N., Hatakeyama, H., Wang, H., Wada, J., Zhang, Y., Marselli, L., Nammo, T., Yoneda, K., Onishi, M., Higashiyama, S., Matsuzawa, Y., Gonzalez, F.J., Weir, G.C., Kasai, H., Shimomura, I., et al. 2005. The HNF-1 target collectrin controls Insulin exocytosis by SNARE complex formation. *Cell Metab.* 2: 373-384.
- Danilczyk, U., Sarao, R., Remy, C., Benabbas, C., Stange, G., Richter, A., Arya, S., Pospisilik, J.A., Singer, D., Camargo, S.M., Makrides, V., Ramadan, T., Verrey, F., Wagner, C.A. and Penninger, J.M. 2006. Essential role for collectrin in renal amino acid transport. *Nature* 444: 1088-1091.
- Mount, D.B. 2007. Collectrin and the kidney. *Curr. Opin. Nephrol. Hypertens.* 16: 427-429.
- Online Mendelian Inheritance in Man, OMIM™. 2007. Johns Hopkins University, Baltimore, MD. MIM Number: 300631. World Wide Web URL: <http://www.ncbi.nlm.nih.gov/omim/>
- Pasquali, L., d'Annunzio, G., Gastaldi, R., Di Battista, E., Calcaterra, V., Larizza, D., Lorini, R. and D'Amato, E. 2009. Collectrin gene screening in Turner syndrome patients with kidney malformation. *J. Genet.* 88 105-108.

## CHROMOSOMAL LOCATION

Genetic locus: TMEM27 (human) mapping to Xp22.2.

## PRODUCT

collectrin (h): 293T Lysate represents a lysate of human collectrin transfected 293T cells and is provided as 100  $\mu$ g protein in 200  $\mu$ l SDS-PAGE buffer.

## STORAGE

Store at -20° C. Repeated freezing and thawing should be minimized. Sample vial should be boiled once prior to use. Non-hazardous. No MSDS required.

## APPLICATIONS

collectrin (h): 293T Lysate is suitable as a Western Blotting positive control for human reactive collectrin antibodies. Recommended use: 10-20  $\mu$ l per lane.

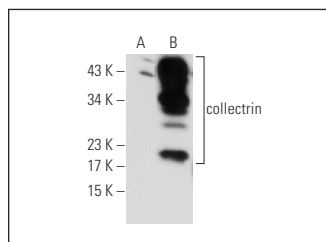
Control 293T Lysate: sc-117752 is available as a Western Blotting negative control lysate derived from non-transfected 293T cells.

collectrin (I-14): sc-135464 is recommended as a positive control antibody for Western Blot analysis of enhanced human collectrin expression in collectrin transfected 293T cells (starting dilution 1:100, dilution range 1:100-1:1,000).

## RECOMMENDED SECONDARY REAGENTS

To ensure optimal results, the following support (secondary) reagents are recommended: 1) Western Blotting: use goat anti-rabbit IgG-HRP: sc-2004 (dilution range: 1:2000-1:100,000) or Cruz Marker™ compatible goat anti-rabbit IgG-HRP: sc-2030 (dilution range: 1:2000-1:5000), Cruz Marker™ Molecular Weight Standards: sc-2035, TBS Blotto A Blocking Reagent: sc-2333 and Western Blotting Luminol Reagent: sc-2048.

## DATA



collectrin (I-14): sc-135464. Western blot analysis of collectrin expression in non-transfected: sc-117752 (A) and human collectrin transfected: sc-116311 (B) 293T whole cell lysates.

## RESEARCH USE

For research use only, not for use in diagnostic procedures.

## PROTOCOLS

See our web site at [www.scbt.com](http://www.scbt.com) or our catalog for detailed protocols and support products.