



# SZABO SCANDIC

Part of Europa Biosite

## Produktinformation



Forschungsprodukte & Biochemikalien



Zellkultur & Verbrauchsmaterial



Diagnostik & molekulare Diagnostik



Laborgeräte & Service

Weitere Information auf den folgenden Seiten!  
See the following pages for more information!



### Lieferung & Zahlungsart

siehe unsere [Liefer- und Versandbedingungen](#)

### Zuschläge

- Mindermengenzuschlag
- Trockeneiszuschlag
- Gefahrgutzuschlag
- Expressversand

### SZABO-SCANDIC HandelsgmbH

Quellenstraße 110, A-1100 Wien

T. +43(0)1 489 3961-0

F. +43(0)1 489 3961-7

[mail@szabo-scandic.com](mailto:mail@szabo-scandic.com)

[www.szabo-scandic.com](http://www.szabo-scandic.com)

[linkedin.com/company/szaboscandic](https://www.linkedin.com/company/szaboscandic) 

# CTRP2 (h): 293T Lysate: sc-116312

## BACKGROUND

CTRP2, also known as C1QTNF2 (C1q and tumor necrosis factor related protein 2) or zacrp2, is a 285 amino acid secreted protein that contains one C1q domain and one collagen-like domain and is encoded by a gene that maps to human chromosome 5. Chromosome 5 contains 181 million base pairs and comprises nearly 6% of the human genome. Chromosome 5 is associated with Cockayne syndrome through the ERCC8 gene and familial adenomatous polyposis through the adenomatous polyposis coli (APC) tumor suppressor gene. Treacher Collins syndrome is also chromosome 5-associated and is caused by insertions or deletions within the TCOF1 gene. Deletion of the p arm of chromosome 5 leads to Cri du Chat syndrome, while deletion of the q arm or of chromosome 5 altogether is common in therapy-related acute myelogenous leukemias and myelodysplastic syndrome.

## REFERENCES

- Dixon, M.J., Read, A.P., Donnai, D., Colley, A., Dixon, J. and Williamson, R. 1991. The gene for Treacher Collins syndrome maps to the long arm of chromosome 5. *Am. J. Hum. Genet.* 49: 17-22.
- Saltman, D.L., Dolganov, G.M., Warrington, J.A., Wasmuth, J.J. and Lovett, M. 1993. A physical map of 15 loci on human chromosome 5q23-q33 by two-color fluorescence *in situ* hybridization. *Genomics* 16: 726-732.
- Law, S.F., Zhang, Y.Z., Klein-Szanto, A.J. and Golemis, E.A. 1998. Cell cycle-regulated processing of HEF1 to multiple protein forms differentially targeted to multiple subcellular compartments. *Mol. Cell. Biol.* 18: 3540-3551.
- South, S.T., Swensen, J.J., Maxwell, T., Rope, A., Brothman, A.R. and Chen, Z. 2006. A new genomic mechanism leading to Cri du Chat syndrome. *Am. J. Med. Genet. A* 140A: 2714-2720.
- Du, H.Y., Idol, R., Robledo, S., Ivanovich, J., An, P., Londono-Vallejo, A., Wilson, D.B., Mason, P.J. and Bessler, M. 2007. Telomerase reverse transcriptase haploinsufficiency and telomere length in individuals with 5p-syndrome. *Aging Cell* 6: 689-697.

## CHROMOSOMAL LOCATION

Genetic locus: C1QTNF2 (human) mapping to 5q33.3.

## PRODUCT

CTRP2 (h): 293T Lysate represents a lysate of human CTRP2 transfected 293T cells and is provided as 100 µg protein in 200 µl SDS-PAGE buffer.

## APPLICATIONS

CTRP2 (h): 293T Lysate is suitable as a Western Blotting positive control for human reactive CTRP2 antibodies.

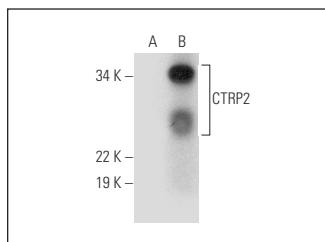
Control 293T Lysate: sc-117752 is available as a Western Blotting negative control lysate derived from non-transfected 293T cells.

CTRP2 (B-3): sc-390778 is recommended as a positive control antibody for Western Blot analysis of enhanced human CTRP2 expression in CTRP2 transfected 293T cells (starting dilution 1:100, dilution range 1:100-1:1,000).

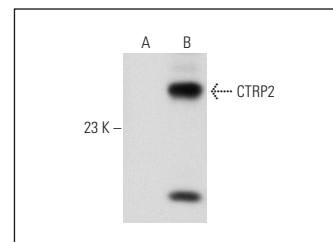
## RECOMMENDED SUPPORT REAGENTS

To ensure optimal results, the following support reagents are recommended:  
 1) Western Blotting: use m-IgGκ BP-HRP: sc-516102 or m-IgGκ BP-HRP (Cruz Marker): sc-516102-CM (dilution range: 1:1000-1:10000), Cruz Marker™ Molecular Weight Standards: sc-2035, UltraCruz® Blocking Reagent: sc-516214 and Western Blotting Luminol Reagent: sc-2048.

## DATA



CTRP2 (B-3): sc-390778. Western blot analysis of CTRP2 expression in non-transfected: sc-117752 (A) and human CTRP2 transfected: sc-116312 (B) 293T whole cell lysates.



CTRP2 (10B8): sc-134307. Western blot analysis of CTRP2 expression in non-transfected: sc-117752 (A) and human CTRP2 transfected: sc-116312 (B) 293T whole cell lysates.

## STORAGE

Store at -20° C. Repeated freezing and thawing should be minimized. Sample vial should be boiled once prior to use. Non-hazardous. No MSDS required.

## RESEARCH USE

For research use only, not for use in diagnostic procedures.

## PROTOCOLS

See our web site at [www.scbt.com](http://www.scbt.com) for detailed protocols and support products.