



# SZABO SCANDIC

Part of Europa Biosite

## Produktinformation



Forschungsprodukte & Biochemikalien



Zellkultur & Verbrauchsmaterial



Diagnostik & molekulare Diagnostik



Laborgeräte & Service

Weitere Information auf den folgenden Seiten!  
See the following pages for more information!



### Lieferung & Zahlungsart

siehe unsere [Liefer- und Versandbedingungen](#)

### Zuschläge

- Mindermengenzuschlag
- Trockeneiszuschlag
- Gefahrgutzuschlag
- Expressversand

### SZABO-SCANDIC HandelsgmbH

Quellenstraße 110, A-1100 Wien

T. +43(0)1 489 3961-0

F. +43(0)1 489 3961-7

[mail@szabo-scandic.com](mailto:mail@szabo-scandic.com)

[www.szabo-scandic.com](http://www.szabo-scandic.com)

[linkedin.com/company/szaboscandic](https://www.linkedin.com/company/szaboscandic) 

# CPE (h2): 293T Lysate: sc-116451

## BACKGROUND

Carboxypeptidase N (arginine carboxypeptidase or CPN) cleaves basic amino acid residues from the C-terminus of peptides and proteins. The enzyme plays a central role in regulating the biologic activity of peptides such as kinins and anaphylatoxins and therefore is also known as kininase-1 and anaphylatoxin inactivator. CPN is a tetrameric complex consisting of two identical regulatory subunits (CPN reg) and two identical catalytic subunits (CPN cat). CPN reg is a member of the leucine-rich repeat family of proteins and CPN cat is a member of the regulatory B-type carboxypeptidase group. Carboxypeptidase E (CPE) is important for removing any remaining C-terminal Arg or Lys after initial endoprotease cleavage during prohormone processing. CPE is also crucial in proinsulin processing, and required for normal-sized photoreceptor synaptic terminal and normal signal transmission to the inner retina.

## REFERENCES

- Zhu, X., Wu, K., Rife, L., Cawley, N.X., Brown, B., Adams, T., Teofilo, K., Lillo, C., Williams, D.S., Loh, Y.P. and Craft, C.M. 2005. Carboxypeptidase E is required for normal synaptic transmission from photoreceptors to the inner retina. *J. Neurochem.* 95: 1351-1362.
- Hosaka, M., Watanabe, T., Sakai, Y., Kato, T. and Takeuchi, T. 2005. Interaction between secretogranin III and carboxypeptidase E facilitates prohormone sorting within secretory granules. *J. Cell Sci.* 118: 4785-4795.
- Johnston, R.A., Theman, T.A. and Shore, S.A. 2005. Augmented responses to ozone in obese carboxypeptidase E deficient mice. *Am. J. Physiol. Regul. Integr. Comp. Physiol.* 290: R26-133.
- Marzban, L., Soukhatcheva, G. and Verchere, C.B. 2005. Role of carboxypeptidase E in processing of pro-islet amyloid polypeptide in  $\beta$  cells. *Endocrinology* 146: 1808-1817.
- Lou, H., Kim, S.K., Zaitsev, E., Snell, C.R., Lu, B. and Loh, Y.P. 2005. Sorting and activity-dependent secretion of BDNF require interaction of a specific motif with the sorting receptor carboxypeptidase E. *Neuron* 45: 245-255.

## CHROMOSOMAL LOCATION

Genetic locus: CPE (human) mapping to 4q32.3.

## PRODUCT

CPE (h2): 293T Lysate represents a lysate of human CPE transfected 293T cells and is provided as 100  $\mu$ g protein in 200  $\mu$ l SDS-PAGE buffer.

## APPLICATIONS

CPE (h2): 293T Lysate is suitable as a Western Blotting positive control for human reactive CPE antibodies. Recommended use: 10-20  $\mu$ l per lane.

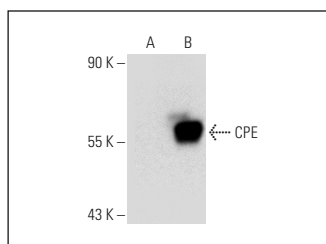
Control 293T Lysate: sc-117752 is available as a Western Blotting negative control lysate derived from non-transfected 293T cells.

CPE (H-6): sc-393760 is recommended as a positive control antibody for Western Blot analysis of enhanced human CPE expression in CPE transfected 293T cells (starting dilution 1:100, dilution range 1:100-1:1,000).

## RECOMMENDED SUPPORT REAGENTS

To ensure optimal results, the following support reagents are recommended:  
1) Western Blotting: use m-IgG $\kappa$  BP-HRP: sc-516102 or m-IgG $\kappa$  BP-HRP (Cruz Marker): sc-516102-CM (dilution range: 1:1000-1:10000), Cruz Marker™ Molecular Weight Standards: sc-2035, UltraCruz® Blocking Reagent: sc-516214 and Western Blotting Luminol Reagent: sc-2048.

## DATA



CPE (H-6): sc-393760. Western blot analysis of CPE expression in non-transfected: sc-117752 (A) and human CPE transfected: sc-116451 (B) 293T whole cell lysates.

## STORAGE

Store at -20° C. Repeated freezing and thawing should be minimized. Sample vial should be boiled once prior to use. Non-hazardous. No MSDS required.

## RESEARCH USE

For research use only, not for use in diagnostic procedures.

## PROTOCOLS

See our web site at [www.scbt.com](http://www.scbt.com) for detailed protocols and support products.