



# SZABO SCANDIC

Part of Europa Biosite

## Produktinformation



Forschungsprodukte & Biochemikalien



Zellkultur & Verbrauchsmaterial



Diagnostik & molekulare Diagnostik



Laborgeräte & Service

Weitere Information auf den folgenden Seiten!  
See the following pages for more information!



### Lieferung & Zahlungsart

siehe unsere [Liefer- und Versandbedingungen](#)

### Zuschläge

- Mindermengenzuschlag
- Trockeneiszuschlag
- Gefahrgutzuschlag
- Expressversand

### SZABO-SCANDIC HandelsgmbH

Quellenstraße 110, A-1100 Wien

T. +43(0)1 489 3961-0

F. +43(0)1 489 3961-7

[mail@szabo-scandic.com](mailto:mail@szabo-scandic.com)

[www.szabo-scandic.com](http://www.szabo-scandic.com)

[linkedin.com/company/szaboscandic](https://www.linkedin.com/company/szaboscandic) 

# STK16 (h): 293T Lysate: sc-116468

## BACKGROUND

The phosphorylation of proteins by protein kinases and protein phosphatases is a key event in most nuclear and cytoplasmic processes. The ability to activate and deactivate proteins via phosphorylation or dephosphorylation is important for cell division, cell differentiation, DNA repair and transcription. STK16 (serine/threonine kinase 16), also known as KRCT, MPSK, TSF1 or PKL12, is a 305 amino acid lipid-anchored membrane protein that belongs to the superfamily of serine/threonine protein kinases. Expressed ubiquitously at low levels, STK16 is a protein kinase that can catalytically phosphorylate both serine and threonine residues on a variety of proteins. STK16 functions in an ATP-dependent manner and contains one protein kinase domain. Over-expression of STK16 causes disorganization of the Golgi apparatus, suggesting an additional role for STK16 in the secretory pathway. Human STK16 shares 94% sequence identity with its mouse counterpart, indicating a conserved function between species.

## REFERENCES

- Ligos, J.M., Gerwin, N., Fernández, P., Gutierrez-Ramos, J.C. and Bernad, A. 1998. Cloning, expression analysis, and functional characterization of PKL12, a member of a new subfamily of Ser/Thr kinases. *Biochem. Biophys. Res. Commun.* 249: 380-384.
- Berson, A.E., Young, C., Morrison, S.L., Fujii, G.H., Sheung, J., Wu, B., Bolen, J.B. and Burkhardt, A.L. 1999. Identification and characterization of a myristylated and palmitylated serine/threonine protein kinase. *Biochem. Biophys. Res. Commun.* 259: 533-538.
- Ohta, S., Takeuchi, M., Deguchi, M., Tsuji, T., Gahara, Y. and Nagata, K. 2000. A novel transcriptional factor with Ser/Thr kinase activity involved in the transforming growth factor (TGF)- $\beta$  signalling pathway. *Biochem. J.* 350: 395-404.
- Ligos, J.M., de Lera, T.L., Hinderlich, S., Guinea, B., Sánchez, L., Roca, R., Valencia, A. and Bernad, A. 2002. Functional interaction between the Ser/Thr kinase PKL12 and N-acetylglucosamine kinase, a prominent enzyme implicated in the salvage pathway for GlcNAc recycling. *J. Biol. Chem.* 277: 6333-6343.
- Online Mendelian Inheritance in Man, OMIM™. 2002. Johns Hopkins University, Baltimore, MD. MIM Number: 604719. World Wide Web URL: <http://www.ncbi.nlm.nih.gov/omim/>
- Guinea, B., Ligos, J.M., Laín de Lera, T., Martín-Caballero, J., Flores, J., Gonzalez de la Peña, M., García-Castro, J. and Bernad, A. 2006. Nucleo-cytoplasmic shuttling of STK16 (PKL12), a Golgi-resident serine/threonine kinase involved in VEGF expression regulation. *Exp. Cell Res.* 312: 135-144.
- Eswaran, J., Bernad, A., Ligos, J.M., Guinea, B., Debreczeni, J.E., Sobott, F., Parker, S.A., Najmanovich, R., Turk, B.E. and Knapp, S. 2008. Structure of the human protein kinase MPSK1 reveals an atypical activation loop architecture. *Structure* 16: 115-124.

## STORAGE

Store at -20° C. Repeated freezing and thawing should be minimized. Sample vial should be boiled once prior to use. Non-hazardous. No MSDS required.

## CHROMOSOMAL LOCATION

Genetic locus: STK16 (human) mapping to 2q35.

## PRODUCT

STK16 (h): 293T Lysate represents a lysate of human STK16 transfected 293T cells and is provided as 100  $\mu$ g protein in 200  $\mu$ l SDS-PAGE buffer.

## APPLICATIONS

STK16 (h): 293T Lysate is suitable as a Western Blotting positive control for human reactive STK16 antibodies. Recommended use: 10-20  $\mu$ l per lane.

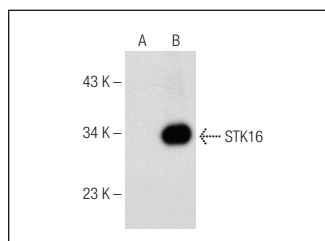
Control 293T Lysate: sc-117752 is available as a Western Blotting negative control lysate derived from non-transfected 293T cells.

STK16 (B-10): sc-374356 is recommended as a positive control antibody for Western Blot analysis of enhanced human STK16 expression in STK16 transfected 293T cells (starting dilution 1:100, dilution range 1:100-1:1,000).

## RECOMMENDED SUPPORT REAGENTS

To ensure optimal results, the following support reagents are recommended: 1) Western Blotting: use m-IgG $\kappa$  BP-HRP: sc-516102 or m-IgG $\kappa$  BP-HRP (Cruz Marker): sc-516102-CM (dilution range: 1:1000-1:10000), Cruz Marker™ Molecular Weight Standards: sc-2035, UltraCruz® Blocking Reagent: sc-516214 and Western Blotting Luminol Reagent: sc-2048.

## DATA



STK16 (B-10): sc-374356. Western blot analysis of STK16 expression in non-transfected: sc-117752 (A) and human STK16 transfected: sc-116468 (B) 293T whole cell lysates.

## RESEARCH USE

For research use only, not for use in diagnostic procedures.

## PROTOCOLS

See our web site at [www.scbt.com](http://www.scbt.com) for detailed protocols and support products.