



# SZABO SCANDIC

Part of Europa Biosite

## Produktinformation



Forschungsprodukte & Biochemikalien



Zellkultur & Verbrauchsmaterial



Diagnostik & molekulare Diagnostik



Laborgeräte & Service

Weitere Information auf den folgenden Seiten!  
See the following pages for more information!



### Lieferung & Zahlungsart

siehe unsere [Liefer- und Versandbedingungen](#)

### Zuschläge

- Mindermengenzuschlag
- Trockeneiszuschlag
- Gefahrgutzuschlag
- Expressversand

### SZABO-SCANDIC HandelsgmbH

Quellenstraße 110, A-1100 Wien

T. +43(0)1 489 3961-0

F. +43(0)1 489 3961-7

[mail@szabo-scandic.com](mailto:mail@szabo-scandic.com)

[www.szabo-scandic.com](http://www.szabo-scandic.com)

[linkedin.com/company/szaboscandic](https://www.linkedin.com/company/szaboscandic) 

# NHERF-1 (h2): 293T Lysate: sc-116473

## BACKGROUND

The Na<sup>+</sup>/H<sup>+</sup> exchange protein (NHE3) functions in transepithelial Na<sup>+</sup> absorption and is primarily expressed in the intestinal and renal brush border membrane. NHE3 regulatory factor 1 (NHERF-1) interacts with NHE3 through two PDZ (for PSD-95, discs-large and ZO-1 homology) domains, which are protein-protein interaction modules that associate with specific carboxy-terminal motifs on target proteins. Also known as EBP50, NHERF-1 facilitates cAMP inhibition of NHE3 to decrease Na<sup>+</sup> adsorption. NHERF-1 functions as a scaffold for an essential multiprotein complex of Ezrin and NHE3 for cAMP-mediated phosphorylation and consequent inhibition of NHE3. The amino-terminal PDZ domain regulates the dimerization of NHERF-1 *in vivo*. G protein-coupled receptor kinase 6A phosphorylates NHERF-1 at Ser 289 via a PDZ domain-mediated interaction. NHERF-2, also known as E3KARP, is an ubiquitously expressed protein which also functions in NHE2 regulation.

## REFERENCES

1. Aronson, P.S., et al. 1986. Molecular-properties and physiological roles of the renal Na<sup>+</sup>/H<sup>+</sup> exchanger. *Curr. Top. Mem. Trans.* 26: 57-75.
2. Sheng, M. 1996. PDZs and receptor/channel clustering: rounding up the latest suspects. *Neuron* 17: 575-578.
3. Yun, C.H., et al. 1997. cAMP-mediated inhibition of the epithelial brush border Na<sup>+</sup>/H<sup>+</sup> exchanger, NHE3, requires an associated regulatory protein. *Proc. Natl. Acad. Sci. USA* 94: 3010-3015.
4. Poulat, F., et al. 1997. The human testis determining factor SRY binds a nuclear factor containing PDZ protein interaction domains. *J. Biol. Chem.* 272: 7167-7172.
5. Imai, K., et al. 1998. Genomic structure and sequence of a human homologue (NTHL1/NTH1) of *Escherichia coli* endonuclease III with those of the adjacent parts of TSC2 and SLC9A3R2 genes. *Gene* 222: 287-295.
6. Hall, R.A., et al. 1999. G protein-coupled receptor kinase 6A phosphorylates the Na<sup>+</sup>/H<sup>+</sup> exchanger regulatory factor via a PDZ domain-mediated interaction. *J. Biol. Chem.* 274: 24328-24334.
7. Weinman, E.J., et al. 2000. NHERF associations with sodium-hydrogen exchanger isoform 3 (NHE3) and Ezrin are essential for cAMP-mediated phosphorylation and inhibition of NHE3. *Biochem.* 39: 6123-6129.
8. Shenolikar, S., et al. 2001. N-terminal PDZ domain is required for NHERF dimerization. *FEBS Lett.* 489: 233-236.

## CHROMOSOMAL LOCATION

Genetic locus: NHERF (human) mapping to 17q25.1.

## PRODUCT

NHERF-1 (h2): 293T Lysate represents a lysate of human NHERF-1 transfected 293T cells and is provided as 100 µg protein in 200 µl SDS-PAGE buffer.

## STORAGE

Store at -20° C. Repeated freezing and thawing should be minimized. Sample vial should be boiled once prior to use. Non-hazardous. No MSDS required.

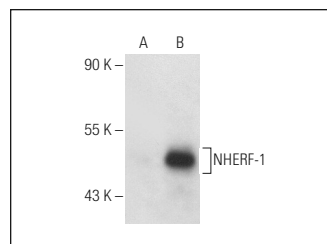
## APPLICATIONS

NHERF-1 (h2): 293T Lysate is suitable as a Western Blotting positive control for human reactive NHERF-1 antibodies. Recommended use: 10-20 µl per lane.

Control 293T Lysate: sc-117752 is available as a Western Blotting negative control lysate derived from non-transfected 293T cells.

NHERF-1 (4i337): sc-71697 is recommended as a positive control antibody for Western Blot analysis of enhanced human NHERF-1 expression in NHERF-1 transfected 293T cells (starting dilution 1:100, dilution range 1:100-1:1,000).

## DATA



NHERF-1 (4i337): sc-71697. Western blot analysis of NHERF-1 expression in non-transfected: sc-117752 (A) and human NHERF-1 transfected: sc-116473 (B) 293T whole cell lysates.

## RESEARCH USE

For research use only, not for use in diagnostic procedures.

## PROTOCOLS

See our web site at [www.scbt.com](http://www.scbt.com) for detailed protocols and support products.