



# SZABO SCANDIC

Part of Europa Biosite

## Produktinformation



Forschungsprodukte & Biochemikalien



Zellkultur & Verbrauchsmaterial



Diagnostik & molekulare Diagnostik



Laborgeräte & Service

Weitere Information auf den folgenden Seiten!  
See the following pages for more information!



### Lieferung & Zahlungsart

siehe unsere [Liefer- und Versandbedingungen](#)

### Zuschläge

- Mindermengenzuschlag
- Trockeneiszuschlag
- Gefahrgutzuschlag
- Expressversand

### SZABO-SCANDIC HandelsgmbH

Quellenstraße 110, A-1100 Wien

T. +43(0)1 489 3961-0

F. +43(0)1 489 3961-7

[mail@szabo-scandic.com](mailto:mail@szabo-scandic.com)

[www.szabo-scandic.com](http://www.szabo-scandic.com)

[linkedin.com/company/szaboscandic](https://www.linkedin.com/company/szaboscandic) 

# RCC2 (h): 293T Lysate: sc-116533

## BACKGROUND

RCC2 (regulator of chromosome condensation 2), also known as KIAA1470 or TD60, is a 522 amino acid protein that contains 7 RCC1 repeats and is expressed in a variety of mammalian tissues. Localized to the nucleus, as well as to centromeres and the midzone of the mitotic spindle in a cell-cycle dependent manner, RCC2 binds to Rac 1 and is required for the completion of mitosis and cytokinesis, possibly functioning as a guanine nucleotide exchange factor for Rac 1. RCC2 is subject to DNA damage-dependent phosphorylation, probably by ATM or ATR. The gene encoding RCC2 maps to human chromosome 1, which spans 260 million base pairs, contains over 3,000 genes and comprises nearly 8% of the human genome. Chromosome 1 houses a large number of disease-associated genes, including those that are involved in familial adenomatous polyposis, Stickler syndrome, Parkinson's disease, Gaucher disease, schizophrenia and Usher syndrome. Aberrations in chromosome 1 are found in a variety of cancers, including head and neck cancer, malignant melanoma and multiple myeloma.

## REFERENCES

- Andreassen, P.R., Palmer, D.K., Wener, M.H. and Margolis, R.L. 1991. Telophase disc: a new mammalian mitotic organelle that bisects telophase cells with a possible function in cytokinesis. *J. Cell Sci.* 99: 523-534.
- Martineau-Thuillier, S., Andreassen, P.R. and Margolis, R.L. 1998. Co-localization of TD-60 and INCENP throughout G<sub>2</sub> and mitosis: evidence for their possible interaction in signalling cytokinesis. *Chromosoma* 107: 461-470.
- Mollinari, C., Reynaud, C., Martineau-Thuillier, S., Monier, S., Kieffer, S., Garin, J., Andreassen, P.R., Boulet, A., Goud, B., Kleman, J.P. and Margolis, R.L. 2003. The mammalian passenger protein TD-60 is an RCC1 family member with an essential role in prometaphase to metaphase progression. *Dev. Cell* 5: 295-307.
- Yang, F., Camp, D.G., Gritsenko, M.A., Luo, Q., Kelly, R.T., Clauss, T.R., Brinkley, W.R., Smith, R.D. and Stenoien, D.L. 2007. Identification of a novel mitotic phosphorylation motif associated with protein localization to the mitotic apparatus. *J. Cell Sci.* 120: 4060-4070.
- Stacey, S.N., Gudbjartsson, D.F., Sulem, P., Bergthorsson, J.T., Kumar, R., Thorleifsson, G., Sigurdsson, A., Jakobsdottir, M., Sigurgeirsson, B., Benediktsson, K.R., Thorisdottir, K., Ragnarsson, R., Scherer, D., Rudnai, P., et al. 2008. Common variants on 1p36 and 1q42 are associated with cutaneous basal cell carcinoma but not with melanoma or pigmentation traits. *Nat. Genet.* 40: 1313-1318.
- Rosasco-Nitcher, S.E., Lan, W., Khorasanizadeh, S. and Stukenberg, P.T. 2008. Centromeric Aurora-B activation requires TD-60, microtubules, and substrate priming phosphorylation. *Science* 319: 469-472.
- Online Mendelian Inheritance in Man, OMIM™. 2008. Johns Hopkins University, Baltimore, MD. MIM Number: 609587. World Wide Web URL: <http://www.ncbi.nlm.nih.gov/omim/>

## STORAGE

Store at -20° C. Repeated freezing and thawing should be minimized. Sample vial should be boiled once prior to use. Non-hazardous. No MSDS required.

## CHROMOSOMAL LOCATION

Genetic locus: RCC2 (human) mapping to 1p36.13.

## PRODUCT

RCC2 (h): 293T Lysate represents a lysate of human RCC2 transfected 293T cells and is provided as 100 µg protein in 200 µl SDS-PAGE buffer.

## APPLICATIONS

RCC2 (h): 293T Lysate is suitable as a Western Blotting positive control for human reactive RCC2 antibodies. Recommended use: 10-20 µl per lane.

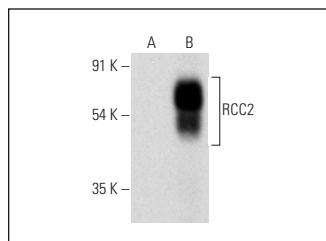
Control 293T Lysate: sc-117752 is available as a Western Blotting negative control lysate derived from non-transfected 293T cells.

RCC2 (G-5): sc-514340 is recommended as a positive control antibody for Western Blot analysis of enhanced human RCC2 expression in RCC2 transfected 293T cells (starting dilution 1:100, dilution range 1:100-1:1,000).

## RECOMMENDED SUPPORT REAGENTS

To ensure optimal results, the following support reagents are recommended: 1) Western Blotting: use m-IgGκ BP-HRP: sc-516102 or m-IgGκ BP-HRP (Cruz Marker): sc-516102-CM (dilution range: 1:1000-1:10000), Cruz Marker™ Molecular Weight Standards: sc-2035, UltraCruz® Blocking Reagent: sc-516214 and Western Blotting Luminol Reagent: sc-2048.

## DATA



RCC2 (G-5): sc-514340. Western blot analysis of RCC2 expression in non-transfected: sc-117752 (A) and human RCC2 transfected: sc-116533 (B) 293T whole cell lysates.

## RESEARCH USE

For research use only, not for use in diagnostic procedures.

## PROTOCOLS

See our web site at [www.scbt.com](http://www.scbt.com) for detailed protocols and support products.