



SZABO SCANDIC

Part of Europa Biosite

Produktinformation



Forschungsprodukte & Biochemikalien



Zellkultur & Verbrauchsmaterial



Diagnostik & molekulare Diagnostik



Laborgeräte & Service

Weitere Information auf den folgenden Seiten!
See the following pages for more information!



Lieferung & Zahlungsart

siehe unsere [Liefer- und Versandbedingungen](#)

Zuschläge

- Mindermengenzuschlag
- Trockeneiszuschlag
- Gefahrgutzuschlag
- Expressversand

SZABO-SCANDIC HandelsgmbH

Quellenstraße 110, A-1100 Wien

T. +43(0)1 489 3961-0

F. +43(0)1 489 3961-7

mail@szabo-scandic.com

www.szabo-scandic.com

[linkedin.com/company/szaboscandic](https://www.linkedin.com/company/szaboscandic) 

SREBP-2 (h): 293T Lysate: sc-116625

BACKGROUND

The low density lipoprotein (LDL) receptor mediates the endocytic uptake of cholesterol-carrying lipoproteins, thereby controlling cholesterol levels in cells and plasma. Transcription of the LDL receptor gene is controlled by a 10 base pair sequence in the 5' flanking region, designated sterol regulatory element 1 (SRE-1). When cellular sterol stores are depleted, the element is activated, the gene is transcribed and the cellular uptake of LDL increases. A set of SRE-binding proteins (SREBPs) have been identified, including two basic helix-loop-helix-leucine zipper (bHLH-Zip) transcription factors, designated SREBP-1 and SREBP-2. SREBP-1 and SREBP-2 have been shown to have the same specificity for SRE-1 *in vitro* and to activate the transcription of reporter genes containing SRE-1 in the same way.

REFERENCES

1. Brown, M.S., et al. 1986. A receptor-mediated pathway for cholesterol homeostasis. *Science* 232: 34-47.
2. Smith, J.R., et al. 1990. Identification of nucleotides responsible for enhancer activity of sterol regulatory element in low density lipoprotein receptor gene. *J. Biol. Chem.* 265: 2306-2310.
3. Goldstein, J.L., et al. 1990. Regulation of the mevalonate pathway. *Nature* 343: 425-430.
4. Briggs, M.R., et al. 1993. Nuclear protein that binds sterol regulatory element of LDL receptor promoter. I. Identification of the protein and delineation of its target nucleotide sequence. *J. Biol. Chem.* 268: 14490-14496.
5. Wang, X., et al. 1993. Nuclear protein that binds sterol regulatory element of LDL receptor promoter. II. Purification and characterization. *J. Biol. Chem.* 268: 14497-14504.
6. Hua, X., et al. 1993. SREBP-2, a second basic-helix-loop-helix-leucine zipper protein that stimulates transcription by binding to a sterol regulatory element. *Proc. Natl. Acad. Sci. USA* 90: 11603-11607.
7. Wang, X., et al. 1994. SREBP-1, a membrane-bound transcription factor released by sterol-regulated proteolysis. *Cell* 77: 53-62.
8. Murphy, C., et al. 2007. Regulation by SREBP-2 defines a potential link between isoprenoid and adenosylcobalamin metabolism. *Biochem. Biophys. Res. Commun.* 355: 359-364.

CHROMOSOMAL LOCATION

Genetic locus: SREBF2 (human) mapping to 22q13.2.

PRODUCT

SREBP-2 (h): 293T Lysate represents a lysate of human SREBP-2 transfected 293T cells and is provided as 100 µg protein in 200 µl SDS-PAGE buffer.

STORAGE

Store at -20° C. Repeated freezing and thawing should be minimized. Sample vial should be boiled once prior to use. Non-hazardous. No MSDS required.

APPLICATIONS

SREBP-2 (h): 293T Lysate is suitable as a Western Blotting positive control for human reactive SREBP-2 antibodies. Recommended use: 10-20 µl per lane.

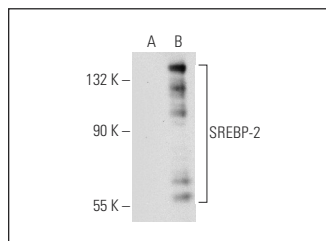
Control 293T Lysate: sc-117752 is available as a Western Blotting negative control lysate derived from non-transfected 293T cells.

SREBP-2 (1C6): sc-13552 is recommended as a positive control antibody for Western Blot analysis of enhanced human SREBP-2 expression in SREBP-2 transfected 293T cells (starting dilution 1:100, dilution range 1:100-1:1,000).

RECOMMENDED SUPPORT REAGENTS

To ensure optimal results, the following support reagents are recommended:
1) Western Blotting: use m-IgGκ BP-HRP: sc-516102 or m-IgGκ BP-HRP (Cruz Marker): sc-516102-CM (dilution range: 1:1000-1:10000), Cruz Marker™ Molecular Weight Standards: sc-2035, UltraCruz® Blocking Reagent: sc-516214 and Western Blotting Luminol Reagent: sc-2048.

DATA



SREBP-2 (1C6): sc-13552. Western blot analysis of SREBP-2 expression in non-transfected: sc-117752 (A) and human SREBP-2 transfected: sc-116625 (B) 293T whole cell lysates.

RESEARCH USE

For research use only, not for use in diagnostic procedures.

PROTOCOLS

See our web site at www.scbt.com for detailed protocols and support products.