



SZABO SCANDIC

Part of Europa Biosite

Produktinformation



Forschungsprodukte & Biochemikalien



Zellkultur & Verbrauchsmaterial



Diagnostik & molekulare Diagnostik



Laborgeräte & Service

Weitere Information auf den folgenden Seiten!
See the following pages for more information!



Lieferung & Zahlungsart

siehe unsere [Liefer- und Versandbedingungen](#)

Zuschläge

- Mindermengenzuschlag
- Trockeneiszuschlag
- Gefahrgutzuschlag
- Expressversand

SZABO-SCANDIC HandelsgmbH

Quellenstraße 110, A-1100 Wien

T. +43(0)1 489 3961-0

F. +43(0)1 489 3961-7

mail@szabo-scandic.com

www.szabo-scandic.com

[linkedin.com/company/szaboscandic](https://www.linkedin.com/company/szaboscandic) 

C1s (h): 293T Lysate: sc-116635

BACKGROUND

The complement component proteins, C1, C3, C4 and C5, are potent anaphylatoxins that are released during complement activation. Binding of these proteins to their respective G protein-coupled receptors induces proinflammatory events, such as cellular degranulation, smooth muscle contraction, arachidonic acid metabolism, cytokine release, leukocyte activation and cellular chemotaxis. C1q, together with proenzymes C1r and C1s, yield C1, the first component of the classical pathway of the serum complement system. C1 consists of a calcium dependent trimolecular complex of C1r, C1s and C1q in a 2:2:1 ratio. Activated C1s is in the form of a disulfide-linked heterodimer consisting of a heavy chain and a light chain. Defects in the gene encoding for C1s can cause selective C1s deficiency, a disorder characterized by early onset of various autoimmune diseases.

REFERENCES

1. Matsumoto, M., et al. 1989. Probing a C4/C4b-binding site on the γ -domain. *J. Immunol.* 142: 2743-2750.
2. Nakagawa, K., et al. 1999. Complement C1s activation in degenerating articular cartilage of rheumatoid arthritis patients: immunohistochemical studies with an active form specific antibody. *Ann. Rheum. Dis.* 58: 175-181.
3. Gaboriaud, C., et al. 2000. Crystal structure of the catalytic domain of human complement C1s: a serine protease with a handle. *EMBO J.* 19: 1755-1765.
4. Dragon-Durey, M.A., et al. 2001. Molecular basis of a selective C1s deficiency associated with early onset multiple autoimmune diseases. *J. Immunol.* 166: 7612-7616.
5. Gregory, L.A., et al. 2003. X-ray structure of the Ca^{2+} -binding interaction domain of C1s. Insights into the assembly of the C1 complex of complement. *J. Biol. Chem.* 278: 32157-32164.
6. Glovsky, M.M., et al. 2004. Complement determinations in human disease. *Ann. Allergy Asthma Immunol.* 93: 513-522.
7. Wouters, D., et al. 2005. Complexes between C1q and C3 or C4: Novel and specific markers for classical complement pathway activation. *J. Immunol. Methods* 298: 35-45.
8. Liu, T., et al. 2005. Human plasma N-glycoproteome analysis by immunofluorescence subtraction, hydrazide chemistry and mass spectrometry. *J. Proteome. Res.* 4: 2070-2080.

CHROMOSOMAL LOCATION

Genetic locus: C1S (human) mapping to 12p13.31.

PRODUCT

C1s (h): 293T Lysate represents a lysate of human C1s transfected 293T cells and is provided as 100 μg protein in 200 μl SDS-PAGE buffer.

STORAGE

Store at -20°C . Repeated freezing and thawing should be minimized. Sample vial should be boiled once prior to use. Non-hazardous. No MSDS required.

APPLICATIONS

C1s (h): 293T Lysate is suitable as a Western Blotting positive control for human reactive C1s antibodies. Recommended use: 10-20 μl per lane.

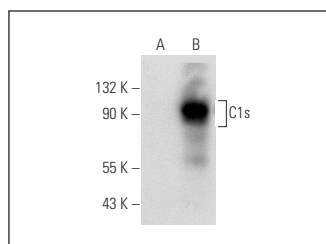
Control 293T Lysate: sc-117752 is available as a Western Blotting negative control lysate derived from non-transfected 293T cells.

C1s (D-6): sc-365273 is recommended as a positive control antibody for Western Blot analysis of enhanced human C1s expression in C1s transfected 293T cells (starting dilution 1:100, dilution range 1:100-1:1,000).

RECOMMENDED SUPPORT REAGENTS

To ensure optimal results, the following support reagents are recommended: 1) Western Blotting: use m-IgG κ BP-HRP: sc-516102 or m-IgG κ BP-HRP (Cruz Marker): sc-516102-CM (dilution range: 1:1000-1:10000), Cruz Marker™ Molecular Weight Standards: sc-2035, UltraCruz® Blocking Reagent: sc-516214 and Western Blotting Luminol Reagent: sc-2048.

DATA



C1s (D-6): sc-365273. Western blot analysis of C1s expression in non-transfected: sc-117752 (A) and human C1s transfected: sc-116635 (B) 293T whole cell lysates.

RESEARCH USE

For research use only, not for use in diagnostic procedures.

PROTOCOLS

See our web site at www.scbt.com for detailed protocols and support products.