



SZABO SCANDIC

Part of Europa Biosite

Produktinformation



Forschungsprodukte & Biochemikalien



Zellkultur & Verbrauchsmaterial



Diagnostik & molekulare Diagnostik



Laborgeräte & Service

Weitere Information auf den folgenden Seiten!
See the following pages for more information!



Lieferung & Zahlungsart

siehe unsere [Liefer- und Versandbedingungen](#)

Zuschläge

- Mindermengenzuschlag
- Trockeneiszuschlag
- Gefahrgutzuschlag
- Expressversand

SZABO-SCANDIC HandelsgmbH

Quellenstraße 110, A-1100 Wien

T. +43(0)1 489 3961-0

F. +43(0)1 489 3961-7

mail@szabo-scandic.com

www.szabo-scandic.com

[linkedin.com/company/szaboscandic](https://www.linkedin.com/company/szaboscandic) 

SO (h): 293T Lysate: sc-116804

BACKGROUND

Sulfite oxidase (SO), a homodimeric protein that localizes to the intermembrane space of mitochondria, catalyzes the oxidation of sulfite to sulfate, the terminal reaction in the oxidative degradation of the sulfur amino acids cysteine and methionine. Genetic deficiency of SO contributes to neurological abnormalities and often leads to death at an early age. Mutation of Arginine 160 in humans decreases the intramolecular electron transfer (IET) rate, which contributes to the fatality of this genetic disorder. Also, the Tyrosine 343 residue in humans plays an important role in both substrate binding and oxidation of sulfite by SO. The human SO gene maps to chromosome 12, and shows high expression in liver, kidney, skeletal muscle, heart, placenta and brain.

REFERENCES

1. Kisker, C., et al. 1997. Molecular basis of sulfite oxidase deficiency from the structure of sulfite oxidase. *Cell* 91: 973-983.
2. Garrett, R.M., et al. 1998. Human sulfite oxidase R160Q: identification of the mutation in a sulfite oxidase-deficient patient and expression and characterization of the mutant enzyme. *Proc. Natl. Acad. Sci. USA* 95: 6394-6398.
3. Online Mendelian Inheritance in Man, OMIM™. 2002. Johns Hopkins University, Baltimore, MD. MIM Number: 606887. World Wide Web URL: <http://www.ncbi.nlm.nih.gov/omim/>
4. Feng, C., et al. 2003. Essential role of conserved arginine 160 in intramolecular electron transfer in human sulfite oxidase. *Biochemistry* 42: 12235-12242.
5. Sass, J.O., et al. 2004. New approaches towards laboratory diagnosis of isolated sulphite oxidase deficiency. *Ann. Clin. Biochem.* 41: 157-159.
6. Wilson, H.L., et al. 2004. The role of Tyrosine 343 in substrate binding and catalysis by human sulfite oxidase. *J. Biol. Chem.* 279: 15105-15113.
7. Nimet Izzut-Uysal, V., et al. 2005. Effect of sulfite on macrophage functions of normal and sulfite oxidase-deficient rats. *Food Chem. Toxicol.* 43: 599-605.
8. Kucukatay, V., et al. 2005. Effect of sulfite on cognitive function in normal and sulfite oxidase deficient rats. *Neurotoxicol. Teratol.* 27: 47-54.

CHROMOSOMAL LOCATION

Genetic locus: SUOX (human) mapping to 12q13.2.

PRODUCT

SO (h): 293T Lysate represents a lysate of human SO transfected 293T cells and is provided as 100 µg protein in 200 µl SDS-PAGE buffer.

STORAGE

Store at -20° C. Repeated freezing and thawing should be minimized. Sample vial should be boiled once prior to use. Non-hazardous. No MSDS required.

PROTOCOLS

See our web site at www.scbt.com for detailed protocols and support products.

APPLICATIONS

SO (h): 293T Lysate is suitable as a Western Blotting positive control for human reactive SO antibodies. Recommended use: 10-20 µl per lane.

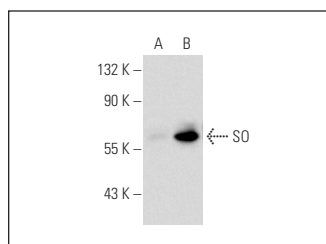
Control 293T Lysate: sc-117752 is available as a Western Blotting negative control lysate derived from non-transfected 293T cells.

SO (QQ-8): sc-100866 is recommended as a positive control antibody for Western Blot analysis of enhanced human SO expression in SO transfected 293T cells (starting dilution 1:100, dilution range 1:100-1:1,000).

RECOMMENDED SUPPORT REAGENTS

To ensure optimal results, the following support reagents are recommended:
 1) Western Blotting: use m-IgGκ BP-HRP: sc-516102 or m-IgGκ BP-HRP (Cruz Marker): sc-516102-CM (dilution range: 1:1000-1:10000), Cruz Marker™ Molecular Weight Standards: sc-2035, UltraCruz® Blocking Reagent: sc-516214 and Western Blotting Luminol Reagent: sc-2048.

DATA



SO (QQ-8): sc-100866. Western blot analysis of SO expression in non-transfected: sc-117752 (A) and human SO transfected: sc-116804 (B) 293T whole cell lysates.

RESEARCH USE

For research use only, not for use in diagnostic procedures.