



SZABO SCANDIC

Part of Europa Biosite

Produktinformation



Forschungsprodukte & Biochemikalien



Zellkultur & Verbrauchsmaterial



Diagnostik & molekulare Diagnostik



Laborgeräte & Service

Weitere Information auf den folgenden Seiten!
See the following pages for more information!



Lieferung & Zahlungsart

siehe unsere [Liefer- und Versandbedingungen](#)

Zuschläge

- Mindermengenzuschlag
- Trockeneiszuschlag
- Gefahrgutzuschlag
- Expressversand

SZABO-SCANDIC HandelsgmbH

Quellenstraße 110, A-1100 Wien

T. +43(0)1 489 3961-0

F. +43(0)1 489 3961-7

mail@szabo-scandic.com

www.szabo-scandic.com

[linkedin.com/company/szaboscandic](https://www.linkedin.com/company/szaboscandic) 

SCML2 (h): 293T Lysate: sc-116915

BACKGROUND

In *Drosophila*, the Polycomb (PcG) gene family encodes chromatin proteins that are required for the repression of homeotic loci in embryonic development. PcG proteins work in conjunction with the trithorax-group (trxG), which activate homeobox gene expression during embryonic development. SCM (sex comb on midleg) is an important *Drosophila* PcG protein involved in transcriptional repression. SCML2 (sex comb on midleg-like 2) is a human homolog of this *Drosophila* protein. SCML2 is a ubiquitously expressed protein with predominant expression in placenta, testis and thymus. Upon DNA damage, SCML2 may be phosphorylated by ATR or ATM. Due to alternative splicing, two isoforms exist for this protein.

REFERENCES

- Montini, E., Buchner, G., Spalluto, C., Andolfi, G., Caruso, A., den Dunnen, J.T., Trump, D., Rocchi, M., Ballabio, A. and Franco, B. 1999. Identification of SCML2, a second human gene homologous to the *Drosophila* sex comb on midleg (Scm): A new gene cluster on Xp22. *Genomics* 58: 65-72.
- Tomotsune, D., Takihara, Y., Berger, J., Duhl, D., Joo, S., Kyba, M., Shirai, M., Ohta, H., Matsuda, Y., Honda, B.M., Simon, J., Shimada, K., Brock, H.W. and Randazzo, F. 2000. A novel member of murine Polycomb-group proteins, Sex comb on midleg homolog protein, is highly conserved, and interacts with RAE28/mp1 *in vitro*. *Differentiation* 65: 229-239.
- Toutain, A., Dessay, B., Ronce, N., Ferrante, M.I., Tranchemontagne, J., Newbury-Ecob, R., Wallgren-Pettersson, C., Burn, J., Kaplan, J., Rossi, A., Russo, S., Walpole, I., Hartsfield, J.K., Oyen, N., Nemeth, A., Bitoun, P., Trump, D., Moraine, C. and Franco, B. 2002. Refinement of the NHS locus on chromosome Xp22.13 and analysis of five candidate genes. *Eur. J. Hum. Genet.* 10: 516-520.
- Sathyamurthy, A., Allen, M.D., Murzin, A.G. and Bycroft, M. 2003. Crystal structure of the malignant brain tumor (MBT) repeats in Sex Comb on Midleg-like 2 (SCML2). *J. Biol. Chem.* 278: 46968-46973.
- Peterson, A.J., Mallin, D.R., Francis, N.J., Ketel, C.S., Stamm, J., Voeller, R.K., Kingston, R.E. and Simon, J.A. 2004. Requirement for sex comb on midleg protein interactions in *Drosophila* polycomb group repression. *Genetics* 167: 1225-1239.
- Kim, C.A., Sawaya, M.R., Cascio, D., Kim, W. and Bowie, J.U. 2005. Structural organization of a Sex-comb-on-midleg/polyhomeotic copolymer. *J. Biol. Chem.* 280: 27769-27775.

CHROMOSOMAL LOCATION

Genetic locus: SCML2 (human) mapping to Xp22.13.

PRODUCT

SCML2 (h): 293T Lysate represents a lysate of human SCML2 transfected 293T cells and is provided as 100 µg protein in 200 µl SDS-PAGE buffer.

STORAGE

Store at -20° C. Repeated freezing and thawing should be minimized. Sample vial should be boiled once prior to use. Non-hazardous. No MSDS required.

APPLICATIONS

SCML2 (h): 293T Lysate is suitable as a Western Blotting positive control for human reactive SCML2 antibodies. Recommended use: 10-20 µl per lane.

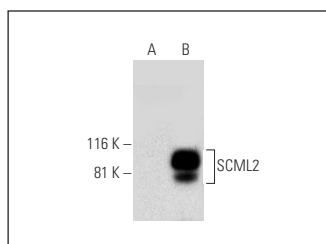
Control 293T Lysate: sc-117752 is available as a Western Blotting negative control lysate derived from non-transfected 293T cells.

SCML2 (C-12): sc-393243 is recommended as a positive control antibody for Western Blot analysis of enhanced human SCML2 expression in SCML2 transfected 293T cells (starting dilution 1:100, dilution range 1:100-1:1,000).

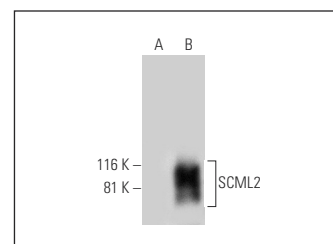
RECOMMENDED SUPPORT REAGENTS

To ensure optimal results, the following support reagents are recommended:
 1) Western Blotting: use m-IgGκ BP-HRP: sc-516102 or m-IgGκ BP-HRP (Cruz Marker): sc-516102-CM (dilution range: 1:1000-1:10000), Cruz Marker™ Molecular Weight Standards: sc-2035, UltraCruz® Blocking Reagent: sc-516214 and Western Blotting Luminol Reagent: sc-2048.

DATA



SCML2 (C-12): sc-393243. Western blot analysis of SCML2 expression in non-transfected: sc-117752 (A) and human SCML2 transfected: sc-116915 (B) 293T whole cell lysates.



SCML2 (H-3): sc-393265. Western blot analysis of SCML2 expression in non-transfected: sc-117752 (A) and human SCML2 transfected: sc-116915 (B) 293T whole cell lysates.

RESEARCH USE

For research use only, not for use in diagnostic procedures.

PROTOCOLS

See our web site at www.scbt.com for detailed protocols and support products.