



# SZABO SCANDIC

Part of Europa Biosite

## Produktinformation



Forschungsprodukte & Biochemikalien



Zellkultur & Verbrauchsmaterial



Diagnostik & molekulare Diagnostik



Laborgeräte & Service

Weitere Information auf den folgenden Seiten!  
See the following pages for more information!



### Lieferung & Zahlungsart

siehe unsere [Liefer- und Versandbedingungen](#)

### Zuschläge

- Mindermengenzuschlag
- Trockeneiszuschlag
- Gefahrgutzuschlag
- Expressversand

### SZABO-SCANDIC HandelsgmbH

Quellenstraße 110, A-1100 Wien

T. +43(0)1 489 3961-0

F. +43(0)1 489 3961-7

[mail@szabo-scandic.com](mailto:mail@szabo-scandic.com)

[www.szabo-scandic.com](http://www.szabo-scandic.com)

[linkedin.com/company/szaboscandic](https://www.linkedin.com/company/szaboscandic) 

# LLGL2 (h): 293T Lysate: sc-116924

## BACKGROUND

LLGL2 (lethal giant larvae homolog 2), also referred to as HGL or LGL2, is a cortical cytoskeleton protein that is a part of a larger complex of proteins. The complex, which consists of LGN, PKC  $\iota$  and PAR-6 $\beta$ , may play a role in ensuring the correct organization and orientation of bipolar spindles for normal cell division and for the initial phase of the establishment of epithelial cell polarity. In *Drosophila melanogaster*, LLGL2 is required in follicle cells for the differentiation of both stalk cells and posterior follicle cells. In humans, LLGL2 may be involved in cell proliferation control and tumorigenesis. Phosphorylation of LLGL2 is induced during cell polarization and may contribute to the segregation of LLGL2 from the PKC  $\iota$  and PAR-6 $\beta$  complex. Overexpression of LLGL2 is thought to inhibit tight junction formation in cells. LLGL2 is expressed in the cytoplasm and localizes to the perinuclear structure of the cell.

## REFERENCES

- Musch, A., Cohen, D., Yeaman, C., Nelson, W.J., Rodriguez-Boulan, E. and Brennwald, P.J. 2002. Mammalian homolog of *Drosophila* tumor suppressor lethal (2) giant larvae interacts with basolateral exocytic machinery in Madin-Darby canine kidney cells. *Mol. Biol. Cell* 13: 158-168.
- Chalmers, A.D., Pambos, M., Mason, J., Lang, S., Wylie, C. and Papalopulu, N. 2005. aPKC, Crumbs3 and Lgl2 control apicobasal polarity in early vertebrate development. *Development* 132: 977-986.
- Yasumi, M., Sakisaka, T., Hoshino, T., Kimura, T., Sakamoto, Y., Yamanaka, T., Ohno, S. and Takai, Y. 2005. Direct binding of Lgl2 to LGN during mitosis and its requirement for normal cell division. *J. Biol. Chem.* 280: 6761-6765.
- Kallay, L.M., McNickle, A., Brennwald, P.J., Hubbard, A.L. and Braiterman, L.T. 2006. Scribble associates with two polarity proteins, Lgl2 and Vangl2, via distinct molecular domains. *J. Cell. Biochem.* 99: 647-664.
- Kuphal, S., Wallner, S., Schimanski, C.C., Bataille, F., Hofer, P., Strand, S., Strand, D. and Bosserhoff, A.K. 2006. Expression of Hgl-1 is strongly reduced in malignant melanoma. *Oncogene* 25: 103-110.
- Bialucha, C.U., Ferber, E.C., Pichaud, F., Peak-Chew, S.Y. and Fujita, Y. 2007. p32 is a novel mammalian Lgl binding protein that enhances the activity of protein kinase C  $\zeta$  and regulates cell polarity. *J. Cell Biol.* 178: 575-581.
- Zimmermann, T., Kashyap, A., Hartmann, U., Otto, G., Galle, P.R., Strand, S. and Strand, D. 2008. Cloning and characterization of the promoter of Hgl-2, the human homologue of *Drosophila* lethal giant larvae (lgl) polarity gene. *Biochem. Biophys. Res. Commun.* 366: 1067-1073.

## CHROMOSOMAL LOCATION

Genetic locus: LLGL2 (human) mapping to 17q25.1.

## PRODUCT

LLGL2 (h): 293T Lysate represents a lysate of human LLGL2 transfected 293T cells and is provided as 100  $\mu$ g protein in 200  $\mu$ l SDS-PAGE buffer.

## APPLICATIONS

LLGL2 (h): 293T Lysate is suitable as a Western Blotting positive control for human reactive LLGL2 antibodies. Recommended use: 10-20  $\mu$ l per lane.

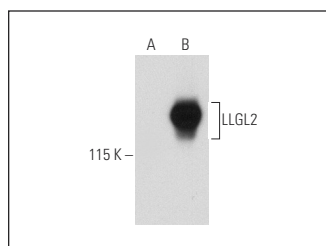
Control 293T Lysate: sc-117752 is available as a Western Blotting negative control lysate derived from non-transfected 293T cells.

LLGL2 (I-13): sc-101242 is recommended as a positive control antibody for Western Blot analysis of enhanced human LLGL2 expression in LLGL2 transfected 293T cells (starting dilution 1:100, dilution range 1:100-1:1,000).

## RECOMMENDED SUPPORT REAGENTS

To ensure optimal results, the following support reagents are recommended:  
 1) Western Blotting: use m-IgG $\kappa$  BP-HRP: sc-516102 or m-IgG $\kappa$  BP-HRP (Cruz Marker): sc-516102-CM (dilution range: 1:1000-1:10000), Cruz Marker™ Molecular Weight Standards: sc-2035, UltraCruz® Blocking Reagent: sc-516214 and Western Blotting Luminol Reagent: sc-2048.

## DATA



LLGL2 (I-13): sc-101242. Western blot analysis of LLGL2 expression in non-transfected: sc-117752 (A) and human LLGL2 transfected: sc-116924 (B) 293T whole cell lysates.

## STORAGE

Store at -20° C. Repeated freezing and thawing should be minimized. Sample vial should be boiled once prior to use. Non-hazardous. No MSDS required.

## RESEARCH USE

For research use only, not for use in diagnostic procedures.

## PROTOCOLS

See our web site at [www.scbt.com](http://www.scbt.com) for detailed protocols and support products.