



SZABO SCANDIC

Part of Europa Biosite

Produktinformation



Forschungsprodukte & Biochemikalien



Zellkultur & Verbrauchsmaterial



Diagnostik & molekulare Diagnostik



Laborgeräte & Service

Weitere Information auf den folgenden Seiten!
See the following pages for more information!



Lieferung & Zahlungsart

siehe unsere [Liefer- und Versandbedingungen](#)

Zuschläge

- Mindermengenzuschlag
- Trockeneiszuschlag
- Gefahrgutzuschlag
- Expressversand

SZABO-SCANDIC HandelsgmbH

Quellenstraße 110, A-1100 Wien

T. +43(0)1 489 3961-0

F. +43(0)1 489 3961-7

mail@szabo-scandic.com

www.szabo-scandic.com

[linkedin.com/company/szaboscandic](https://www.linkedin.com/company/szaboscandic) 

CD24 (h): 293T Lysate: sc-116926

BACKGROUND

CD24 is a GPI-linked membrane sialoglycoprotein that is expressed on pro-B, pre-B and mature B cells, and its expression is decreased after B cell activation. CD24 is also found on granulocytes and a small fraction of thymocytes and neuroblastomas, but not on plasma cells. CD24 may play a role in the regulation of B cell proliferation and differentiation. CD24 is expressed in hematological malignancies as well as in a large variety of solid tumors. A shift from apical localization to cytoplasmic staining of CD24 is a surrogate marker of stromal invasion in ovarian serous tumors of borderline malignancy. CD24 protein can be a B cell differentiation marker that is expressed on mature resting B cells and disappears upon stimulation.

REFERENCES

1. Kemshead, J.T., Fritschy, J., Asser, U., Sutherland, R. and Greaves, M.F. 1982. Monoclonal antibodies defining markers with apparent selectivity for particular haemopoietic cell types may also detect antigens on cells of neural crest origin. *Hybridoma* 1: 109-123.
2. Hsu, S.M. and Jaffe, E.S. 1984. Phenotypic expression of B lymphocytes. Identification with monoclonal antibodies in normal lymphoid tissues. *Am. J. Pathol.* 114: 387-395.
3. Fischer, G.F., Majdic, O., Gadd, S. and Knapp, W. 1990. Signal transduction in lymphocytic and myeloid cells via CD24, a new member of phosphoinositol-anchored membrane molecules. *J. Immunol.* 144: 638-641.
4. Kay, R., Rosten, P.M. and Humphries, R.K. 1991. CD24, a signal transducer modulation B cell activation responses, is a very short peptide with a glycosyl phosphatidylinositol membrane anchor. *J. Immunol.* 147: 1412-1416.
5. Jackson, D., Waibel, R., Weber, E., Bell, J. and Stahel, R.A. 1992. CD24, a signal-transducing molecule expressed on human B cells, is a major surface antigen on small cell lung carcinomas. *Cancer Res.* 52: 5264-5270.
6. Hubbe, M. and Altevogt, P. 1994. Heat-stable antigen/CD24 on mouse T lymphocytes: evidence for a costimulatory function. *Eur. J. Immunol.* 24: 731-737.
7. Williams, L.A., McLellan, A.D., Summers, K.L., Sorg, R.V., Fearnley, D.B. and Hart, D.N. 1996. Identification of a novel dendritic cell surface antigen defined by carbohydrate specific CD24 antibody cross-reactivity. *Immunology* 89: 120-125.
8. Fogel, M., Friederichs, J., Zeller, Y., Husar, M., Smirnov, A., Roitman, L., Altevogt, P. and Sthoeger, Z.M. 1999. CD24 is a marker for human breast carcinoma. *Cancer Lett.* 143: 87-94.
9. Suzuki, T., Kiyokawa, N., Taguchi, T., Sekino, T., Katagiri, Y.U. and Fujimoto, J. 2001. CD24 induces apoptosis in human B cells via the glycolipid-enriched membrane domains/rafts-mediated signaling system. *J. Immunol.* 166: 5567-5577.

CHROMOSOMAL LOCATION

Genetic locus: CD24 (human) mapping to 6p25.3.

RESEARCH USE

For research use only, not for use in diagnostic procedures.

PRODUCT

CD24 (h): 293T Lysate represents a lysate of human CD24 transfected 293T cells and is provided as 100 µg protein in 200 µl SDS-PAGE buffer.

APPLICATIONS

CD24 (h): 293T Lysate is suitable as a Western Blotting positive control for human reactive CD24 antibodies. Recommended use: 10-20 µl per lane.

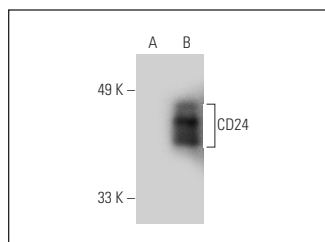
Control 293T Lysate: sc-117752 is available as a Western Blotting negative control lysate derived from non-transfected 293T cells.

CD24 (3H1143): sc-70600 is recommended as a positive control antibody for Western Blot analysis of enhanced human CD24 expression in CD24 transfected 293T cells (starting dilution 1:100, dilution range 1:100-1:1,000).

RECOMMENDED SUPPORT REAGENTS

To ensure optimal results, the following support reagents are recommended: 1) Western Blotting: use m-IgGκ BP-HRP: sc-516102 or m-IgGκ BP-HRP (Cruz Marker): sc-516102-CM (dilution range: 1:1000-1:10000), Cruz Marker™ Molecular Weight Standards: sc-2035, UltraCruz® Blocking Reagent: sc-516214 and Western Blotting Luminol Reagent: sc-2048.

DATA



CD24 (3H1143): sc-70600. Western blot analysis of CD24 expression in non-transfected: sc-117752 (A) and human CD24 transfected: sc-116926 (B) 293T whole cell lysates.

STORAGE

Store at -20° C. Repeated freezing and thawing should be minimized. Sample vial should be boiled once prior to use. Non-hazardous. No MSDS required.

PROTOCOLS

See our web site at www.scbt.com for detailed protocols and support products.