



SZABO SCANDIC

Part of Europa Biosite

Produktinformation



Forschungsprodukte & Biochemikalien



Zellkultur & Verbrauchsmaterial



Diagnostik & molekulare Diagnostik



Laborgeräte & Service

Weitere Information auf den folgenden Seiten!
See the following pages for more information!



Lieferung & Zahlungsart

siehe unsere [Liefer- und Versandbedingungen](#)

Zuschläge

- Mindermengenzuschlag
- Trockeneiszuschlag
- Gefahrgutzuschlag
- Expressversand

SZABO-SCANDIC HandelsgmbH

Quellenstraße 110, A-1100 Wien

T. +43(0)1 489 3961-0

F. +43(0)1 489 3961-7

mail@szabo-scandic.com

www.szabo-scandic.com

[linkedin.com/company/szaboscandic](https://www.linkedin.com/company/szaboscandic) 

Barx1 (h): 293T Lysate: sc-116949

BACKGROUND

The BAR homeobox (Barx) family of proteins comprise Barx1 and Barx2. These proteins are regulators of place-dependent morphogenesis and play important roles in controlling the expression patterns of cell adhesion molecules. Barx1, a 226 amino acid nuclear protein, is expressed primarily in testis, heart and craniofacial tissue. Barx1 is a homeodomain transcription factor important in odontogenesis, craniofacial development and stomach organogenesis. Barx1 controls mesenchymal cell expression of two secreted Wnt antagonists, sFRP-1 and sFRP2, proteins that are important in the development of the gastric endoderm which occurs before the epithelial differentiation. During early stages of molar development, Barx1 directs the undetermined ectomesenchymal cells in the proximal region of the jaws to follow the pathway of multicuspoid tooth development. Fibroblast growth factor-8 (FGF8) stimulates Barx1 expression, while bone morphogenetic protein-4 (BMP4) inhibits Barx1 expression.

REFERENCES

1. Tissier-Seta, J.P., Mucchielli, M.L., Mark, M., Mattei, M.G., Goridis, C. and Brunet, J.F. 1995. Barx1, a new mouse ectomesenchyme and the stomach. *Mech. Dev.* 51: 3-15.
2. Mitsiadis, T.A., Mucchielli, M.L., Raffo, S., Proust, J.P., Koopman, P. and Goridis, C. 1998. Expression of the transcription factors Otx2, Barx1 and Sox9 during mouse odontogenesis. *Eur. J. Oral Sci.* 106: 112-116.
3. Gould, D.B. and Walter, M.A. 2000. Cloning, characterization, localization, and mutational screening of the human Barx1 gene. *Genomics* 68: 336-342.
4. Online Mendelian Inheritance in Man, OMIM™. 2002. Johns Hopkins University, Baltimore, MD. MIM Number: 603260. World Wide Web URL: <http://www.ncbi.nlm.nih.gov/omim/>
5. Gould, D.B. and Walter, M.A. 2004. Mutational analysis of Barh1 and Barx1 in three new patients with Joubert syndrome. *Am. J. Med. Genet.* 131: 205-208.
6. Sander, G.R. and Powell, B.C. 2004. Expression of the homeobox gene Barx2 in the gut. *J. Histochem. Cytochem.* 52: 541-544.
7. Kim, B.M., Buchner, G., Miletich, I., Sharpe, P.T. and Shivdasani, R.A. 2005. The stomach mesenchymal transcription factor Barx1 specifies gastric epithelial identity through inhibition of transient Wnt signaling. *Dev. Cell* 8: 611-622.
8. Offner, N., Duval, N., Jamrich, M. and Durand, B. 2005. The pro-apoptotic activity of a vertebrate Bar-like homeobox gene plays a key role in patterning the *Xenopus* neural plate by limiting the number of chordin- and Shh-expressing cells. *Development* 132: 1807-1818.
9. Miletich, I., Buchner, G. and Sharpe, P.T. 2005. Barx1 and evolutionary changes in feeding. *J. Anat.* 207: 619-622.

CHROMOSOMAL LOCATION

Genetic locus: BARX1 (human) mapping to 9q22.32.

PRODUCT

Barx1 (h): 293T Lysate represents a lysate of human Barx1 transfected 293T cells and is provided as 100 µg protein in 200 µl SDS-PAGE buffer.

APPLICATIONS

Barx1 (h): 293T Lysate is suitable as a Western Blotting positive control for human reactive Barx1 antibodies. Recommended use: 10-20 µl per lane.

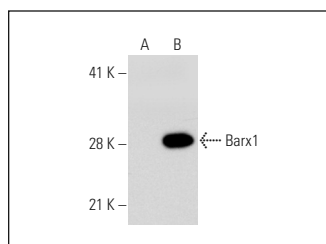
Control 293T Lysate: sc-117752 is available as a Western Blotting negative control lysate derived from non-transfected 293T cells.

Barx1 (392.8): sc-81956 is recommended as a positive control antibody for Western Blot analysis of enhanced human Barx1 expression in Barx1 transfected 293T cells (starting dilution 1:100, dilution range 1:100-1:1,000).

RECOMMENDED SUPPORT REAGENTS

To ensure optimal results, the following support reagents are recommended:
 1) Western Blotting: use m-IgGκ BP-HRP: sc-516102 or m-IgGκ BP-HRP (Cruz Marker): sc-516102-CM (dilution range: 1:1000-1:10000), Cruz Marker™ Molecular Weight Standards: sc-2035, UltraCruz® Blocking Reagent: sc-516214 and Western Blotting Luminol Reagent: sc-2048.

DATA



Barx1 (392.8): sc-81956. Western blot analysis of Barx1 expression in non-transfected: sc-117752 (A) and human Barx1 transfected: sc-116949 (B) 293T whole cell lysates.

STORAGE

Store at -20° C. Repeated freezing and thawing should be minimized. Sample vial should be boiled once prior to use. Non-hazardous. No MSDS required.

RESEARCH USE

For research use only, not for use in diagnostic procedures.

PROTOCOLS

See our web site at www.scbt.com for detailed protocols and support products.