



# SZABO SCANDIC

Part of Europa Biosite

## Produktinformation



Forschungsprodukte & Biochemikalien



Zellkultur & Verbrauchsmaterial



Diagnostik & molekulare Diagnostik



Laborgeräte & Service

Weitere Information auf den folgenden Seiten!  
See the following pages for more information!



### Lieferung & Zahlungsart

siehe unsere [Liefer- und Versandbedingungen](#)

### Zuschläge

- Mindermengenzuschlag
- Trockeneiszuschlag
- Gefahrgutzuschlag
- Expressversand

### SZABO-SCANDIC HandelsgmbH

Quellenstraße 110, A-1100 Wien

T. +43(0)1 489 3961-0

F. +43(0)1 489 3961-7

[mail@szabo-scandic.com](mailto:mail@szabo-scandic.com)

[www.szabo-scandic.com](http://www.szabo-scandic.com)

[linkedin.com/company/szaboscandic](https://www.linkedin.com/company/szaboscandic) 

# C11orf61 (h): 293T Lysate: sc-116988

## BACKGROUND

C11orf61 (chromosome 11 open reading frame 61), also known as FLJ23342, is a 559 amino acid protein that exists as 3 alternatively spliced isoforms and is encoded by a gene located on human chromosome 11. With approximately 135 million base pairs and 1,400 genes, chromosome 11 makes up around 4% of human genomic DNA and is considered a gene and disease association dense chromosome. The chromosome 11 encoded Atm gene is important for regulation of cell cycle arrest and apoptosis following double strand DNA breaks. Atm mutation leads to the disorder known as ataxia-telangiectasia. The blood disorders Sickle cell anemia and  $\beta$  thalassemia are caused by HBB gene mutations. Wilms' tumors, WAGR syndrome and Denys-Drash syndrome are associated with mutations of the WT1 gene. Jervell and Lange-Nielsen syndrome, Jacobsen syndrome, Niemann-Pick disease, hereditary angioedema and Smith-Lemli-Opitz syndrome are also associated with defects in chromosome 11.

## REFERENCES

- Grossfeld, P.D., Mattina, T., Lai, Z., Favier, R., Jones, K.L., Cotter, F. and Jones, C. 2004. The 11q terminal deletion disorder: a prospective study of 110 cases. *Am. J. Med. Genet. A* 129: 51-61.
- Loussouarn, G., Baró, I. and Escande, D. 2006. KCNQ1 K<sup>+</sup> channel-mediated cardiac channelopathies. *Methods Mol. Biol.* 337: 167-183.
- Taylor, T.D., Noguchi, H., Totoki, Y., Toyoda, A., Kuroki, Y., Dewar, K., Lloyd, C., Itoh, T., Takeda, T., Kim, D.W., She, X., Barlow, K.F., Bloom, T., Bruford, E., Chang, J.L., Cuomo, C.A., Eichler, E., Fitzgerald, M.G., Jaffe, D.B., LaButti, K., Nicol, R., Park, H.S., et al. 2006. Human chromosome 11 DNA sequence and analysis including novel gene identification. *Nature* 440: 497-500.
- Zehelein, J., Kathoefer, S., Khalil, M., Alter, M., Thomas, D., Brockmeier, K., Ulmer, H.E., Katus, H.A. and Koenen, M. 2006. Skipping of Exon 1 in the KCNQ1 gene causes Jervell and Lange-Nielsen syndrome. *J. Biol. Chem.* 281: 35397-35403.
- Ataga, K.I., Cappellini, M.D. and Rachmilewitz, E.A. 2007.  $\beta$ -thalassaemia and sickle cell anaemia as paradigms of hypercoagulability. *Br. J. Haematol.* 139: 3-13.
- Berger, A.C., Salazar, G., Styers, M.L., Newell-Litwa, K.A., Werner, E., Maue, R.A., Corbett, A.H. and Faundez, V. 2007. The subcellular localization of the Niemann-Pick Type C proteins depends on the adaptor complex AP-3. *J. Cell Sci.* 120: 3640-3652.
- Lee, J.H. and Paull, T.T. 2007. Activation and regulation of ATM kinase activity in response to DNA double-strand breaks. *Oncogene* 26: 7741-7748.
- O'Connor, M.J., Martin, N.M. and Smith, G.C. 2007. Targeted cancer therapies based on the inhibition of DNA strand break repair. *Oncogene* 26: 7816-7824.
- Kaste, S.C., Dome, J.S., Babyn, P.S., Graf, N.M., Grundy, P., Godzinski, J., Levitt, G.A. and Jenkinson, H. 2008. Wilms tumour: prognostic factors, staging, therapy and late effects. *Pediatr. Radiol.* 38: 2-17.

## CHROMOSOMAL LOCATION

Genetic locus: MSANTD2 (human) mapping to 11q24.2.

## PRODUCT

C11orf61 (h): 293T Lysate represents a lysate of human C11orf61 transfected 293T cells and is provided as 100  $\mu$ g protein in 200  $\mu$ l SDS-PAGE buffer.

## APPLICATIONS

C11orf61 (h): 293T Lysate is suitable as a Western Blotting positive control for human reactive C11orf61 antibodies. Recommended use: 10-20  $\mu$ l per lane.

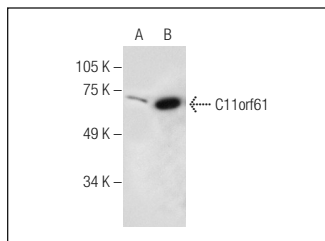
Control 293T Lysate: sc-117752 is available as a Western Blotting negative control lysate derived from non-transfected 293T cells.

C11orf61 (B-8): sc-390361 is recommended as a positive control antibody for Western Blot analysis of enhanced human C11orf61 expression in C11orf61 transfected 293T cells (starting dilution 1:100, dilution range 1:100-1:1,000).

## RECOMMENDED SUPPORT REAGENTS

To ensure optimal results, the following support reagents are recommended:  
 1) Western Blotting: use m-IgG $\kappa$  BP-HRP: sc-516102 or m-IgG $\kappa$  BP-HRP (Cruz Marker): sc-516102-CM (dilution range: 1:1000-1:10000), Cruz Marker™ Molecular Weight Standards: sc-2035, UltraCruz® Blocking Reagent: sc-516214 and Western Blotting Luminol Reagent: sc-2048.

## DATA



C11orf61 (B-8): sc-390361. Western blot analysis of C11orf61 expression in non-transfected: sc-117752 (A) and human C11orf61 transfected: sc-116988 (B) 293T whole cell lysates.

## STORAGE

Store at -20° C. Repeated freezing and thawing should be minimized. Sample vial should be boiled once prior to use. Non-hazardous. No MSDS required.

## RESEARCH USE

For research use only, not for use in diagnostic procedures.

## PROTOCOLS

See our web site at [www.scbt.com](http://www.scbt.com) for detailed protocols and support products.