



SZABO SCANDIC

Part of Europa Biosite

Produktinformation



Forschungsprodukte & Biochemikalien



Zellkultur & Verbrauchsmaterial



Diagnostik & molekulare Diagnostik



Laborgeräte & Service

Weitere Information auf den folgenden Seiten!
See the following pages for more information!



Lieferung & Zahlungsart

siehe unsere [Liefer- und Versandbedingungen](#)

Zuschläge

- Mindermengenzuschlag
- Trockeneiszuschlag
- Gefahrgutzuschlag
- Expressversand

SZABO-SCANDIC HandelsgmbH

Quellenstraße 110, A-1100 Wien

T. +43(0)1 489 3961-0

F. +43(0)1 489 3961-7

mail@szabo-scandic.com

www.szabo-scandic.com

[linkedin.com/company/szaboscandic](https://www.linkedin.com/company/szaboscandic) 

copine 3 (h): 293T Lysate: sc-117061

BACKGROUND

Copine 3, also known as CPNE3, CPN3 or COPN3, is a member of the copine family of evolutionarily conserved, soluble, calcium-dependent, membrane-binding proteins. Members of the copine family are involved in signal transduction and membrane trafficking. Copine 3 is ubiquitously expressed and contains two N-terminal C2 domains and one C-terminal VWFA (von Willebrand factor A) domain, which is also referred to as the A domain or the core domain. As is characteristic of the copine family, copine 3 functions in membrane trafficking and is capable of binding phospholipids in a calcium-dependent manner. Differing from other members of the copine family, copine 3 may possess some intrinsic kinase activity. Copine 3 exists as a monomer in the cytosol and undergoes a conformational change upon binding to calcium.

REFERENCES

- Creutz, C.E., Tomsig, J.L., Snyder, S.L., Gautier, M.C., Skouri, F., Beisson, J. and Cohen, J. 1998. The copines, a novel class of C2 domain-containing, calcium-dependent, phospholipid-binding proteins conserved from *Paramecium* to humans. *J. Biol. Chem.* 273: 1393-1402.
- Caudell, E.G., Caudell, J.J., Tang, C.H., Yu, T.K., Frederick, M.J. and Grimm, E.A. 2000. Characterization of human copine 3 as a phosphoprotein with associated kinase activity. *Biochemistry* 39: 13034-13043.
- Tomsig, J.L. and Creutz, C.E. 2000. Biochemical characterization of copine: a ubiquitous Ca^{2+} -dependent, phospholipid-binding protein. *Biochemistry* 39: 16163-16175.
- Tomsig, J.L. and Creutz, C.E. 2002. Copines: a ubiquitous family of Ca^{2+} -dependent phospholipid-binding proteins. *Cell. Mol. Life Sci.* 59: 1467-1477.
- Tomsig, J.L., Snyder, S.L. and Creutz, C.E. 2003. Identification of targets for calcium signaling through the copine family of proteins. Characterization of a coiled-coil copine-binding motif. *J. Biol. Chem.* 278: 10048-10054.
- Cowland, J.B., Carter, D., Bjerregaard, M.D., Johnsen, A.H., Borregaard, N. and Lollike, K. 2003. Tissue expression of copines and isolation of copines 1 and 3 from the cytosol of human neutrophils. *J. Leukoc. Biol.* 74: 379-388.
- Thomas, G., Jacobs, K.B., Yeager, M., Kraft, P., Wacholder, S., Orr, N., Yu, K., Chatterjee, N., Welch, R., Hutchinson, A., Crenshaw, A., Cancel-Tassin, G., Staats, B.J., Wang, Z., Gonzalez-Bosquet, J., Fang, J., Deng, X., et al. 2008. Multiple loci identified in a genome-wide association study of prostate cancer. *Nat. Genet.* 40: 310-315.

CHROMOSOMAL LOCATION

Genetic locus: CPNE3 (human) mapping to 8q21.3.

PRODUCT

copine 3 (h): 293T Lysate represents a lysate of human copine 3 transfected 293T cells and is provided as 100 µg protein in 200 µl SDS-PAGE buffer.

STORAGE

Store at -20° C. Repeated freezing and thawing should be minimized. Sample vial should be boiled once prior to use. Non-hazardous. No MSDS required.

APPLICATIONS

copine 3 (h): 293T Lysate is suitable as a Western Blotting positive control for human reactive copine 3 antibodies. Recommended use: 10-20 µl per lane.

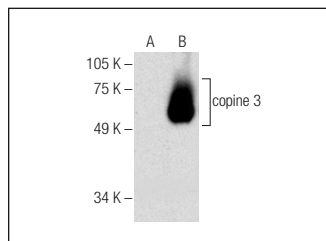
Control 293T Lysate: sc-117752 is available as a Western Blotting negative control lysate derived from non-transfected 293T cells.

copine 3 (C-7): sc-390143 is recommended as a positive control antibody for Western Blot analysis of enhanced human copine 3 expression in copine 3 transfected 293T cells (starting dilution 1:100, dilution range 1:100-1:1,000).

RECOMMENDED SUPPORT REAGENTS

To ensure optimal results, the following support reagents are recommended:
 1) Western Blotting: use m-IgGκ BP-HRP: sc-516102 or m-IgGκ BP-HRP (Cruz Marker): sc-516102-CM (dilution range: 1:1000-1:10000), Cruz Marker™ Molecular Weight Standards: sc-2035, UltraCruz® Blocking Reagent: sc-516214 and Western Blotting Luminol Reagent: sc-2048.

DATA



copine 3 (C-7): sc-390143. Western blot analysis of copine 3 expression in non-transfected: sc-117752 (A) and human copine 3 transfected: sc-117061 (B) 293T whole cell lysates.

RESEARCH USE

For research use only, not for use in diagnostic procedures.

PROTOCOLS

See our web site at www.scbt.com for detailed protocols and support products.