



# SZABO SCANDIC

Part of Europa Biosite

## Produktinformation



Forschungsprodukte & Biochemikalien



Zellkultur & Verbrauchsmaterial



Diagnostik & molekulare Diagnostik



Laborgeräte & Service

Weitere Information auf den folgenden Seiten!  
See the following pages for more information!



### Lieferung & Zahlungsart

siehe unsere [Liefer- und Versandbedingungen](#)

### Zuschläge

- Mindermengenzuschlag
- Trockeneiszuschlag
- Gefahrgutzuschlag
- Expressversand

### SZABO-SCANDIC HandelsgmbH

Quellenstraße 110, A-1100 Wien

T. +43(0)1 489 3961-0

F. +43(0)1 489 3961-7

[mail@szabo-scandic.com](mailto:mail@szabo-scandic.com)

[www.szabo-scandic.com](http://www.szabo-scandic.com)

[linkedin.com/company/szaboscandic](https://www.linkedin.com/company/szaboscandic) 

# elastin (h): 293T Lysate: sc-117067

## BACKGROUND

Elastic fibers, which are comprised primarily of elastin, endow loose connective tissue with a resilience that complements the tensile strength of collagenous fibers. Elastin is the main component of the extracellular matrix of arteries, and it performs a regulatory function during arterial development by controlling proliferation of smooth muscle and stabilizing arterial structure. Elastin is composed largely of glycine, proline, and other hydrophobic residues, and it contains multiple lysine-derived crosslinks, such as desmosines, which link individual polypeptide chains into a rubber-like network. During aging, the elasticity of connective tissue becomes reduced because of the cross-linking of collagenous fibers with elastin. Deficiencies of elastin are associated with multiple disorders, such as supravalvular aortic stenosis and Williams-Beuren syndrome. The human elastin gene maps to chromosome 7q11.23.

## REFERENCES

- Henin-Pizieux, O., Davril, M. and Han, K.K. 1979. Isolation and characterization of desmosine(s) containing peptide fractions of normal and diseased human aortic elastin. *Paroi Arterielle* 5: 41-53.
- Cambell, N. 1990. *Biology*. Redwood City, CA: The Benjamin/Cummings Publishing Company, Inc., 784-785.
- Fazio, M.J., Mattei, M.G., Passage, E., Chu, M.L., Black, D., Solomon, E., Davidson, J.M. and Uitto, J. 1991. Human elastin gene: new evidence for localization to the long arm of chromosome 7. *Am. J. Hum. Genet.* 48: 696-703.
- Ewart, A.K., Morris, C.A., Atkinson, D., Jin, W., Sternes, K., Spallone, P., Stock, A.D., Leppert, M. and Keating, M.T. 1993. Hemizygoty at the elastin locus in a developmental disorder, Williams syndrome. *Nat. Genet.* 5: 11-16.
- Zhang, M.C., He, L., Giro, M., Yong, S.L., Tiller, G.E. and Davidson, J.M. 1999. Cutis laxa arising from frameshift mutations in exon 30 of the elastin gene (ELN). *J. Biol. Chem.* 274: 981-996.
- LocusLink Report (LocusID 2006) <http://www.ncbi.nlm.nih.gov/LocusLink/>

## CHROMOSOMAL LOCATION

Genetic locus: ELN (human) mapping to 7q11.23.

## PRODUCT

elastin (h): 293T Lysate represents a lysate of human elastin transfected 293T cells and is provided as 100 µg protein in 200 µl SDS-PAGE buffer.

## APPLICATIONS

elastin (h): 293T Lysate is suitable as a Western Blotting positive control for human reactive elastin antibodies. Recommended use: 10-20 µl per lane.

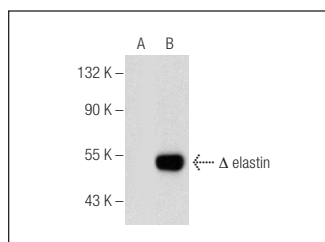
Control 293T Lysate: sc-117752 is available as a Western Blotting negative control lysate derived from non-transfected 293T cells.

elastin (A-8): sc-374638 is recommended as a positive control antibody for Western Blot analysis of enhanced human elastin expression in elastin transfected 293T cells (starting dilution 1:100, dilution range 1:100-1:1,000).

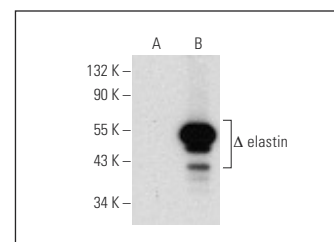
## RECOMMENDED SUPPORT REAGENTS

To ensure optimal results, the following support reagents are recommended:  
1) Western Blotting: use m-IgGκ BP-HRP: sc-516102 or m-IgGκ BP-HRP (Cruz Marker): sc-516102-CM (dilution range: 1:1000-1:10000), Cruz Marker™ Molecular Weight Standards: sc-2035, UltraCruz® Blocking Reagent: sc-516214 and Western Blotting Luminol Reagent: sc-2048.

## DATA



elastin (A-8): sc-374638. Western blot analysis of elastin expression in non-transfected: sc-117752 (A) and truncated human elastin transfected: sc-117067 (B) 293T whole cell lysates.



elastin (F-5): sc-166369. Western blot analysis of elastin expression in non-transfected: sc-117752 (A) and truncated human elastin transfected: sc-117067 (B) 293T whole cell lysates.

## STORAGE

Store at -20° C. Repeated freezing and thawing should be minimized. Sample vial should be boiled once prior to use. Non-hazardous. No MSDS required.

## RESEARCH USE

For research use only, not for use in diagnostic procedures.

## PROTOCOLS

See our web site at [www.scbt.com](http://www.scbt.com) for detailed protocols and support products.