



SZABO SCANDIC

Part of Europa Biosite

Produktinformation



Forschungsprodukte & Biochemikalien



Zellkultur & Verbrauchsmaterial



Diagnostik & molekulare Diagnostik



Laborgeräte & Service

Weitere Information auf den folgenden Seiten!
See the following pages for more information!



Lieferung & Zahlungsart

siehe unsere [Liefer- und Versandbedingungen](#)

Zuschläge

- Mindermengenzuschlag
- Trockeneiszuschlag
- Gefahrgutzuschlag
- Expressversand

SZABO-SCANDIC HandelsgmbH

Quellenstraße 110, A-1100 Wien

T. +43(0)1 489 3961-0

F. +43(0)1 489 3961-7

mail@szabo-scandic.com

www.szabo-scandic.com

[linkedin.com/company/szaboscandic](https://www.linkedin.com/company/szaboscandic) 

Sprouty 1 (h): 293T Lysate: sc-117290

BACKGROUND

Members of the sprouty family (Sprouty 1-4) are inducible negative regulators of growth factors that act through tyrosine kinase receptors. Mammalian Sprouty homologs share a well-conserved cysteine-rich C-terminal domain with their *Drosophila* counterparts. Both Sprouty 1 and 2 are anchored to membranes by palmitoylation, associate with caveolin-1 in perinuclear and vesicular structures, and are phosphorylated on serine residues. Upon stimulation, a subset is recruited to the leading edge of the plasma membrane. Sprouty 2 can associate with c-Cbl, a downregulator of RTK signaling, and inhibits the activities of several growth factors. Sprouty 2 also functions as a negative regulator of embryonic lung morphogenesis and growth. The well-conserved C-terminus of sprouty contains two domains which are necessary for Sprouty 2 co-localization with microtubules and translocation to membrane ruffles. In addition, the C-terminus is required for the inhibition of cell migration and proliferation. In conclusion, members of sprouty inhibit FGF and VEGF-mediated cell proliferation, suggesting that they may regulate angiogenesis in normal and disease processes.

REFERENCES

1. Impagnatiello, M.A., Weitzer, S., Gannon, G., Compagni, A., Cotten, M. and Christofori, G. 2001. Mammalian Sprouty1 and 2 are membrane-anchored phosphoprotein inhibitors of growth factor signaling in endothelial cells. *J. Cell Biol.* 152: 1087-1098.
2. Lim, J., Wong, E.S., Ong, S.H., Yusoff, P., Low, B.C. and Guy, G.R. 2000. Sprouty proteins are targeted to membrane ruffles upon growth factor receptor tyrosine kinase activation. Identification of a novel translocation domain. *J. Biol. Chem.* 275: 32837-32845.
3. Ozaki, K., Kadomoto, R., Asato, K., Tanimura, S., Itoh, N. and Kohno, M. 2001. ERK pathway positively regulates the expression of sprouty genes. *Biochem. Biophys. Res. Commun.* 285: 1084-1088.
4. Mailleux, A.A., Tefft, D., Ndiaye, D., Itoh, N., Thiery, J.P., Warburton, D. and Bellusci, S. 2001. Evidence that Sprouty 2 functions as an inhibitor of mouse embryonic lung growth and morphogenesis. *Mech. Dev.* 102: 81-94.
5. Lee, S.H., Schloss, D.J., Jarvis, L., Krasnow, M.A. and Swain, J.L. 2001. Inhibition of angiogenesis by a mouse sprouty protein. *J. Biol. Chem.* 276: 4128-4133.
6. Yigzaw, Y., Cartin, L., Pierre, S., Scholich, K. and Patel, T.B. 2001. The C-terminus of sprouty is important for modulation of cellular migration and proliferation. *J. Biol. Chem.* 276: 22742-22747.

CHROMOSOMAL LOCATION

Genetic locus: SPRY1 (human) mapping to 4q28.1.

PRODUCT

Sprouty 1 (h): 293T Lysate represents a lysate of human Sprouty 1 transfected 293T cells and is provided as 100 µg protein in 200 µl SDS-PAGE buffer.

RESEARCH USE

For research use only, not for use in diagnostic procedures.

APPLICATIONS

Sprouty 1 (h): 293T Lysate is suitable as a Western Blotting positive control for human reactive Sprouty 1 antibodies. Recommended use: 10-20 µl per lane.

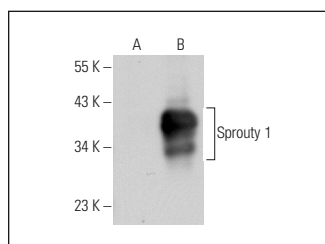
Control 293T Lysate: sc-117752 is available as a Western Blotting negative control lysate derived from non-transfected 293T cells.

Sprouty 1 (RR-15): sc-100861 is recommended as a positive control antibody for Western Blot analysis of enhanced human Sprouty 1 expression in Sprouty 1 transfected 293T cells (starting dilution 1:100, dilution range 1:100-1:1,000).

RECOMMENDED SUPPORT REAGENTS

To ensure optimal results, the following support reagents are recommended:
1) Western Blotting: use m-IgGκ BP-HRP: sc-516102 or m-IgGκ BP-HRP (Cruz Marker): sc-516102-CM (dilution range: 1:1000-1:10000), Cruz Marker™ Molecular Weight Standards: sc-2035, UltraCruz® Blocking Reagent: sc-516214 and Western Blotting Luminol Reagent: sc-2048.

DATA



Sprouty 1 (RR-15): sc-100861. Western blot analysis of Sprouty 1 expression in non-transfected: sc-117752 (A) and human Sprouty 1 transfected: sc-117290 (B) 293T whole cell lysates.

STORAGE

Store at -20° C. Repeated freezing and thawing should be minimized. Sample vial should be boiled once prior to use. Non-hazardous. No MSDS required.

PROTOCOLS

See our web site at www.scbt.com for detailed protocols and support products.