



SZABO SCANDIC

Part of Europa Biosite

Produktinformation



Forschungsprodukte & Biochemikalien



Zellkultur & Verbrauchsmaterial



Diagnostik & molekulare Diagnostik



Laborgeräte & Service

Weitere Information auf den folgenden Seiten!
See the following pages for more information!



Lieferung & Zahlungsart

siehe unsere [Liefer- und Versandbedingungen](#)

Zuschläge

- Mindermengenzuschlag
- Trockeneiszuschlag
- Gefahrgutzuschlag
- Expressversand

SZABO-SCANDIC HandelsgmbH

Quellenstraße 110, A-1100 Wien

T. +43(0)1 489 3961-0

F. +43(0)1 489 3961-7

mail@szabo-scandic.com

www.szabo-scandic.com

[linkedin.com/company/szaboscandic](https://www.linkedin.com/company/szaboscandic) 

Ig κ chain (h3): 293T Lysate: sc-117325

BACKGROUND

Antibody producing cells of the immune system require multiple rearrangements of immunoglobulin (antibody, Ig) genes. Immunoglobulins are four-chain, Y-shaped, monomeric structures of two identical heavy chains and two identical light chains held together through interchain disulfide bonds. Immunoglobulins in vertebrates help to remove non-self molecules or cells (antigens) by recognizing and binding to the antigen and carrying out effector functions that activate the immune system. Variable genetic combinations of the five heavy chain classes (M, D, G, E and A) and the two light chain isotypes, κ and λ , confer the role of an antibody. The variable region genes encoding Ig κ and λ chains are assembled from three DNA segments, the V, C and J genes. Human κ light chain genes map to chromosome 2 and the human λ light chain genes map to chromosome 22. κ gene recombination can precede λ gene recombination during B cell ontogeny and only a single light chain type is expressed in individual B cells. Antibodies in camels and sharks can lack light chain, suggesting that light chain may not be essential for antigen binding in some vertebrates.

REFERENCES

- Hieter, P.A., et al. 1980. Cloned human and mouse κ immunoglobulin constant and J region genes conserve homology in functional segments. *Cell* 22: 197-207.
- Mason, D.W., et al. 1981. The rat mixed lymphocyte reaction: roles of a dendritic cell in intestinal lymph and T cell subsets defined by monoclonal antibodies. *Immunology* 44: 75-87.
- Dyer, M.J., et al. 1981. Committed T lymphocyte stem cells of rats. Characterization by surface W3/13 antigen and radiosensitivity. *J. Exp. Med.* 154: 1164-1177.
- Hieter, P.A., et al. 1982. Evolution of human immunoglobulin κ J region genes. *J. Biol. Chem.* 257: 1516-1522.
- Durdik, J., et al. 1984. Novel κ light-chain gene rearrangements in mouse λ light chain-producing B lymphocytes. *Nature* 307: 749-752.
- Horejsi, V., et al. 1986. Monoclonal antibodies against human leukocyte antigens. I. Antibodies against β -2-Microglobulin, immunoglobulin κ light chains, HLA-DR-like antigens, T8 antigen, T1 antigen, a monocyte antigen, and a pan-leukocyte antigen. *Folia Biol.* 32: 12-25.
- Pilstrom, L. 2002. The mysterious immunoglobulin light chain. *Dev. Comp. Immunol.* 26: 207-215.
- Li, M., et al. 2004. Expression of immunoglobulin κ light chain constant region in abnormal human cervical epithelial cells. *Int. J. Biochem. Cell Biol.* 36: 2250-2257.
- LocusLink Report (LocusID: 3514). <http://www.ncbi.nlm.nih.gov/LocusLink/>

CHROMOSOMAL LOCATION

Genetic locus: IGKC (human) mapping to 2p15.3.

PRODUCT

Ig κ chain (h3): 293T Lysate represents a lysate of human Ig κ chain transfected 293T cells and is provided as 100 μ g protein in 200 μ l SDS-PAGE buffer.

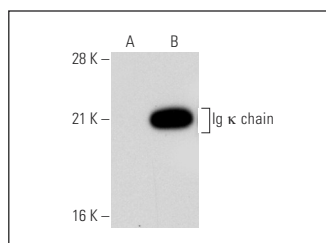
APPLICATIONS

Ig κ chain (h3): 293T Lysate is suitable as a Western Blotting positive control for human reactive Ig κ chain antibodies. Recommended use: 10-20 μ l per lane.

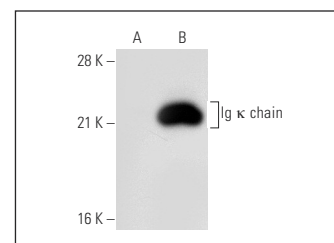
Control 293T Lysate: sc-117752 is available as a Western Blotting negative control lysate derived from non-transfected 293T cells.

Ig κ chain KP-53: sc-59264 is recommended as a positive control antibody for Western Blot analysis of enhanced human Ig κ chain expression in Ig κ chain transfected 293T cells (starting dilution 1:100, dilution range 1:100-1:1,000).

DATA



Ig κ chain (KP-53): sc-59264. Western blot analysis of Ig κ chain expression in non-transfected: sc-117752 (A) and human Ig κ chain transfected: sc-117325 (B) 293T whole cell lysates.



Ig κ chain (MEM-09): sc-51637. Western blot analysis of Ig κ chain expression in non-transfected: sc-117752 (A) and human Ig κ chain transfected: sc-117325 (B) 293T whole cell lysates.

STORAGE

Store at -20° C. Repeated freezing and thawing should be minimized. Sample vial should be boiled once prior to use. Non-hazardous. No MSDS required.

RESEARCH USE

For research use only, not for use in diagnostic procedures.

PROTOCOLS

See our web site at www.scbt.com for detailed protocols and support products.