



SZABO SCANDIC

Part of Europa Biosite

Produktinformation



Forschungsprodukte & Biochemikalien



Zellkultur & Verbrauchsmaterial



Diagnostik & molekulare Diagnostik



Laborgeräte & Service

Weitere Information auf den folgenden Seiten!
See the following pages for more information!



Lieferung & Zahlungsart

siehe unsere [Liefer- und Versandbedingungen](#)

Zuschläge

- Mindermengenzuschlag
- Trockeneiszuschlag
- Gefahrgutzuschlag
- Expressversand

SZABO-SCANDIC HandelsgmbH

Quellenstraße 110, A-1100 Wien

T. +43(0)1 489 3961-0

F. +43(0)1 489 3961-7

mail@szabo-scandic.com

www.szabo-scandic.com

[linkedin.com/company/szaboscandic](https://www.linkedin.com/company/szaboscandic) 

Ig λ light chain (h3): 293T Lysate: sc-117328

BACKGROUND

The basic structural unit of most mammalian antibodies is a glycoprotein composed of four polypeptide chains — two light chains and two heavy chains, which are connected by disulfide bonds. Each light chain is composed of two domains, one variable domain (VL) and one constant domain (CL). The variable region genes encoding immunoglobulin κ and λ chains are assembled from three DNA segments, the V, C and J genes. Human κ light chain genes map to chromosome 2 and the human λ light chain genes map to chromosome 22. κ gene recombination can precede λ gene recombination during B cell ontogeny and only a single light chain type is expressed in individual B cells.

REFERENCES

- Hieter, P.A., et al. 1980. Cloned human and mouse κ immunoglobulin constant and J region genes conserve homology in functional segments. *Cell* 22: 197-207.
- Mason, D.W., et al. 1981. The rat mixed lymphocyte reaction: roles of a dendritic cell in intestinal lymph and T cell subsets defined by monoclonal antibodies. *Immunology* 44: 75-87.
- Dyer, M.J., et al. 1981. Committed T lymphocyte stem cells of rats. Characterization by surface W3/13 antigen and radiosensitivity. *J. Exp. Med.* 154: 1164-1177.
- Hieter, P.A., et al. 1982. Evolution of human immunoglobulin κ J region genes. *J. Biol. Chem.* 257: 1516-1522.
- Durdik, J., et al. 1984. Novel κ light-chain gene rearrangements in mouse λ light chain-producing B lymphocytes. *Nature* 307: 749-752.
- Horejsi, V., et al. 1986. Monoclonal antibodies against human leucocyte antigens. I. Antibodies against β -2-Microglobulin, immunoglobulin κ light chains, HLA-DR-like antigens, T8 antigen, T1 antigen, a monocyte antigen, and a pan-leucocyte antigen. *Folia Biol.* 32: 12-25.
- Pilstrom, L. 2002. The mysterious immunoglobulin light chain. *Dev. Comp. Immunol.* 26: 207-215.
- Li, M., et al. 2004. Expression of immunoglobulin κ light chain constant region in abnormal human cervical epithelial cells. *Int. J. Biochem. Cell Biol.* 36: 2250-2257.
- LocusLink Report (LocusID: 3514). <http://www.ncbi.nlm.nih.gov/LocusLink/>

CHROMOSOMAL LOCATION

Genetic locus: IGL (human) mapping to 22q11.21.

PRODUCT

Ig λ light chain (h3): 293T Lysate represents a lysate of human Ig λ light chain transfected 293T cells and is provided as 100 μ g protein in 200 μ l SDS-PAGE buffer.

STORAGE

Store at -20° C. Repeated freezing and thawing should be minimized. Sample vial should be boiled once prior to use. Non-hazardous. No MSDS required.

APPLICATIONS

Ig λ light chain (h3): 293T Lysate is suitable as a Western Blotting positive control for human reactive Ig λ light chain antibodies. Recommended use: 10-20 μ l per lane.

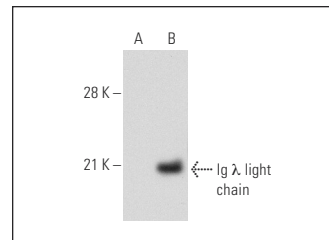
Control 293T Lysate: sc-117752 is available as a Western Blotting negative control lysate derived from non-transfected 293T cells.

Ig λ light chain (JDC-12): sc-69828 is recommended as a positive control antibody for Western Blot analysis of enhanced human Ig λ light chain expression in Ig λ light chain transfected 293T cells (starting dilution 1:100, dilution range 1:100-1:1,000).

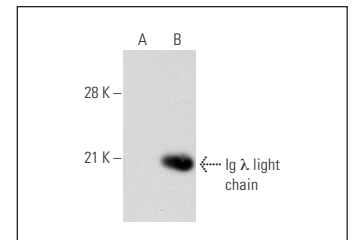
RECOMMENDED SUPPORT REAGENTS

To ensure optimal results, the following support reagents are recommended:
1) Western Blotting: use m-IgG λ BP-HRP: sc-516132 or m-IgG λ BP-HRP (Cruz Marker): sc-516132-CM (dilution range: 1:1000-1:10000), Cruz Marker™ Molecular Weight Standards: sc-2035, UltraCruz® Blocking Reagent: sc-516214 and Western Blotting Luminol Reagent: sc-2048.

DATA



Ig λ light chain (JDC-12): sc-69828. Western blot analysis of Ig λ light chain expression in non-transfected: sc-117752 (A) and human Ig λ light chain transfected: sc-117328 (B) 293T whole cell lysates.



Ig λ light chain (mAHuIgL): sc-73325. Western blot analysis of Ig λ light chain expression in non-transfected: sc-117752 (A) and human Ig λ light chain transfected: sc-117328 (B) 293T whole cell lysates.

RESEARCH USE

For research use only, not for use in diagnostic procedures.

PROTOCOLS

See our web site at www.scbt.com for detailed protocols and support products.