



SZABO SCANDIC

Part of Europa Biosite

Produktinformation



Forschungsprodukte & Biochemikalien



Zellkultur & Verbrauchsmaterial



Diagnostik & molekulare Diagnostik



Laborgeräte & Service

Weitere Information auf den folgenden Seiten!
See the following pages for more information!



Lieferung & Zahlungsart

siehe unsere [Liefer- und Versandbedingungen](#)

Zuschläge

- Mindermengenzuschlag
- Trockeneiszuschlag
- Gefahrgutzuschlag
- Expressversand

SZABO-SCANDIC HandelsgmbH

Quellenstraße 110, A-1100 Wien

T. +43(0)1 489 3961-0

F. +43(0)1 489 3961-7

mail@szabo-scandic.com

www.szabo-scandic.com

[linkedin.com/company/szaboscandic](https://www.linkedin.com/company/szaboscandic) 

ENDOD1 (h): 293T Lysate: sc-117446

BACKGROUND

ENDOD1 (endonuclease domain-containing 1 protein) is a 500 amino acid secreted protein that belongs to the DNA/RNA non-specific endonuclease family. ENDOD1 is thought to act as a DNase and an RNase. The gene that encodes ENDOD1 maps to human chromosome 11, which comprises approximately 4% of human genomic DNA and is considered a gene and disease association dense chromosome. The chromosome 11 encoded *Atm* gene is important for regulation of cell cycle arrest and apoptosis following double strand DNA breaks. *Atm* mutation leads to the disorder known as ataxia-telangiectasia. The blood disorders Sickle cell anemia and thalassemia are caused by *HBB* gene mutations, while Wilms' tumors, WAGR syndrome and Denys-Drash syndrome are associated with mutations of the *WT1* gene. Jervell and Lange-Nielsen syndrome, Jacobsen syndrome, Niemann-Pick disease, hereditary angioedema and Smith-Lemli-Opitz syndrome are also associated with defects in chromosome 11-encoded genes.

REFERENCES

1. Fabiani, J.E., Avigliano, A., Dupont, J.C. and Fabiana, J.E. 2000. Hereditary angioedema. Long-term follow-up of 88 patients. Experience of the Argentine allergy and immunology institute. *Allergol. Immunopathol.* 28: 267-271.
2. Jira, P.E., Waterham, H.R., Wanders, R.J., Smeitink, J.A., Sengers, R.C. and Wevers, R.A. 2003. Smith-Lemli-Opitz syndrome and the *DHCR7* gene. *Ann. Hum. Genet.* 67: 269-280.
3. Schuchman, E.H. 2007. The pathogenesis and treatment of acid sphingomyelinase-deficient Niemann-Pick disease. *J. Inherit. Metab. Dis.* 30: 654-663.
4. Siem, G., Früh, A., Leren, T.P., Heimdal, K., Teig, E. and Harris, S. 2008. Jervell and Lange-Nielsen syndrome in Norwegian children: aspects around cochlear implantation, hearing, and balance. *Ear Hear.* 29: 261-269.
5. Bhuiyan, Z.A., Momenah, T.S., Amin, A.S., Al-Khadra, A.S., Alders, M., Wilde, A.A. and Mannens, M.M. 2008. An intronic mutation leading to incomplete skipping of exon-2 in *KCNQ1* rescues hearing in Jervell and Lange-Nielsen syndrome. *Prog. Biophys. Mol. Biol.* 98: 319-327.
6. Coldren, C.D., Lai, Z., Shragg, P., Rossi, E., Glidewell, S.C., Zuffardi, O., Mattina, T., Ivy, D.D., Curfs, L.M., Mattson, S.N., Riley, E.P., Treier, M. and Grossfeld, P.D. 2009. Chromosomal microarray mapping suggests a role for *BSX* and neurogranin in neurocognitive and behavioral defects in the 11q terminal deletion disorder (Jacobsen syndrome). *Neurogenetics* 10: 89-95.

CHROMOSOMAL LOCATION

Genetic locus: ENDOD1 (human) mapping to 11q21.

PRODUCT

ENDOD1 (h): 293T Lysate represents a lysate of human ENDOD1 transfected 293T cells and is provided as 100 µg protein in 200 µl SDS-PAGE buffer.

RESEARCH USE

For research use only, not for use in diagnostic procedures.

APPLICATIONS

ENDOD1 (h): 293T Lysate is suitable as a Western Blotting positive control for human reactive ENDOD1 antibodies. Recommended use: 10-20 µl per lane.

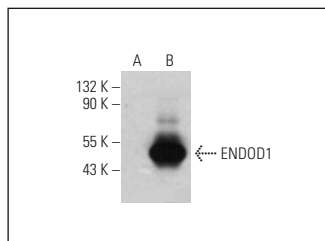
Control 293T Lysate: sc-117752 is available as a Western Blotting negative control lysate derived from non-transfected 293T cells.

ENDOD1 (G-1): sc-515153 is recommended as a positive control antibody for Western Blot analysis of enhanced human ENDOD1 expression in ENDOD1 transfected 293T cells (starting dilution 1:100, dilution range 1:100-1:1,000).

RECOMMENDED SUPPORT REAGENTS

To ensure optimal results, the following support reagents are recommended:
 1) Western Blotting: use m-IgGκ BP-HRP: sc-516102 or m-IgGκ BP-HRP (Cruz Marker): sc-516102-CM (dilution range: 1:1000-1:10000), Cruz Marker™ Molecular Weight Standards: sc-2035, UltraCruz® Blocking Reagent: sc-516214 and Western Blotting Luminol Reagent: sc-2048.

DATA



ENDOD1 (G-1): sc-515153. Western blot analysis of ENDOD1 expression in non-transfected: sc-117752 (A) and human ENDOD1 transfected: sc-117446 (B) 293T whole cell lysates.

STORAGE

Store at -20° C. Repeated freezing and thawing should be minimized. Sample vial should be boiled once prior to use. Non-hazardous. No MSDS required.

PROTOCOLS

See our web site at www.scbt.com for detailed protocols and support products.