



SZABO SCANDIC

Part of Europa Biosite

Produktinformation



Forschungsprodukte & Biochemikalien



Zellkultur & Verbrauchsmaterial



Diagnostik & molekulare Diagnostik



Laborgeräte & Service

Weitere Information auf den folgenden Seiten!
See the following pages for more information!



Lieferung & Zahlungsart

siehe unsere [Liefer- und Versandbedingungen](#)

Zuschläge

- Mindermengenzuschlag
- Trockeneiszuschlag
- Gefahrgutzuschlag
- Expressversand

SZABO-SCANDIC HandelsgmbH

Quellenstraße 110, A-1100 Wien

T. +43(0)1 489 3961-0

F. +43(0)1 489 3961-7

mail@szabo-scandic.com

www.szabo-scandic.com

[linkedin.com/company/szaboscandic](https://www.linkedin.com/company/szaboscandic) 

CUL-1 (m): 293 Lysate: sc-117749

BACKGROUND

Cullin proteins comprise a distinct family of mediators that participate in the selective targeting of proteins for ubiquitin (Ub)-mediated proteolysis. CUL-1, which is the mammalian homolog of yeast Cdc53, is an integral component of the E3 ubiquitin ligase complex designated SCF. The SCF (Skp1/CUL-1/F-box protein complex) consists of Skp1 associating with both CUL-1 and an F-box protein, such as Skp2, which determines the substrate specificity of the complex. CUL-1-mediated ubiquitination results in the degradation of cell cycle proteins cyclin D, p21 and cyclin E. Another cullin, CUL-3, facilitates the degradation of cyclin E independent of SCF activity, while CUL-2 associates with the tumor suppressing protein VHL and Elongin B to form VBC complexes, which structurally resemble the SCF ligase. Proteolysis also occurs by way of CUL-4 associating with NEDD8, a ubiquitin-like protein, where it too functions as an active component of a multifunctional E3 complex. CUL-5, also designated vasopressin-activated, calcium-mobilizing protein (VACM-1), is also included in the cullin family as it shares substantial sequence homology with CUL-1.

REFERENCES

1. Kipreos, E.T., et al. 1996. CUL-1 is required for cell cycle exit in *C. elegans* and identifies a novel gene family. *Cell* 85: 829-839.
2. Byrd, P.J., et al. 1997. Identification and analysis of expression of human VACM-1, a cullin gene family member located on chromosome 11q22-23. *Genome Res.* 7: 71-75.
3. Yu, Z.K., et al. 1998. Human CUL-1 associates with the Skp1/Skp2 complex and regulates p21(CIP1/WAF1) and cyclin D proteins. *Proc. Natl. Acad. Sci. USA* 95: 11324-11329.
4. Chen, L.C., et al. 1998. The human homologue for the *Caenorhabditis elegans* CUL-4 gene is amplified and overexpressed in primary breast cancers. *Cancer Res.* 58: 3677-3683.
5. Tyers, M., et al. 1999. One ring to rule a superfamily of E3 ubiquitin ligases. *Science* 284: 601, 603-604.
6. Singer, J.D., et al. 1999. Cullin-3 targets cyclin E for ubiquitination and controls S phase in mammalian cells. *Genes Dev.* 13: 2375-2387.
7. Iwai, K., et al. 1999. Identification of the von Hippel-Lindau tumor-suppressor protein as part of an active E3 ubiquitin ligase complex. *Proc. Natl. Acad. Sci. USA* 96: 12436-12441.
8. Khoury, J., et al. 2007. Antiinflammatory adaptation to hypoxia through adenosine-mediated cullin-1 deneddylation. *J. Clin. Invest.* 117: 703-711.
9. Fielenbach, N., et al. 2007. DRE-1: an evolutionarily conserved F-box protein that regulates *C. elegans* developmental age. *Dev. Cell* 12: 443-455.

STORAGE

Store at -20° C. Repeated freezing and thawing should be minimized. Sample vial should be boiled once prior to use. Non-hazardous. No MSDS required.

PROTOCOLS

See our web site at www.scbt.com for detailed protocols and support products.

CHROMOSOMAL LOCATION

Genetic locus: Cul1 (mouse) mapping to 6 B2.3.

PRODUCT

CUL-1 (m): 293 Lysate represents a lysate of mouse CUL-1 transfected 293 cells and is provided as 100 µg protein in 200 µl SDS-PAGE buffer.

APPLICATIONS

CUL-1 (m): 293 Lysate is suitable as a Western Blotting positive control for mouse reactive CUL-1 antibodies. Recommended use: 10-20 µl per lane.

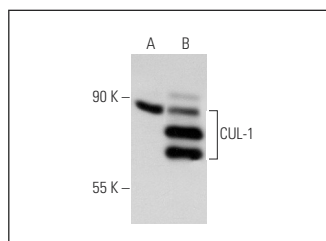
Control 293 Lysate: sc-110760 is available as a Western Blotting negative control lysate derived from non-transfected 293 cells.

CUL-1 (D-5): sc-17775 is recommended as a positive control antibody for Western Blot analysis of enhanced mouse CUL-1 expression in CUL-1 transfected 293 cells (starting dilution 1:100, dilution range 1:100-1:1,000).

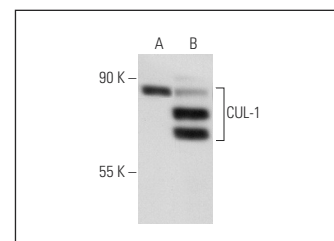
RECOMMENDED SUPPORT REAGENTS

To ensure optimal results, the following support reagents are recommended:
 1) Western Blotting: use m-IgGκ BP-HRP: sc-516102 or m-IgGκ BP-HRP (Cruz Marker): sc-516102-CM (dilution range: 1:1000-1:10000), Cruz Marker™ Molecular Weight Standards: sc-2035, UltraCruz® Blocking Reagent: sc-516214 and Western Blotting Luminol Reagent: sc-2048.

DATA



CUL-1 (D-5): sc-17775. Western blot analysis of CUL-1 expression in non-transfected: sc-110760 (A) and mouse CUL-1 transfected: sc-117749 (B) 293 whole cell lysates.



CUL-1 (AS97): sc-12761. Western blot analysis of CUL-1 expression in non-transfected: sc-110760 (A) and mouse CUL-1 transfected: sc-117749 (B) 293 whole cell lysates.

RESEARCH USE

For research use only, not for use in diagnostic procedures.