



# SZABO SCANDIC

Part of Europa Biosite

## Produktinformation



Forschungsprodukte & Biochemikalien



Zellkultur & Verbrauchsmaterial



Diagnostik & molekulare Diagnostik



Laborgeräte & Service

Weitere Information auf den folgenden Seiten!  
See the following pages for more information!



### Lieferung & Zahlungsart

siehe unsere [Liefer- und Versandbedingungen](#)

### Zuschläge

- Mindermengenzuschlag
- Trockeneiszuschlag
- Gefahrgutzuschlag
- Expressversand

### SZABO-SCANDIC HandelsgmbH

Quellenstraße 110, A-1100 Wien

T. +43(0)1 489 3961-0

F. +43(0)1 489 3961-7

[mail@szabo-scandic.com](mailto:mail@szabo-scandic.com)

[www.szabo-scandic.com](http://www.szabo-scandic.com)

[linkedin.com/company/szaboscandic](https://www.linkedin.com/company/szaboscandic) 

# ABCF1 (m2): 293T Lysate: sc-118160

## BACKGROUND

ABCF1 (ATP-binding cassette sub-family F member 1, TNF $\alpha$ -stimulated ABC protein) is a 845 amino acid protein encoded by the human gene ABCF1. ABCF1 belongs to the ABC transporter family (EF3 subfamily) and contains two ABC transporter domains. ABC proteins transport various molecules across extra- and intra-cellular membranes. ABC genes are divided into seven distinct subfamilies (ABC1, MDR/TAP, MRP, ALD, OABP, GCN20, White). Unlike other members of the superfamily, this protein lacks the transmembrane domains which are characteristic of most ABC transporters. ABCF1 is believed to have a role in mRNA translation due to its interaction with eukaryotic initiation factor 2 (eIF2). It is also associated with ribosomes. ABCF1 is ubiquitously expressed and can be induced with TNF. Upon DNA damage, ABCF1 is phosphorylated by either ATM or ATR.

## REFERENCES

- Richard, M., Drouin, R. and Beaulieu, A.D. 1998. ABC50, a novel human ATP-binding cassette protein found in tumor necrosis factor- $\alpha$ -stimulated synoviocytes. *Genomics* 53: 137-145.
- Klein, I., Sarkadi, B. and Váradi, A. 2000. An inventory of the human ABC proteins. *Biochim. Biophys. Acta* 1461: 237-262.
- Shichijo, S., Ishihara, Y., Azuma, K., Komatsu, N., Higashimoto, N., Ito, M., Nakamura, T., Ueno, T., Harada, M. and Itoh, K. 2005. ABCE1, a member of ATP-binding cassette transporter gene, encodes peptides capable of inducing HLA-A2-restricted and tumor-reactive cytotoxic T lymphocytes in colon cancer patients. *Oncol. Rep.* 13: 907-913.
- Ota, M., Katsuyama, Y., Hamano, H., Umemura, T., Kimura, A., Yoshizawa, K., Kiyosawa, K., Fukushima, H., Bahram, S., Inoko, H. and Kawa, S. 2006. Two critical genes (HLA-DRB1 and ABCF1) in the HLA region are associated with the susceptibility to autoimmune pancreatitis. *Immunogenetics* 59: 45-52.
- Chloupková, M., Pickert, A., Lee, J.Y., Souza, S., Trinh, Y.T., Connelly, S.M., Dumont, M.E., Dean, M. and Urbatsch, I.L. 2007. Expression of 25 human ABC transporters in the yeast *Pichia pastoris* and characterization of the purified ABCC3 ATPase activity. *Biochemistry* 46: 7992-8003.
- Heimerl, S., Bosserhoff, A.K., Langmann, T., Ecker, J. and Schmitz, G. 2007. Mapping ATP-binding cassette transporter gene expression profiles in melanocytes and melanoma cells. *Melanoma Res.* 17: 265-273.
- Paytubi, S., Morrice, N.A., Boudeau, J. and Proud, C.G. 2007. The N-terminal region of ABC50 interacts with eukaryotic initiation factor eIF2 and is a target for regulatory phosphorylation by CK2. *Biochem. J.* 409: 223-231.
- Matsuoka, S., Ballif, B.A., Smogorzewska, A., Hurov, K.E., Luo, J., Bakalarski, C.E., Zhao, Z., Solimini, N., Lerenthal, Y., Shiloh, Y., Gygi, S.P. and Elledge, S.J. 2007. ATM and ATR substrate analysis reveals extensive protein networks responsive to DNA damage. *Science* 316: 1160-1166.

## STORAGE

Store at -20° C. Repeated freezing and thawing should be minimized. Sample vial should be boiled once prior to use. Non-hazardous. No MSDS required.

## CHROMOSOMAL LOCATION

Genetic locus: ABCF1 (human) mapping to 6p21.33.

## PRODUCT

ABCF1 (m2): 293T Lysate represents a lysate of mouse ABCF1 transfected 293T cells and is provided as 100  $\mu$ g protein in 200  $\mu$ l SDS-PAGE buffer.

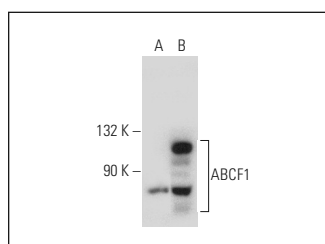
## APPLICATIONS

ABCF1 (m2): 293T Lysate is suitable as a Western Blotting positive control for mouse reactive ABCF1 antibodies. Recommended use: 10-20  $\mu$ l per lane.

Control 293T Lysate: sc-117752 is available as a Western Blotting negative control lysate derived from non-transfected 293T cells.

ABCF1 (ABC5H06): sc-81047 is recommended as a positive control antibody for Western Blot analysis of enhanced mouse ABCF1 expression in ABCF1 transfected 293T cells (starting dilution 1:100, dilution range 1:100-1:1,000).

## DATA



ABCF1 (ABC5H06): sc-81047. Western blot analysis of ABCF1 expression in non-transfected: sc-117752 (A) and mouse ABCF1 transfected: sc-118160 (B) 293T whole cell lysates.

## RESEARCH USE

For research use only, not for use in diagnostic procedures.

## PROTOCOLS

See our web site at [www.scbt.com](http://www.scbt.com) for detailed protocols and support products.