



# SZABO SCANDIC

Part of Europa Biosite

## Produktinformation



Forschungsprodukte & Biochemikalien



Zellkultur & Verbrauchsmaterial



Diagnostik & molekulare Diagnostik



Laborgeräte & Service

Weitere Information auf den folgenden Seiten!  
See the following pages for more information!



### Lieferung & Zahlungsart

siehe unsere [Liefer- und Versandbedingungen](#)

### Zuschläge

- Mindermengenzuschlag
- Trockeneiszuschlag
- Gefahrgutzuschlag
- Expressversand

### SZABO-SCANDIC HandelsgmbH

Quellenstraße 110, A-1100 Wien

T. +43(0)1 489 3961-0

F. +43(0)1 489 3961-7

[mail@szabo-scandic.com](mailto:mail@szabo-scandic.com)

[www.szabo-scandic.com](http://www.szabo-scandic.com)

[linkedin.com/company/szaboscandic](https://www.linkedin.com/company/szaboscandic) 

# Annexin XI (m): 293T Lysate: sc-118437

## BACKGROUND

The Annexin family of calcium-binding proteins is composed of at least ten mammalian genes. It is characterized by a conserved core domain, which binds to phospholipids in a  $Ca^{2+}$ -dependent manner, and a unique amino-terminal region, which may confer binding specificity. The Annexin family has been implicated as regulators of such diverse processes as ion-flux, endocytosis and exocytosis, and cellular adhesion. Two forms of Annexin XI, designated A and B, have been identified. Transfection of COS-7 cells with Annexin XI-A, but not Annexin XI-B, causes formation of Annexin XI-associated vesicles.

## REFERENCES

1. Smith, P.D. and Moss, S.E. 1994. Structural evolution of the Annexin supergene family. *Trends Genet.* 10: 241-246.
2. Waisman, D.M. 1995. Annexin II tetramer: structure and function. *Mol. Cell. Biochem.* 149-150: 301-322.
3. Mailliard, W.S., et al. 1996. Calcium-dependent binding of S100C to the N-terminal domain of Annexin I. *J. Biol. Chem.* 271: 719-725.
4. Chasserot-Golaz, S., et al. 1996. Annexin II in exocytosis: catecholamine secretion requires the translocation of p36 to the subplasmalemmal region in chromaffin cells. *J. Cell Biol.* 133: 1217-1236.
5. Sudo, T., et al. 1996. Isoform-specific intracellular vesicle formation by recombinant Annexin XI-A in Sf9 cells. *Biochem. Biophys. Res. Commun.* 223: 706-711.
6. Williams, L.H., et al. 2005. Annexin XI co-localises with Calyculin in proliferating cells of the embryonic mouse testis. *Dev. Dyn.* 234: 432-437.

## CHROMOSOMAL LOCATION

Genetic locus: Anxa11 (mouse) mapping to 14 A3.

## PRODUCT

Annexin XI (m): 293T Lysate represents a lysate of mouse Annexin XI transfected 293T cells and is provided as 100 µg protein in 200 µl SDS-PAGE buffer.

## STORAGE

Store at -20° C. Repeated freezing and thawing should be minimized. Sample vial should be boiled once prior to use. Non-hazardous. No MSDS required.

## APPLICATIONS

Annexin XI (m): 293T Lysate is suitable as a Western Blotting positive control for mouse reactive Annexin XI antibodies. Recommended use: 10-20 µl per lane.

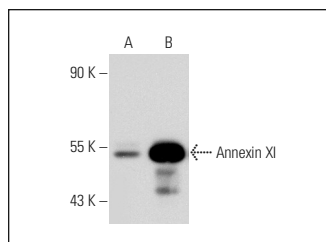
Control 293T Lysate: sc-117752 is available as a Western Blotting negative control lysate derived from non-transfected 293T cells.

Annexin XI (D-12): sc-46686 is recommended as a positive control antibody for Western Blot analysis of enhanced mouse Annexin XI expression in Annexin XI transfected 293T cells (starting dilution 1:100, dilution range 1:100-1:1,000).

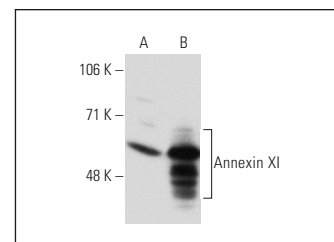
## RECOMMENDED SUPPORT REAGENTS

To ensure optimal results, the following support reagents are recommended:  
1) Western Blotting: use m-IgGκ BP-HRP: sc-516102 or m-IgGκ BP-HRP (Cruz Marker): sc-516102-CM (dilution range: 1:1000-1:10000), Cruz Marker™ Molecular Weight Standards: sc-2035, UltraCruz® Blocking Reagent: sc-516214 and Western Blotting Luminol Reagent: sc-2048.

## DATA



Annexin XI (D-12): sc-46686. Western blot analysis of Annexin XI expression in non-transfected: sc-117752 (A) and mouse Annexin XI transfected: sc-118437 (B) 293T whole cell lysates.



Annexin XI (16): sc-136382. Western blot analysis of Annexin XI expression in non-transfected: sc-117752 (A) and mouse Annexin XI transfected: sc-118437 (B) 293T whole cell lysates.

## RESEARCH USE

For research use only, not for use in diagnostic procedures.

## PROTOCOLS

See our web site at [www.scbt.com](http://www.scbt.com) for detailed protocols and support products.