



# SZABO SCANDIC

Part of Europa Biosite

## Produktinformation



Forschungsprodukte & Biochemikalien



Zellkultur & Verbrauchsmaterial



Diagnostik & molekulare Diagnostik



Laborgeräte & Service

Weitere Information auf den folgenden Seiten!  
See the following pages for more information!



### Lieferung & Zahlungsart

siehe unsere [Liefer- und Versandbedingungen](#)

### Zuschläge

- Mindermengenzuschlag
- Trockeneiszuschlag
- Gefahrgutzuschlag
- Expressversand

### SZABO-SCANDIC HandelsgmbH

Quellenstraße 110, A-1100 Wien

T. +43(0)1 489 3961-0

F. +43(0)1 489 3961-7

[mail@szabo-scandic.com](mailto:mail@szabo-scandic.com)

[www.szabo-scandic.com](http://www.szabo-scandic.com)

[linkedin.com/company/szaboscandic](https://www.linkedin.com/company/szaboscandic) 

# apoM (m): 293T Lysate: sc-118491

## BACKGROUND

Apolipoproteins are protein components of plasma lipoproteins. ApoM (apolipoprotein M), also known as protein G3a, is a member of the Lipocalin family of proteins. ApoM is exclusively expressed in kidney tubular epithelial cells and liver hepatocytes. Mature apoM retains its signal peptide, which acts as a hydrophobic anchor, and contains a structurally conserved eight stranded antiparallel  $\beta$  barrel which binds retinol and retinoic acid. ApoM may play a key role in reverse cholesterol transport. It mainly associates with high density lipoprotein (HDL) and to a lesser extent with triglyceride-rich lipoprotein (TGRLP) and low-density lipoprotein (LDL). ApoM is important for the pre $\beta$ -HDL formation. Pre $\beta$ -HDL is an important acceptor of peripheral cellular cholesterol. The concentration of apoM in plasma strongly correlates with total cholesterol. Low concentrations of apoM in plasma is associated with diabetes.

## REFERENCES

- Zhang, X.Y., Dong, X., Zheng, L., Luo, G.H., Liu, Y.H., Ekström, U., Nilsson-Ehle, P., Ye, Q. and Xu, N. 2003. Specific tissue expression and cellular localization of human apolipoprotein M as determined by *in situ* hybridization. *Acta Histochem.* 105: 67-72.
- Wolfrum, C., Poy, M.N. and Stoffel, M. 2005. Apolipoprotein M is required for pre B-HDL formation and cholesterol efflux to HDL and protects against atherosclerosis. *Nat. Med.* 11: 418-422.
- Christoffersen, C., Nielsen, L.B., Axler, O., Andersson, A., Johnsen, A.H. and Dahlbäck, B. 2006. Isolation and characterization of human apolipoprotein M-containing lipoproteins. *J. Lipid Res.* 47: 1833-1843.
- Dahlbäck, B. and Nielsen, L.B. 2006. Apolipoprotein M—a novel player in high-density lipoprotein metabolism and atherosclerosis. *Curr. Opin. Lipidol.* 17: 291-295.
- Christoffersen, C., Dahlbäck, B. and Nielsen, L.B. 2006. Apolipoprotein M: progress in understanding its regulation and metabolic functions. *Scand. J. Clin. Lab. Invest.* 66: 631-637.
- Xu, X., Ye, Q., Xu, N., He, X., Luo, G., Zhang, X., Zhu, J., Zhang, Y. and Nilsson-Ehle, P. 2006. Effects of ischemia-reperfusion injury on apolipoprotein M expression in the liver. *Transplant. Proc.* 38: 2769-2773.
- Ahnström, J., Faber, K., Axler, O. and Dahlbäck, B. 2007. Hydrophobic ligand binding properties of the human Lipocalin apolipoprotein M. *J. Lipid Res.* 48: 1754-1762.
- Axler, O., Ahnström, J. and Dahlbäck, B. 2007. An ELISA for apolipoprotein M reveals a strong correlation to total cholesterol in human plasma. *J. Lipid Res.* 48: 1772-1780.
- Huang, X.S., Zhao, S.P., Hu, M. and Luo, Y.P. 2007. Apolipoprotein M likely extends its anti-atherogenesis via anti-inflammation. *Med. Hypotheses* 69: 136-140.

## STORAGE

Store at -20° C. Repeated freezing and thawing should be minimized. Sample vial should be boiled once prior to use. Non-hazardous. No MSDS required.

## CHROMOSOMAL LOCATION

Genetic locus: Apom (mouse) mapping to 17 B1.

## PRODUCT

apoM (m): 293T Lysate represents a lysate of mouse apoM transfected 293T cells and is provided as 100  $\mu$ g protein in 200  $\mu$ l SDS-PAGE buffer.

## APPLICATIONS

apoM (m): 293T Lysate is suitable as a Western Blotting positive control for mouse reactive apoM antibodies. Recommended use: 10-20  $\mu$ l per lane.

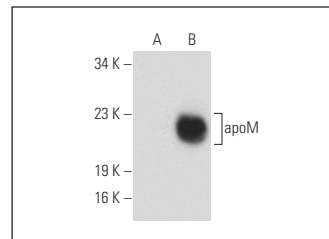
Control 293T Lysate: sc-117752 is available as a Western Blotting negative control lysate derived from non-transfected 293T cells.

apoM (A-10): sc-365139 is recommended as a positive control antibody for Western Blot analysis of enhanced mouse apoM expression in apoM transfected 293T cells (starting dilution 1:100, dilution range 1:100-1:1,000).

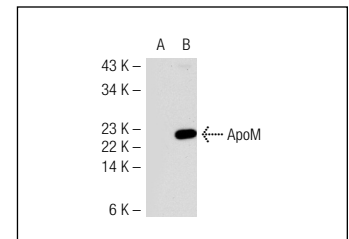
## RECOMMENDED SUPPORT REAGENTS

To ensure optimal results, the following support reagents are recommended:  
 1) Western Blotting: use m-IgG $\kappa$  BP-HRP: sc-516102 or m-IgG $\kappa$  BP-HRP (Cruz Marker): sc-516102-CM (dilution range: 1:1000-1:10000), Cruz Marker™ Molecular Weight Standards: sc-2035, UltraCruz® Blocking Reagent: sc-516214 and Western Blotting Luminol Reagent: sc-2048.

## DATA



apoM (A-10): sc-365139. Western blot analysis of apoM expression in non-transfected: sc-117752 (A) and mouse apoM transfected: sc-118491 (B) 293T whole cell lysates.



apoM (8F12C6B8): sc-81165. Western blot analysis of ApoM expression in non-transfected: sc-117752 (A) and mouse ApoM transfected: sc-118491 (B) 293T whole cell lysates.

## RESEARCH USE

For research use only, not for use in diagnostic procedures.

## PROTOCOLS

See our web site at [www.scbt.com](http://www.scbt.com) for detailed protocols and support products.