



SZABO SCANDIC

Part of Europa Biosite

Produktinformation



Forschungsprodukte & Biochemikalien



Zellkultur & Verbrauchsmaterial



Diagnostik & molekulare Diagnostik



Laborgeräte & Service

Weitere Information auf den folgenden Seiten!
See the following pages for more information!



Lieferung & Zahlungsart

siehe unsere [Liefer- und Versandbedingungen](#)

Zuschläge

- Mindermengenzuschlag
- Trockeneiszuschlag
- Gefahrgutzuschlag
- Expressversand

SZABO-SCANDIC HandelsgmbH

Quellenstraße 110, A-1100 Wien

T. +43(0)1 489 3961-0

F. +43(0)1 489 3961-7

mail@szabo-scandic.com

www.szabo-scandic.com

[linkedin.com/company/szaboscandic](https://www.linkedin.com/company/szaboscandic) 

ASL (m): 293T Lysate: sc-118589

BACKGROUND

ASL (argininosuccinate lyase), also known as ASAL or arginosuccinase, is a member of the lyase 1 family of proteins and is predominantly expressed in the liver. Localizing to the cytoplasm and existing as a homotetramer, ASL catalyzes the hydrolytic cleavage of arginosuccinic acid (ASA) to fumarate and arginine, an essential step of the urea cycle which is crucial for the detoxification of ammonia. This reaction is also involved in the biosynthesis of arginine. In addition, ASL shares high sequence homology with the avian and reptilian eye lens protein, δ -crystallin. Mutations in the gene encoding ASL leads to an accumulation of ASA in body fluids and results in Arginosuccinic aciduria (ASAuria), an autosomal recessive disorder that is characterized by hyperammonemia, liver enlargement, convulsions, physical and mental retardation, episodic unconsciousness and dry and brittle hair showing trichorrhexis nodosa (weak points or nodes in the hair shaft).

REFERENCES

1. Turner, M.A., Simpson, A., McInnes, R.R. and Howell, P.L. 1997. Human arginosuccinate lyase: a structural basis for intragenic complementation. *Proc. Natl. Acad. Sci. USA* 94: 9063-9068.
2. Yu, B. and Howell, P.L. 2000. Intragenic complementation and the structure and function of arginosuccinate lyase. *Cell. Mol. Life Sci.* 57: 1637-1651.
3. Sampaleanu, L.M., Vallée, F., Thompson, G.D. and Howell, P.L. 2001. Three-dimensional structure of the arginosuccinate lyase frequently complementing allele Q286R. *Biochemistry* 40: 15570-15580.
4. Yu, B., Thompson, G.D., Yip, P., Howell, P.L. and Davidson, A.R. 2001. Mechanisms for intragenic complementation at the human arginosuccinate lyase locus. *Biochemistry* 40: 15581-15590.
5. Linnebank, M., Tschiedel, E., Häberle, J., Linnebank, A., Willenbring, H., Kleijer, W.J. and Koch, H.G. 2002. Arginosuccinate lyase (ASL) deficiency: mutation analysis in 27 patients and a completed structure of the human ASL gene. *Hum. Genet.* 111: 350-359.
6. Tanaka, T., Nagao, M., Mori, T. and Tsutsumi, H. 2002. A novel stop codon mutation (X465Y) in the arginosuccinate lyase gene in a patient with arginosuccinic aciduria. *Tohoku J. Exp. Med.* 198: 119-124.
7. Christodoulou, J., Craig, H.J., Walker, D.C., Weaving, L.S., Pearson, C.E. and McInnes, R.R. 2006. Deletion hotspot in the arginosuccinate lyase gene: association with topoisomerase II and DNA polymerase α sites. *Hum. Mutat.* 27: 1065-1071.
8. Lee, H.J., Lai, Y.H., Huang, Y.T., Huang, C.W., Chen, Y.H. and Chang, G.G. 2006. Critical role of tryptophanyl residues in the conformational stability of goose δ -crystallin. *Exp. Eye Res.* 83: 658-666.
9. Trevisson, E., Salvati, L., Baldoin, M.C., Toldo, I., Casarin, A., Sacconi, S., Cesaro, L., Basso, G. and Burlina, A.B. 2007. Arginosuccinate lyase deficiency: mutational spectrum in Italian patients and identification of a novel ASL pseudogene. *Hum. Mutat.* 28: 694-702.

CHROMOSOMAL LOCATION

Genetic locus: Asl (mouse) mapping to 5 G1.3.

PRODUCT

ASL (m): 293T Lysate represents a lysate of mouse ASL transfected 293T cells and is provided as 100 μ g protein in 200 μ l SDS-PAGE buffer.

APPLICATIONS

ASL (m): 293T Lysate is suitable as a Western Blotting positive control for mouse reactive ASL antibodies. Recommended use: 10-20 μ l per lane.

Control 293T Lysate: sc-117752 is available as a Western Blotting negative control lysate derived from non-transfected 293T cells.

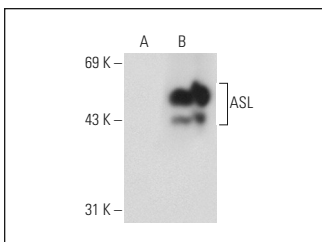
ASL (B-1): sc-166787 is recommended as a positive control antibody for Western Blot analysis of enhanced mouse ASL expression in ASL transfected 293T cells (starting dilution 1:100, dilution range 1:100-1:1,000).

RECOMMENDED SUPPORT REAGENTS

To ensure optimal results, the following support reagents are recommended:

- 1) Western Blotting: use m-IgG κ BP-HRP: sc-516102 or m-IgG κ BP-HRP (Cruz Marker): sc-516102-CM (dilution range: 1:1000-1:10000), Cruz Marker™ Molecular Weight Standards: sc-2035, UltraCruz® Blocking Reagent: sc-516214 and Western Blotting Luminol Reagent: sc-2048.

DATA



ASL (B-1): sc-166787. Western blot analysis of ASL expression in non-transfected: sc-117752 (A) and mouse ASL transfected: sc-118589 (B) 293T whole cell lysates.

STORAGE

Store at -20° C. Repeated freezing and thawing should be minimized. Sample vial should be boiled once prior to use. Non-hazardous. No MSDS required.

RESEARCH USE

For research use only, not for use in diagnostic procedures.

PROTOCOLS

See our web site at www.scbt.com for detailed protocols and support products.