



SZABO SCANDIC

Part of Europa Biosite

Produktinformation



Forschungsprodukte & Biochemikalien



Zellkultur & Verbrauchsmaterial



Diagnostik & molekulare Diagnostik



Laborgeräte & Service

Weitere Information auf den folgenden Seiten!
See the following pages for more information!



Lieferung & Zahlungsart

siehe unsere [Liefer- und Versandbedingungen](#)

Zuschläge

- Mindermengenzuschlag
- Trockeneiszuschlag
- Gefahrgutzuschlag
- Expressversand

SZABO-SCANDIC HandelsgmbH

Quellenstraße 110, A-1100 Wien

T. +43(0)1 489 3961-0

F. +43(0)1 489 3961-7

mail@szabo-scandic.com

www.szabo-scandic.com

[linkedin.com/company/szaboscandic](https://www.linkedin.com/company/szaboscandic) 

BBS7 (m): 293T Lysate: sc-118689

BACKGROUND

Bardet-Biedl syndrome (BBS) is a pleiotropic genetic disorder characterized by obesity, photoreceptor degeneration, polydactyly, hypogenitalism, renal abnormalities and developmental delay. BBS patients also have an increased risk of developing diabetes, hypertension and congenital heart defects. BBS is a heterogeneous disorder mapping to eight genetic loci and encoding eight proteins, BBS1-BBS8. Five BBS proteins encode basal body or cilia proteins, suggesting that BBS is a ciliary dysfunction disorder. BBS2 contains two overlapping genes: BBS2L1 and BBS2L2. BBS1 was renamed BBS7, whereas BBS2L2 independently functions as BBS1. BBS7 contains 672 amino acids and is expressed at low to moderate levels in most human tissues.

REFERENCES

1. Myktyyn, K., Nishimura, D.Y., Searby, C.C., Shastri, M., Yen, H.J., Beck, J.S., Braun, T., Streb, L.M., Cornier, A.S., Cox, G.F., Fulton, A.B., Carmi, R., Lülec, G., Chandrasekharappa, S.C., Collins, F.S., Jacobson, S.G., Heckenlively, J.R., Weleber, R.G., Stone, E.M. and Sheffield, V.C. 2002. Identification of the gene (BBS1) most commonly involved in Bardet-Biedl syndrome, a complex human obesity syndrome. *Nat. Genet.* 31: 435-438.
2. Online Mendelian Inheritance in Man, OMIM™. 2002. Johns Hopkins University, Baltimore, MD. MIM Number: 607590. World Wide Web URL: <http://www.ncbi.nlm.nih.gov/omim/>
3. Badano, J.L., Ansley, S.J., Leitch, C.C., Lewis, R.A., Lupski, J.R. and Katsanis, N. 2003. Identification of a novel Bardet-Biedl syndrome protein, BBS7, that shares structural features with BBS1 and BBS2. *Am. J. Hum. Genet.* 72: 650-658.
4. Héon, E., Westall, C., Carmi, R., Elbedour, K., Panton, C., Mackeen, L., Stone, E.M. and Sheffield, V.C. 2005. Ocular phenotypes of three genetic variants of Bardet-Biedl syndrome. *Am. J. Med. Genet. A* 132: 283-287.
5. Nakane, T. and Biesecker, L.G. 2005. No evidence for triallelic inheritance of MKKS/BBS loci in Amish Mckusick-Kaufman syndrome. *Am. J. Med. Genet. A* 138: 32-34.
6. Hichri, H., Stoetzel, C., Laurier, V., Caron, S., Sigaudy, S., Sarda, P., Hamel, C., Martin-Coignard, D., Gilles, M., Leheup, B., Holder, M., Kaplan, J., Bitoun, P., Lacombe, D., Verloes, A., Bonneau, D., Perrin-Schmitt, F., Brandt, C., Besancon, A.F., Mandel, J.L., Cossée, M. and Dollfus, H. 2005. Testing for triallelism: analysis of six BBS genes in a Bardet-Biedl syndrome family cohort. *Eur. J. Hum. Genet.* 13: 607-616.
7. Dollfus, H., Verloes, A., Bonneau, D., Cossée, M., Perrin-Schmitt, F., Brandt, C., Flament, J. and Mandel, J.L. 2005. Update on Bardet-Biedl syndrome. *J. Fr. Ophthalmol.* 28: 106-112.

CHROMOSOMAL LOCATION

Genetic locus: Bbs7 (mouse) mapping to 3 B.

PRODUCT

BBS7 (m): 293T Lysate represents a lysate of mouse BBS7 transfected 293T cells and is provided as 100 µg protein in 200 µl SDS-PAGE buffer.

APPLICATIONS

BBS7 (m): 293T Lysate is suitable as a Western Blotting positive control for mouse reactive BBS7 antibodies. Recommended use: 10-20 µl per lane.

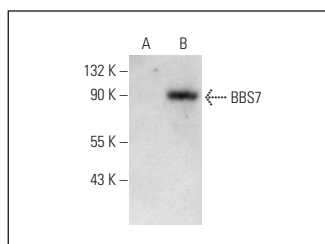
Control 293T Lysate: sc-117752 is available as a Western Blotting negative control lysate derived from non-transfected 293T cells.

BBS7 (E-8): sc-390403 is recommended as a positive control antibody for Western Blot analysis of enhanced mouse BBS7 expression in BBS7 transfected 293T cells (starting dilution 1:100, dilution range 1:100-1:1,000).

RECOMMENDED SUPPORT REAGENTS

To ensure optimal results, the following support reagents are recommended:
 1) Western Blotting: use m-IgGλ BP-HRP: sc-516132 or m-IgGλ BP-HRP (Cruz Marker): sc-516132-CM (dilution range: 1:1000-1:10000), Cruz Marker™ Molecular Weight Standards: sc-2035, UltraCruz® Blocking Reagent: sc-516214 and Western Blotting Luminol Reagent: sc-2048.

DATA



BBS7 (E-8): sc-390403. Western blot analysis of BBS7 expression in non-transfected: sc-117752 (A) and mouse BBS7 transfected: sc-118689 (B) 293T whole cell lysates.

STORAGE

Store at -20° C. Repeated freezing and thawing should be minimized. Sample vial should be boiled once prior to use. Non-hazardous. No MSDS required.

RESEARCH USE

For research use only, not for use in diagnostic procedures.

PROTOCOLS

See our web site at www.scbt.com for detailed protocols and support products.