



SZABO SCANDIC

Part of Europa Biosite

Produktinformation



Forschungsprodukte & Biochemikalien



Zellkultur & Verbrauchsmaterial



Diagnostik & molekulare Diagnostik



Laborgeräte & Service

Weitere Information auf den folgenden Seiten!
See the following pages for more information!



Lieferung & Zahlungsart

siehe unsere [Liefer- und Versandbedingungen](#)

Zuschläge

- Mindermengenzuschlag
- Trockeneiszuschlag
- Gefahrgutzuschlag
- Expressversand

SZABO-SCANDIC HandelsgmbH

Quellenstraße 110, A-1100 Wien

T. +43(0)1 489 3961-0

F. +43(0)1 489 3961-7

mail@szabo-scandic.com

www.szabo-scandic.com

[linkedin.com/company/szaboscandic](https://www.linkedin.com/company/szaboscandic) 

CA I (m): 293T Lysate: sc-118938

BACKGROUND

Carbonic anhydrases (CAs), also designated carbonate dehydratases or carbonate hydrolyases, form a large family of genes that encode zinc metalloenzymes of great physiologic importance. As catalysts of the reversible hydration of carbon dioxide, these enzymes participate in a variety of biologic processes; including respiration, acid-base balance, bone resorption and calcification as well as the formation of aqueous humor, cerebrospinal fluid, saliva and gastric acid. Genes in the α -carbonic anhydrase family encode either active carbonic anhydrase isozymes or "acatalytic" (devoid of CO₂ hydration activity) carbonic anhydrase-related proteins. Human CA I (CA1) is encoded by the CA1 gene, which has been assigned to chromosome 8 and harbors a cluster of CA genes. CA I localizes to the cytoplasm and research indicates that a severe deficiency of CA I does not result in any obvious hematological or renal consequences.

REFERENCES

- Hopkinson, D.A., Coppock, J.S., Mühlemann, M.F. and Edwards, Y.H. 1975. The detection and differentiation of the products of the human carbonic anhydrase loci, CA I and CA II using fluorogenic substrates. *Ann. Hum. Genet.* 38: 155-162.
- Davis, M.B., West, L.F., Barlow, J.H., Butterworth, P.H., Lloyd, J.C. and Edwards, Y.H. 1987. Regional localization of carbonic anhydrase genes CA1 and CA3 on human chromosome 8. *Somat. Cell Mol. Genet.* 13: 173-178.
- Edwards, Y.H., Barlow, J.H., Konialis, C.P., Povey, S. and Butterworth, P.H. 1988. Assignment of the gene determining human carbonic anhydrase, CA I, to chromosome 8. *Ann. Hum. Genet.* 50: 123-129.
- Hewett-Emmett, D. and Tashian, R.E. 1996. Functional diversity, conservation, and convergence in the evolution of the α -, β -, and γ -carbonic anhydrase gene families. *Mol. Phylogenet. Evol.* 5: 50-77.
- Ichihara, N., Sasaki, K., Iseri, S., Kimura, H., Miura, K., Nishita, T. and Asari, M. 1998. Immunohistological localization of carbonic anhydrase isozymes (CA I, CA II and CA III) in bovine male reproductive tracts. *Okajimas Folia Anat. Jpn.* 74: 193-198.
- Asari, M., Kimura, H., Ichihara, N., Kasuya, T. and Nishita, T. 2000. Immunohistochemistry of carbonic anhydrase isozymes (CA I, II and III) in canine salivary glands: a distributional and comparative assessment. *Anat. Histol. Embryol.* 29: 9-12.
- Supuran, C.T., Scozzafava, A., Ilies, M.A. and Briganti, F. 2000. Carbonic anhydrase inhibitors: synthesis of sulfonamides incorporating 2,4,6-trisubstituted-pyridinium-ethylcarboxamido moieties possessing membrane-impermeability and *in vivo* selectivity for the membrane-bound (CA IV) versus the cytosolic (CA I and CA II) isozymes. *J. Enzym. Inhib.* 15: 381-401.
- Kivela, A.J., Saarnio, J., Karttunen, T.J., Kivelä, J., Parkkila, A.K., Pastorekova, S., Pastorek, J., Waheed, A., Sly, W.S., Parkkila, T.S. and Rajaniemi, H. 2001. Differential expression of cytoplasmic carbonic anhydrases, membrane associated isozymes, CA IX and XII, in normal mucosa of large intestine and in colorectal tumors. *Dig. Dis. Sci.* 46: 2179-2186.

CHROMOSOMAL LOCATION

Genetic locus: Ca1 (mouse) mapping to 3 A1.

PRODUCT

CA I (m): 293T Lysate represents a lysate of mouse CA I transfected 293T cells and is provided as 100 μ g protein in 200 μ l SDS-PAGE buffer.

APPLICATIONS

CA I (m): 293T Lysate is suitable as a Western Blotting positive control for mouse reactive CA I antibodies. Recommended use: 10-20 μ l per lane.

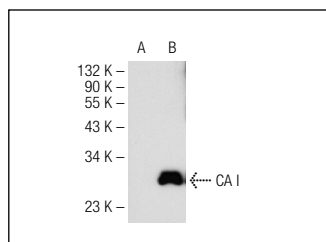
Control 293T Lysate: sc-117752 is available as a Western Blotting negative control lysate derived from non-transfected 293T cells.

CA I (D-4): sc-166796 is recommended as a positive control antibody for Western Blot analysis of enhanced mouse CA I expression in CA I transfected 293T cells (starting dilution 1:100, dilution range 1:100-1:1,000).

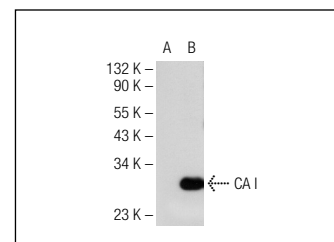
RECOMMENDED SUPPORT REAGENTS

To ensure optimal results, the following support reagents are recommended: 1) Western Blotting: use m-IgG κ BP-HRP: sc-516102 or m-IgG κ BP-HRP (Cruz Marker): sc-516102-CM (dilution range: 1:1000-1:10000), Cruz Marker™ Molecular Weight Standards: sc-2035, UltraCruz® Blocking Reagent: sc-516214 and Western Blotting Luminol Reagent: sc-2048.

DATA



CA I (D-4): sc-166796. Western blot analysis of CA I expression in non-transfected: sc-117752 (A) and mouse CA I transfected: sc-118938 (B) 293T whole cell lysates.



CA I (C-7): sc-166795. Western blot analysis of CA I expression in non-transfected: sc-117752 (A) and mouse CA I transfected: sc-118938 (B) 293T whole cell lysates.

STORAGE

Store at -20° C. Repeated freezing and thawing should be minimized. Sample vial should be boiled once prior to use. Non-hazardous. No MSDS required.

RESEARCH USE

For research use only, not for use in diagnostic procedures.

PROTOCOLS

See our web site at www.scbt.com for detailed protocols and support products.