



SZABO SCANDIC

Part of Europa Biosite

Produktinformation



Forschungsprodukte & Biochemikalien



Zellkultur & Verbrauchsmaterial



Diagnostik & molekulare Diagnostik



Laborgeräte & Service

Weitere Information auf den folgenden Seiten!
See the following pages for more information!



Lieferung & Zahlungsart

siehe unsere [Liefer- und Versandbedingungen](#)

Zuschläge

- Mindermengenzuschlag
- Trockeneiszuschlag
- Gefahrgutzuschlag
- Expressversand

SZABO-SCANDIC HandelsgmbH

Quellenstraße 110, A-1100 Wien

T. +43(0)1 489 3961-0

F. +43(0)1 489 3961-7

mail@szabo-scandic.com

www.szabo-scandic.com

[linkedin.com/company/szaboscandic](https://www.linkedin.com/company/szaboscandic) 

Calumenin (m): 293T Lysate: sc-118975

BACKGROUND

Calumenin is a 315 amino acid Ca^{2+} -binding member of the CREC, EF-hand protein family. Calumenin is a secreted protein that contains six Ca^{2+} -binding (EF-hand) motifs and is expressed in the lumen of the endoplasmic reticulum (ER) and Golgi apparatus. In the presence of Ca^{2+} , Calumenin interacts with serum amyloid P component (SAP) and, together, they may play a role in the immunological defense system and participate in amyloidosis, the pathological formation of amyloid deposits in different types of tissues. Calumenin has an inhibitory effect on the vitamin K-dependent γ -carboxylation system which converts vitamin K-dependent proteins to Gla-containing proteins. Calumenin may also be involved in the pathophysiology of thrombosis and/or wound healing by acting in an autocrine or paracrine manner.

REFERENCES

1. Yabe, D., Nakamura, T., Kanazawa, N., Tashiro, K. and Honjo, T. 1997. Calumenin, a Ca^{2+} -binding protein retained in the endoplasmic reticulum with a novel carboxyl-terminal sequence, HDEF. *J. Biol. Chem.* 272: 18232-18239.
2. Vorum, H., Hager, H., Christensen, B.M., Nielsen, S. and Honore, B. 1999. Human Calumenin localizes to the secretory pathway and is secreted to the medium. *Exp. Cell Res.* 248: 473-481.
3. Vorum, H., Jacobsen, C. and Honore, B. 2000. Calumenin interacts with serum amyloid P component. *FEBS Lett.* 465: 129-134.
4. Jung, D.H. and Kim, D.H. 2004. Characterization of isoforms and genomic organization of mouse Calumenin. *Gene* 327: 185-194.
5. Wajih, N., Sane, D.C., Hutson, S.M. and Wallin, R. 2004. The inhibitory effect of Calumenin on the vitamin K-dependent γ -carboxylation system. Characterization of the system in normal and warfarin-resistant rats. *J. Biol. Chem.* 279: 25276-25283.
6. Hengstschläger, M., Rosner, M., Fountoulakis, M. and Lubec, G. 2005. The cellular response to ectopic overexpression of the tuberous sclerosis genes, TSC1 and TSC2: a proteomic approach. *Int. J. Oncol.* 27: 831-838.
7. Kollers, S., Blott, S.C. and Rocha, D. 2005. Confirmation of the mapping of the porcine Calumenin gene (CALU) to chromosome 18. *Anim. Genet.* 36: 177-178.
8. Pocerich, C.B., Boyd-Kimball, D., Poon, H.F., Thongboonkerd, V., Lynn, B.C., Klein, J.B., Calebrese, V., Nath, A. and Butterfield, D.A. 2005. Proteomics analysis of human astrocytes expressing the HIV protein TAT. *Brain Res. Mol. Brain Res.* 133: 307-316.
9. Jung, D.H., Mo, S.H. and Kim, D.H. 2006. Calumenin, a multiple EF-hands Ca^{2+} -binding protein, interacts with ryanodine receptor-1 in rabbit skeletal sarcoplasmic reticulum. *Biochem. Biophys. Res. Commun.* 343: 34-42.

CHROMOSOMAL LOCATION

Genetic locus: Calu (mouse) mapping to 6 A3.3.

STORAGE

Store at -20°C . Repeated freezing and thawing should be minimized. Sample vial should be boiled once prior to use. Non-hazardous. No MSDS required.

PRODUCT

Calumenin (m): 293T Lysate represents a lysate of mouse Calumenin transfected 293T cells and is provided as 100 μg protein in 200 μl SDS-PAGE buffer.

APPLICATIONS

Calumenin (m): 293T Lysate is suitable as a Western Blotting positive control for mouse reactive Calumenin antibodies. Recommended use: 10-20 μl per lane.

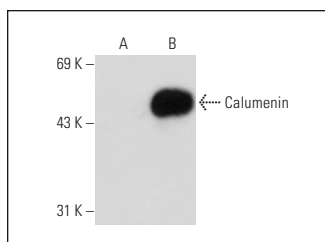
Control 293T Lysate: sc-117752 is available as a Western Blotting negative control lysate derived from non-transfected 293T cells.

Calumenin (F-8): sc-271357 is recommended as a positive control antibody for Western Blot analysis of enhanced mouse Calumenin expression in Calumenin transfected 293T cells (starting dilution 1:100, dilution range 1:100-1:1,000).

RECOMMENDED SUPPORT REAGENTS

To ensure optimal results, the following support reagents are recommended:
1) Western Blotting: use m-IgG κ BP-HRP: sc-516102 or m-IgG κ BP-HRP (Cruz Marker): sc-516102-CM (dilution range: 1:1000-1:10000), Cruz Marker™ Molecular Weight Standards: sc-2035, UltraCruz® Blocking Reagent: sc-516214 and Western Blotting Luminol Reagent: sc-2048.

DATA



Calumenin (F-8): sc-271357. Western blot analysis of Calumenin expression in non-transfected: sc-117752 (A) and mouse Calumenin transfected: sc-118975 (B) 293T whole cell lysates.

RESEARCH USE

For research use only, not for use in diagnostic procedures.

PROTOCOLS

See our web site at www.scbt.com for detailed protocols and support products.