



SZABO SCANDIC

Part of Europa Biosite

Produktinformation



Forschungsprodukte & Biochemikalien



Zellkultur & Verbrauchsmaterial



Diagnostik & molekulare Diagnostik



Laborgeräte & Service

Weitere Information auf den folgenden Seiten!
See the following pages for more information!



Lieferung & Zahlungsart

siehe unsere [Liefer- und Versandbedingungen](#)

Zuschläge

- Mindermengenzuschlag
- Trockeneiszuschlag
- Gefahrgutzuschlag
- Expressversand

SZABO-SCANDIC HandelsgmbH

Quellenstraße 110, A-1100 Wien

T. +43(0)1 489 3961-0

F. +43(0)1 489 3961-7

mail@szabo-scandic.com

www.szabo-scandic.com

[linkedin.com/company/szaboscandic](https://www.linkedin.com/company/szaboscandic) 

CCL28 (m): 293T Lysate: sc-119084

BACKGROUND

CCL28 functions in chemotactic activity for resting CD4, CD8 T cells and eosinophils. CCL28, a secreted protein, binds to CCR3 and CCR10 (known previously as orphan G protein-coupled receptor GPR2) and induces calcium mobilization in a dose-dependent manner. CCL28 is preferentially expressed by epithelial cells of diverse tissues including normal and pathological colon, salivary gland, mammary gland, trachea and rectum. CCL28 belongs to the subfamily of small cytokine CC genes that encode proteins having two adjacent cysteines. Several alternative splice variants may exist.

REFERENCES

1. Wang, W., Soto, H., Oldham, E.R., Buchanan, M.E., Homey, B., Catron, D., Jenkins, N., Copeland, N.G., Gilbert, D.J., Nguyen, N., Abrams, J., Kershenovich, D., Smith, K., McClanahan, T., Vicari, A.P. and Zlotnik, A. 2000. Identification of a novel chemokine (CCL28), which binds CCR10 (GPR2). *J. Biol. Chem.* 275: 22313-22323.
2. Hieshima, K., Ohtani, H., Shibano, M., Izawa, D., Nakayama, T., Kawasaki, Y., Shiba, F., Shiota, M., Katou, F., Saito, T. and Yoshie, O. 2003. CCL28 has dual roles in mucosal immunity as a chemokine with broad-spectrum antimicrobial activity. *J. Immunol.* 170: 1452-1461.
3. Lazarus, N.H., Kunkel, E.J., Johnston, B., Wilson, E., Youngman, K.R. and Butcher, E.C. 2003. A common mucosal chemokine (mucosae-associated epithelial chemokine/CCL28) selectively attracts IgA plasmablasts. *J. Immunol.* 170: 3799-3805.
4. Wilson, E. and Butcher, E.C. 2004. CCL28 controls immunoglobulin (Ig)A plasma cell accumulation in the lactating mammary gland and IgA antibody transfer to the neonate. *J. Exp. Med.* 200: 805-809.
5. Hanamoto, H., Nakayama, T., Miyazato, H., Takegawa, S., Hieshima, K., Tatsumi, Y., Kanamaru, A. and Yoshie, O. 2004. Expression of CCL28 by Reed-Sternberg cells defines a major subtype of classical Hodgkin's disease with frequent infiltration of eosinophils and/or plasma cells. *Am. J. Pathol.* 164: 997-1006.
6. SWISS-PROT/TrEMBL (Q9NRJ3). World Wide Web URL: <http://www.expasy.ch/sprot/sprot-top.html>

CHROMOSOMAL LOCATION

Genetic locus: Ccl28 (mouse) mapping to 13.

PRODUCT

CCL28 (m): 293T Lysate represents a lysate of mouse CCL28 transfected 293T cells and is provided as 100 µg protein in 200 µl SDS-PAGE buffer.

STORAGE

Store at -20° C. Repeated freezing and thawing should be minimized. Sample vial should be boiled once prior to use. Non-hazardous. No MSDS required.

PROTOCOLS

See our web site at www.scbt.com for detailed protocols and support products.

APPLICATIONS

CCL28 (m): 293T Lysate is suitable as a Western Blotting positive control for mouse reactive CCL28 antibodies. Recommended use: 10-20 µl per lane.

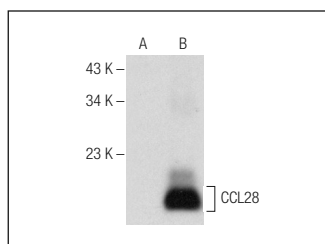
Control 293T Lysate: sc-117752 is available as a Western Blotting negative control lysate derived from non-transfected 293T cells.

CCL28 (G-2): sc-376654 is recommended as a positive control antibody for Western Blot analysis of enhanced mouse CCL28 expression in CCL28 transfected 293T cells (starting dilution 1:100, dilution range 1:100-1:1,000).

RECOMMENDED SUPPORT REAGENTS

To ensure optimal results, the following support reagents are recommended:
 1) Western Blotting: use m-IgGκ BP-HRP: sc-516102 or m-IgGκ BP-HRP (Cruz Marker): sc-516102-CM (dilution range: 1:1000-1:10000), Cruz Marker™ Molecular Weight Standards: sc-2035, UltraCruz® Blocking Reagent: sc-516214 and Western Blotting Luminol Reagent: sc-2048.

DATA



CCL28 (G-2): sc-376654. Western blot analysis of CCL28 expression in non-transfected: sc-117752 (A) and mouse CCL28 transfected: sc-119084 (B) 293T whole cell lysates

RESEARCH USE

For research use only, not for use in diagnostic procedures.