



SZABO SCANDIC

Part of Europa Biosite

Produktinformation



Forschungsprodukte & Biochemikalien



Zellkultur & Verbrauchsmaterial



Diagnostik & molekulare Diagnostik



Laborgeräte & Service

Weitere Information auf den folgenden Seiten!
See the following pages for more information!



Lieferung & Zahlungsart

siehe unsere [Liefer- und Versandbedingungen](#)

Zuschläge

- Mindermengenzuschlag
- Trockeneiszuschlag
- Gefahrgutzuschlag
- Expressversand

SZABO-SCANDIC HandelsgmbH

Quellenstraße 110, A-1100 Wien

T. +43(0)1 489 3961-0

F. +43(0)1 489 3961-7

mail@szabo-scandic.com

www.szabo-scandic.com

[linkedin.com/company/szaboscandic](https://www.linkedin.com/company/szaboscandic) 

CLIC1 (m): 293T Lysate: sc-119305

BACKGROUND

Chloride intracellular channel 1 (CLIC1), also referred to as NCC27, is a member of the highly conserved family of chloride ion channels that function in both soluble and integral membrane forms. CLIC1 is a monomeric protein that contains a redox-active site similar to glutaredoxin; it functions as an anion-selective channel. CLIC1 forms a dimer when oxidized and is then able to form chloride ion channels in bilayers and vesicles, whereas a reducing environment prevents this from occurring. Insulin concentration also plays a role in CLIC1 regulation, and the hormone may cause a subnuclear relocalization of CLIC1. CLIC1 is associated with macrophage activation; a downregulation of CLIC1 function prevents TNF α release induced by β -Amyloid protein (A- β) stimulation. This suggests a role for CLIC1 in several neurodegenerative processes, such as Alzheimer's disease, a syndrome characterized by an accumulation of β -Amyloid.

REFERENCES

- Harrop, S.J., DeMaere, M.Z., Fairlie, W.D., Reztsova, T., Valenzuela, S.M., Mazzanti, M., Tonini, R., Qiu, M.R., Jankova, L., Warton, K., Bauskin, A.R., Wu, W.M., Pankhurst, S., Campbell, T.J., Breit, S.N. and Curmi, P.M. 2001. Crystal structure of a soluble form of the intracellular chloride ion channel CLIC1 (NCC27) at 1.4-Å resolution. *J. Biol. Chem.* 276: 44993-45000.
- Tulk, B.M., Kapadia, S. and Edwards, J.C. 2002. CLIC1 inserts from the aqueous phase into phospholipid membranes, where it functions as an anion channel. *Am. J. Physiol., Cell Physiol.* 282: C1103-C1112.
- Warton, K., Tonini, R., Fairlie, W.D., Matthews, J.M., Valenzuela, S.M., Qiu, M.R., Wu, W.M., Pankhurst, S., Bauskin, A.R., Harrop, S.J., Campbell, T.J., Curmi, P.M., Breit, S.N. and Mazzanti, M. 2002. Recombinant CLIC1 (NCC27) assembles in lipid bilayers via a pH-dependent two-state process to form chloride ion channels with identical characteristics to those observed in Chinese hamster ovary cells expressing CLIC1. *J. Biol. Chem.* 277: 26003-26011.
- Littler, D.R., Harrop, S.J., Fairlie, W.D., Brown, L.J., Pankhurst, G.J., Pankhurst, S., DeMaere, M.Z., Campbell, T.J., Bauskin, A.R., Tonini, R., Mazzanti, M., Breit, S.N. and Curmi, P.M. 2004. The intracellular chloride ion channel protein CLIC1 undergoes a redox-controlled structural transition. *J. Biol. Chem.* 279: 9298-9305.
- Myers, K., Somanath, P.R., Berryman, M. and Vijayaraghavan, S. 2004. Identification of chloride intracellular channel proteins in spermatozoa. *FEBS Lett.* 566: 136-140.
- Novarino, G., Fabrizi, C., Tonini, R., Denti, M.A., Malchiodi-Albedi, F., Lauro, G.M., Sacchetti, B., Paradisi, S., Ferroni, A., Curmi, P.M., Breit, S.N. and Mazzanti, M. 2004. Involvement of the intracellular ion channel CLIC1 in microglia-media neurotoxicity. *J. Neurosci.* 24: 5322-5330.
- Saeki, K., Yasugi, E., Okuma, E., Breit, S.N., Nakamura, M., Toda, T., Kaburagi, Y. and Yuo, A. 2005. Proteomic analysis on Insulin signaling in human hematopoietic cells: identification of CLIC1 and SRp20 as novel downstream effectors of Insulin. *Am. J. Physiol. Endocrinol. Metab.* 289: E419-E428.
- Berry, K.L. and Hobert, O. 2006. Mapping functional domains of chloride intracellular *in vivo*. *J. Mol. Biol.* 359: 1316-1333.

CHROMOSOMAL LOCATION

Genetic locus: Clc1 (mouse) mapping to 17 B1.

PRODUCT

CLIC1 (m): 293T Lysate represents a lysate of mouse CLIC1 transfected 293T cells and is provided as 100 μ g protein in 200 μ l SDS-PAGE buffer.

APPLICATIONS

CLIC1 (m): 293T Lysate is suitable as a Western Blotting positive control for mouse reactive CLIC1 antibodies. Recommended use: 10-20 μ l per lane.

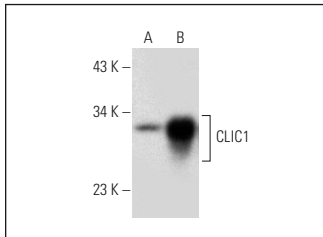
Control 293T Lysate: sc-117752 is available as a Western Blotting negative control lysate derived from non-transfected 293T cells.

CLIC1 (B-5): sc-271051 is recommended as a positive control antibody for Western Blot analysis of enhanced mouse CLIC1 expression in CLIC1 transfected 293T cells (starting dilution 1:100, dilution range 1:100-1:1,000).

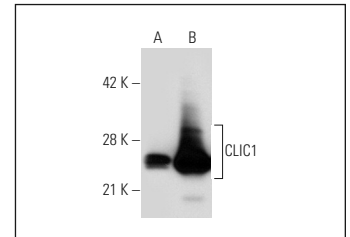
RECOMMENDED SUPPORT REAGENTS

To ensure optimal results, the following support reagents are recommended:
 1) Western Blotting: use m-IgG κ BP-HRP: sc-516102 or m-IgG κ BP-HRP (Cruz Marker): sc-516102-CM (dilution range: 1:1000-1:10000), Cruz Marker™ Molecular Weight Standards: sc-2035, UltraCruz® Blocking Reagent: sc-516214 and Western Blotting Luminol Reagent: sc-2048.

DATA



CLIC1 (B-5): sc-271051. Western blot analysis of CLIC1 expression in non-transfected: sc-117752 (A) and mouse CLIC1 transfected: sc-119305 (B) 293T whole cell lysates.



CLIC1 (356.1): sc-81873. Western blot analysis of CLIC1 expression in non-transfected: sc-117752 (A) and mouse CLIC1 transfected: sc-119305 (B) 293T whole cell lysates.

STORAGE

Store at -20° C. Repeated freezing and thawing should be minimized. Sample vial should be boiled once prior to use. Non-hazardous. No MSDS required.

RESEARCH USE

For research use only, not for use in diagnostic procedures.

PROTOCOLS

See our web site at www.scbt.com for detailed protocols and support products.