



# SZABO SCANDIC

Part of Europa Biosite

## Produktinformation



Forschungsprodukte & Biochemikalien



Zellkultur & Verbrauchsmaterial



Diagnostik & molekulare Diagnostik



Laborgeräte & Service

Weitere Information auf den folgenden Seiten!  
See the following pages for more information!



### Lieferung & Zahlungsart

siehe unsere [Liefer- und Versandbedingungen](#)

### Zuschläge

- Mindermengenzuschlag
- Trockeneiszuschlag
- Gefahrgutzuschlag
- Expressversand

### SZABO-SCANDIC HandelsgmbH

Quellenstraße 110, A-1100 Wien

T. +43(0)1 489 3961-0

F. +43(0)1 489 3961-7

[mail@szabo-scandic.com](mailto:mail@szabo-scandic.com)

[www.szabo-scandic.com](http://www.szabo-scandic.com)

[linkedin.com/company/szaboscandic](https://www.linkedin.com/company/szaboscandic) 

# COASTER (m): 293T Lysate: sc-119351

## BACKGROUND

COASTER (coactivator for steroid receptors), also known as ZNF451 (zinc finger protein 451), is a 1,061 amino acid nuclear protein that belongs to the Krüppel C<sub>2</sub>H<sub>2</sub>-type zinc-finger protein family and acts as a coactivator for steroid receptors. Thought to play a role in transcriptional regulation, COASTER contains eleven C<sub>2</sub>H<sub>2</sub>-type zinc fingers and exists as three alternatively spliced isoforms. The gene encoding COASTER maps to human chromosome 6, which contains 170 million base pairs and comprises nearly 6% of the human genome. Deletion of a portion of the q arm of chromosome 6 is associated with early onset intestinal cancer, suggesting the presence of a cancer susceptibility locus. Additionally, Porphyria cutanea tarda, Parkinson's disease, Stickler syndrome and a susceptibility to bipolar disorder are all associated with genes that map to chromosome 6.

## REFERENCES

1. Brunner, H.G., van Beersum, S.E., Warman, M.L., Olsen, B.R., Ropers, H.H. and Mariman, E.C. 1994. A Stickler syndrome gene is linked to chromosome 6 near the COL11A2 gene. *Hum. Mol. Genet.* 3: 1561-1564.
2. Cesari, R., Martin, E.S., Calin, G.A., Pentimalli, F., Bichi, R., McAdams, H., Trapasso, F., Drusco, A., Shimizu, M., Masciullo, V., D'Andrilli, G., Scambia, G., Picchio, M.C., Alder, H., Godwin, A.K. and Croce, C.M. 2003. Parkin, a gene implicated in autosomal recessive juvenile parkinsonism, is a candidate tumor suppressor gene on chromosome 6q25-q27. *Proc. Natl. Acad. Sci. USA* 100: 5956-5961.
3. Vuoristo, M.M., Pappas, J.G., Jansen, V. and Ala-Kokko, L. 2004. A stop codon mutation in COL11A2 induces exon skipping and leads to non-ocular Stickler syndrome. *Am. J. Med. Genet. A* 130A: 160-164.
4. Park, E., Kim, S., Kim, S.J., Park, Y., Lee, J.S., Yoo, J.C., Kim, C.S., Kim do, K., Lee, S.Y. and Chun, H.S. 2007. Modulation of parkin gene expression in noradrenergic neuronal cells. *Int. J. Dev. Neurosci.* 25: 491-497.
5. Bläker, H., Mechttersheimer, G., Sutter, C., Hertkorn, C., Kern, M.A., Rieker, R.J., Penzel, R., Schirmacher, P. and Kloor, M. 2008. Recurrent deletions at 6q in early age of onset non-HNPCC- and non-FAP-associated intestinal carcinomas. Evidence for a novel cancer susceptibility locus at 6q14-q22. *Genes Chromosomes Cancer* 47: 159-164.
6. Karvonen, U., Jääskeläinen, T., Rytinki, M., Kaikkonen, S. and Palvimo, J.J. 2008. ZNF451 is a novel PML body- and SUMO-associated transcriptional coregulator. *J. Mol. Biol.* 382: 585-600.
7. Jalil, S., Grady, J.J., Lee, C. and Anderson, K.E. 2010. Associations among behavior-related susceptibility factors in porphyria cutanea tarda. *Clin. Gastroenterol. Hepatol.* 8: 297-302, 302.e1.

## CHROMOSOMAL LOCATION

Genetic locus: Zfp451 (mouse) mapping to 1 B.

## PRODUCT

COASTER (m): 293T Lysate represents a lysate of mouse COASTER transfected 293T cells and is provided as 100 µg protein in 200 µl SDS-PAGE buffer.

## APPLICATIONS

COASTER (m): 293T Lysate is suitable as a Western Blotting positive control for mouse reactive COASTER antibodies. Recommended use: 10-20 µl per lane.

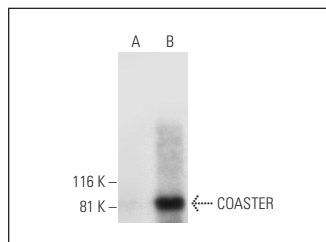
Control 293T Lysate: sc-117752 is available as a Western Blotting negative control lysate derived from non-transfected 293T cells.

COASTER (A-6): sc-393360 is recommended as a positive control antibody for Western Blot analysis of enhanced mouse COASTER expression in COASTER transfected 293T cells (starting dilution 1:100, dilution range 1:100-1:1,000).

## RECOMMENDED SUPPORT REAGENTS

To ensure optimal results, the following support reagents are recommended:  
 1) Western Blotting: use m-IgGκ BP-HRP: sc-516102 or m-IgGκ BP-HRP (Cruz Marker): sc-516102-CM (dilution range: 1:1000-1:10000), Cruz Marker™ Molecular Weight Standards: sc-2035, UltraCruz® Blocking Reagent: sc-516214 and Western Blotting Luminol Reagent: sc-2048.

## DATA



COASTER (A-6): sc-393360. Western blot analysis of COASTER expression in non-transfected: sc-117752 (A) and mouse COASTER transfected: sc-119351 (B) 293T whole cell lysates.

## STORAGE

Store at -20° C. Repeated freezing and thawing should be minimized. Sample vial should be boiled once prior to use. Non-hazardous. No MSDS required.

## RESEARCH USE

For research use only, not for use in diagnostic procedures.

## PROTOCOLS

See our web site at [www.scbt.com](http://www.scbt.com) for detailed protocols and support products.