



# SZABO SCANDIC

Part of Europa Biosite

## Produktinformation



Forschungsprodukte & Biochemikalien



Zellkultur & Verbrauchsmaterial



Diagnostik & molekulare Diagnostik



Laborgeräte & Service

Weitere Information auf den folgenden Seiten!  
See the following pages for more information!



### Lieferung & Zahlungsart

siehe unsere [Liefer- und Versandbedingungen](#)

### Zuschläge

- Mindermengenzuschlag
- Trockeneiszuschlag
- Gefahrgutzuschlag
- Expressversand

### SZABO-SCANDIC HandelsgmbH

Quellenstraße 110, A-1100 Wien

T. +43(0)1 489 3961-0

F. +43(0)1 489 3961-7

[mail@szabo-scandic.com](mailto:mail@szabo-scandic.com)

[www.szabo-scandic.com](http://www.szabo-scandic.com)

[linkedin.com/company/szaboscandic](https://www.linkedin.com/company/szaboscandic) 

# CRTAP (m): 293T Lysate: sc-119475

## BACKGROUND

CRTAP (cartilage associated protein), also known as CASP or LEPREL3 (leprecan-like 3), is a secreted protein localizing to the extracellular space that plays a role in collagen post-translational modifications, extracellular fibril assembly and intracellular trafficking. CRTAP is widely expressed with predominant expression in articular chondrocytes. It contains a signal peptide and a tetra-ricopeptide-like helical domain and is essential for normal bone formation. In the endoplasmic reticulum (ER), CRTAP forms a complex with Gros1 and CyPB (cyclophilin B) and is required for the efficient 3-hydroxylation of target prolyl residues in collagen type I molecules, the major structural proteins of skin and bone. Mutations in the gene encoding CRTAP can lead to autosomal recessive osteogenesis imperfecta (OI) type 7 and type 2B. OI, also known as brittle bone disease, is characterized by bone fragility and susceptibility to fractures. OI type 7 is a mild form of this disorder, while OI type 2B is a neonatal lethal condition.

## REFERENCES

1. Castagnola, P., Gennari, M., Morello, R., Tonachini, L., Marin, O., Gaggero, A. and Cancedda, R. 1997. Cartilage associated protein (CASP) is a novel developmentally regulated chick embryo protein. *J. Cell Sci.* 110: 1351-1359.
2. Morello, R., Tonachini, L., Monticone, M., Viggiano, L., Rocchi, M., Cancedda, R. and Castagnola, P. 1999. cDNA cloning, characterization and chromosome mapping of Crtp encoding the mouse cartilage associated protein. *Matrix Biol.* 18: 319-324.
3. Tonachini, L., Morello, R., Monticone, M., Skaug, J., Scherer, S.W., Cancedda, R. and Castagnola, P. 1999. cDNA cloning, characterization and chromosome mapping of the gene encoding human cartilage associated protein (CRTAP). *Cytogenet. Cell Genet.* 87: 191-194.
4. Barnes, A.M., Chang, W., Morello, R., Cabral, W.A., Weis, M., Eyre, D.R., Leikin, S., Makareeva, E., Kuznetsova, N., Uveges, T.E., Ashok, A., Flor, A.W., Mulvihill, J.J., Wilson, P.L., et al. 2006. Deficiency of cartilage-associated protein in recessive lethal osteogenesis imperfecta. *N. Engl. J. Med.* 355: 2757-2764.
5. Morello, R., Bertin, T.K., Chen, Y., Hicks, J., Tonachini, L., Monticone, M., Castagnola, P., Rauch, F., Glorieux, F.H., Vranka, J., Bächinger, H.P., Pace, J.M., Schwarze, U., Byers, P.H., et al. 2006. CRTAP is required for prolyl 3-hydroxylation and mutations cause recessive osteogenesis imperfecta. *Cell* 127: 291-304.
6. Martin, E. and Shapiro, J.R. 2007. Osteogenesis imperfecta: epidemiology and pathophysiology. *Curr. Osteoporos. Rep.* 5: 91-97.
7. Kwan, T., Benovoy, D., Dias, C., Gurd, S., Serre, D., Zuzan, H., Clark, T.A., Schweitzer, A., Staples, M.K., Wang, H., Blume, J.E., Hudson, T.J., Sladek, R. and Majewski, J. 2007. Heritability of alternative splicing in the human genome. *Genome Res.* 17: 1210-1218.

## CHROMOSOMAL LOCATION

Genetic locus: Crtp (mouse) mapping to 9 F3.

## RESEARCH USE

For research use only, not for use in diagnostic procedures.

## PRODUCT

CRTAP (m): 293T Lysate represents a lysate of mouse CRTAP transfected 293T cells and is provided as 100 µg protein in 200 µl SDS-PAGE buffer.

## APPLICATIONS

CRTAP (m): 293T Lysate is suitable as a Western Blotting positive control for mouse reactive CRTAP antibodies. Recommended use: 10-20 µl per lane.

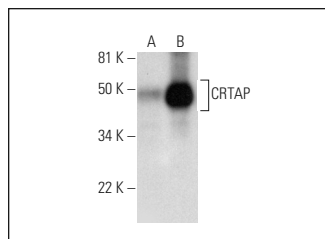
Control 293T Lysate: sc-117752 is available as a Western Blotting negative control lysate derived from non-transfected 293T cells.

CRTAP (E-1): sc-393136 is recommended as a positive control antibody for Western Blot analysis of enhanced mouse CRTAP expression in CRTAP transfected 293T cells (starting dilution 1:100, dilution range 1:100-1:1,000).

## RECOMMENDED SUPPORT REAGENTS

To ensure optimal results, the following support reagents are recommended:  
1) Western Blotting: use m-IgGκ BP-HRP: sc-516102 or m-IgGκ BP-HRP (Cruz Marker): sc-516102-CM (dilution range: 1:1000-1:10000), Cruz Marker™ Molecular Weight Standards: sc-2035, UltraCruz® Blocking Reagent: sc-516214 and Western Blotting Luminol Reagent: sc-2048.

## DATA



CRTAP (E-1): sc-393136. Western blot analysis of CRTAP expression in non-transfected: sc-117752 (A) and mouse CRTAP transfected: sc-119475 (B) 293T whole cell lysates.

## STORAGE

Store at -20° C. Repeated freezing and thawing should be minimized. Sample vial should be boiled once prior to use. Non-hazardous. No MSDS required.

## PROTOCOLS

See our web site at [www.scbt.com](http://www.scbt.com) for detailed protocols and support products.