



SZABO SCANDIC

Part of Europa Biosite

Produktinformation



Forschungsprodukte & Biochemikalien



Zellkultur & Verbrauchsmaterial



Diagnostik & molekulare Diagnostik



Laborgeräte & Service

Weitere Information auf den folgenden Seiten!
See the following pages for more information!



Lieferung & Zahlungsart

siehe unsere [Liefer- und Versandbedingungen](#)

Zuschläge

- Mindermengenzuschlag
- Trockeneiszuschlag
- Gefahrgutzuschlag
- Expressversand

SZABO-SCANDIC HandelsgmbH

Quellenstraße 110, A-1100 Wien

T. +43(0)1 489 3961-0

F. +43(0)1 489 3961-7

mail@szabo-scandic.com

www.szabo-scandic.com

[linkedin.com/company/szaboscandic](https://www.linkedin.com/company/szaboscandic) 

CTLA-4 (m): 293T Lysate: sc-119504

BACKGROUND

T cell proliferation and lymphokine production are triggered by occupation of the TCR by antigen, followed by a costimulatory signal that is delivered by a ligand expressed on antigen presenting cells. The B7-related cell surface proteins CD80 (B7-1) and CD86 (B7-2) are expressed on antigen presenting cells, bind the homologous T cell receptors CD28 and CTLA-4 (cytotoxic T lymphocyte-associated protein-4) and trigger costimulatory signals for optimal T cell activation. CTLA-4 shares 31% overall amino acid identity with CD28 and it has been proposed that CD28 and CTLA-4 are functionally redundant. SLAMF7 is a novel receptor on T cells that, when engaged, potentiates T cell expansion in a CD28-independent manner. B7, also designated BB1, is another ligand or counterreceptor for CD28 and CTLA-4 that is expressed on the antigen-presenting cell.

REFERENCES

- Freeman, G.J., et al. 1991. Structure, expression, and T cell costimulatory activity of the murine homologue of the human B lymphocyte activation antigen B7. *J. Exp. Med.* 174: 625-631.
- Schwartz, R.H. 1992. Costimulation of T lymphocytes: the role of CD28, CTLA-4, and B7/BB1 in interleukin-2 production and immunotherapy. *Cell* 71: 1065-1068.
- Peach, R.J., et al. 1995. Both extracellular immunoglobulin-like domains of CD80 contain residues critical for binding T cell surface receptors CTLA-4 and CD28. *J. Biol. Chem.* 270: 21181-21187.
- Fargeas, C.A., et al. 1995. Identification of residues in the V domain of CD80 (B7-1) implicated in functional interactions with CD28 and CTLA-4. *J. Exp. Med.* 182: 667-675.
- Gribben, J.G., et al. 1995. CTLA-4 mediates antigen-specific apoptosis of human T cells. *Proc. Natl. Acad. Sci. USA* 92: 811-815.
- Cocks, B.G., et al. 1995. A novel receptor involved in T cell activation. *Nature* 376: 260-263.
- Harlan, D.M., et al. 1995. Potential roles of the B7 and CD28 receptor families in autoimmunity and immune evasion. *Clin. Immunol. Immunopath.* 75: 99-111.

CHROMOSOMAL LOCATION

Genetic locus: *Ctla4* (mouse) mapping to 1 C2.

PRODUCT

CTLA-4 (m): 293T Lysate represents a lysate of mouse CTLA-4 transfected 293T cells and is provided as 100 µg protein in 200 µl SDS-PAGE buffer.

STORAGE

Store at -20° C. Repeated freezing and thawing should be minimized. Sample vial should be boiled once prior to use. Non-hazardous. No MSDS required.

PROTOCOLS

See our web site at www.scbt.com for detailed protocols and support products.

APPLICATIONS

CTLA-4 (m): 293T Lysate is suitable as a Western Blotting positive control for mouse reactive CTLA-4 antibodies. Recommended use: 10-20 µl per lane.

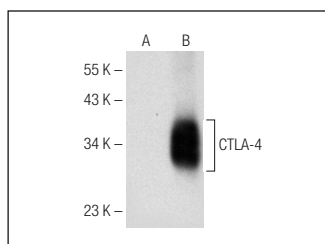
Control 293T Lysate: sc-117752 is available as a Western Blotting negative control lysate derived from non-transfected 293T cells.

CTLA-4 (F-8): sc-376016 is recommended as a positive control antibody for Western Blot analysis of enhanced mouse CTLA-4 expression in CTLA-4 transfected 293T cells (starting dilution 1:100, dilution range 1:100-1:1,000).

RECOMMENDED SUPPORT REAGENTS

To ensure optimal results, the following support reagents are recommended: 1) Western Blotting: use m-IgGκ BP-HRP: sc-516102 or m-IgGκ BP-HRP (Cruz Marker): sc-516102-CM (dilution range: 1:1000-1:10000), Cruz Marker™ Molecular Weight Standards: sc-2035, UltraCruz® Blocking Reagent: sc-516214 and Western Blotting Luminol Reagent: sc-2048.

DATA



CTLA-4 (F-8): sc-376016. Western blot analysis of CTLA-4 expression in non-transfected: sc-117752 (A) and mouse CTLA-4 transfected: sc-119504 (B) 293T whole cell lysates.

RESEARCH USE

For research use only, not for use in diagnostic procedures.