



SZABO SCANDIC

Part of Europa Biosite

Produktinformation



Forschungsprodukte & Biochemikalien



Zellkultur & Verbrauchsmaterial



Diagnostik & molekulare Diagnostik



Laborgeräte & Service

Weitere Information auf den folgenden Seiten!
See the following pages for more information!



Lieferung & Zahlungsart

siehe unsere [Liefer- und Versandbedingungen](#)

Zuschläge

- Mindermengenzuschlag
- Trockeneiszuschlag
- Gefahrgutzuschlag
- Expressversand

SZABO-SCANDIC HandelsgmbH

Quellenstraße 110, A-1100 Wien

T. +43(0)1 489 3961-0

F. +43(0)1 489 3961-7

mail@szabo-scandic.com

www.szabo-scandic.com

[linkedin.com/company/szaboscandic](https://www.linkedin.com/company/szaboscandic) 

Endophilin B1 (m): 293T Lysate: sc-120038

BACKGROUND

The endophilins comprise a family of proteins that associate with Amphiphysin, Synaptojanin and Dynamin and are implicated in presynaptic vesicle trafficking at nerve terminals. The expression patterns of the endophilins are consistent with their cellular functions at the neuronal synapse. Endophilin B1 is a member of the B subgroup of the endophilin family that is required for maintenance of mitochondrial morphology and for the regulation of the outer mitochondrial membrane dynamics. The N-terminal domain of Endophilin B1 shares highest similarity with the lipid-binding and -modifying (LBM) domain of class A endophilins. The Endophilin B1 gene encodes at least three splice variants: Endophilin B1a, which shows a widespread tissue distribution, and Endophilin B1b and B1c, which appear to be brain-specific.

REFERENCES

- Pierrat, B., et al. 2001. SH3GLB, a new Endophilin-related protein family featuring an SH3 domain. *Genomics* 71: 222-234.
- Modregger, J., et al. 2003. Characterization of Endophilin B1b, a brain-specific membrane-associated lysophosphatidic acid acyl transferase with properties distinct from Endophilin A1. *J. Biol. Chem.* 278: 4160-4167.
- Wang, M.Q., et al. 2003. Endophilins interact with Moloney murine leukemia virus Gag and modulate virion production. *J. Biol.* 3: 4.
- Engidawork, E., et al. 2003. Aberrant protein expression in cerebral cortex of fetus with Down syndrome. *Neuroscience* 122:145-154.
- Karbowski, M., et al. 2004. Endophilin B1 is required for the maintenance of mitochondrial morphology. *J. Cell Biol.* 166: 1027-1039.
- Takahashi, Y., et al. 2005. Loss of Bif-1 suppresses Bax/Bak conformational change and mitochondrial apoptosis. *Mol. Cell. Biol.* 25: 9369-9382.
- Aramaki, Y., et al. 2005. Direct interaction between metastasis-associated protein 1 and Endophilin 3. *FEBS Lett.* 579: 3731-3736.

CHROMOSOMAL LOCATION

Genetic locus: Sh3glb1 (mouse) mapping to 3 H2.

PRODUCT

Endophilin B1 (m): 293T Lysate represents a lysate of mouse Endophilin B1 transfected 293T cells and is provided as 100 µg protein in 200 µl SDS-PAGE buffer.

APPLICATIONS

Endophilin B1 (m): 293T Lysate is suitable as a Western Blotting positive control for mouse reactive Endophilin B1 antibodies. Recommended use: 10-20 µl per lane.

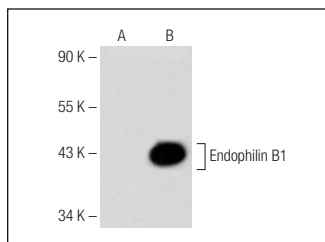
Control 293T Lysate: sc-117752 is available as a Western Blotting negative control lysate derived from non-transfected 293T cells.

Endophilin B1 (G-6): sc-374146 is recommended as a positive control antibody for Western Blot analysis of enhanced mouse Endophilin B1 expression in Endophilin B1 transfected 293T cells (starting dilution 1:100, dilution range 1:100-1:1,000).

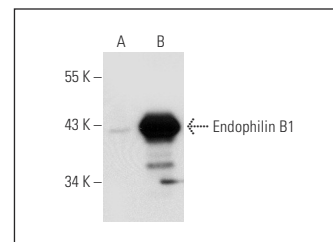
RECOMMENDED SUPPORT REAGENTS

To ensure optimal results, the following support reagents are recommended: 1) Western Blotting: use m-IgGκ BP-HRP: sc-516102 or m-IgGκ BP-HRP (Cruz Marker): sc-516102-CM (dilution range: 1:1000-1:10000), Cruz Marker™ Molecular Weight Standards: sc-2035, UltraCruz® Blocking Reagent: sc-516214 and Western Blotting Luminol Reagent: sc-2048.

DATA



Endophilin B1 (G-6): sc-374146. Western blot analysis of Endophilin B1 expression in non-transfected: sc-117752 (A) and mouse Endophilin B1 transfected: sc-120038 (B) 293T whole cell lysates.



Endophilin B1 (30A882): sc-52924. Western blot analysis of Endophilin B1 expression in non-transfected: sc-117752 (A) and mouse Endophilin B1 transfected: sc-120038 (B) 293T whole cell lysates.

STORAGE

Store at -20° C. Repeated freezing and thawing should be minimized. Sample vial should be boiled once prior to use. Non-hazardous. No MSDS required.

RESEARCH USE

For research use only, not for use in diagnostic procedures.

PROTOCOLS

See our web site at www.scbt.com for detailed protocols and support products.