



# SZABO SCANDIC

Part of Europa Biosite

## Produktinformation



Forschungsprodukte & Biochemikalien



Zellkultur & Verbrauchsmaterial



Diagnostik & molekulare Diagnostik



Laborgeräte & Service

Weitere Information auf den folgenden Seiten!  
See the following pages for more information!



### Lieferung & Zahlungsart

siehe unsere [Liefer- und Versandbedingungen](#)

### Zuschläge

- Mindermengenzuschlag
- Trockeneiszuschlag
- Gefahrgutzuschlag
- Expressversand

### SZABO-SCANDIC HandelsgmbH

Quellenstraße 110, A-1100 Wien

T. +43(0)1 489 3961-0

F. +43(0)1 489 3961-7

[mail@szabo-scandic.com](mailto:mail@szabo-scandic.com)

[www.szabo-scandic.com](http://www.szabo-scandic.com)

[linkedin.com/company/szaboscandic](https://www.linkedin.com/company/szaboscandic) 

# ERI-1 (m): 293T Lysate: sc-120103

## BACKGROUND

Helicase with RNase motif, more commonly designated Dicer, cleaves double-stranded RNA (dsRNA) in the RNA interference and small temporal RNA (stRNA) pathways, producing active small RNA components (siRNAs) which target the destruction of RNA and repress gene expression. Human Dicer cleaves dsRNA independent of ATP. The 3'-5' exonuclease ERI-1, also known as Protein 3'hExo, degrades histone mRNA after replication and may be involved in the regulation of RNA interference. ERI-1 has a high affinity for the stem-loop structure of replication-dependent histone pre-mRNAs. It requires the 5'-ACCCA-3' sequence present in stem-loop structure. ERI-1 and a stem-loop binding protein (SLBP) target opposite faces of a unique highly conserved stem-loop RNA scaffold towards the 3' end of histone mRNA.

## REFERENCES

- Kennedy, S., et al. 2004. A conserved siRNA-degrading RNase negatively regulates RNA interference in *C. elegans*. *Nature* 427: 645-649.
- Timmons, L. 2004. Endogenous inhibitors of RNA interference in *Caenorhabditis elegans*. *Bioessays* 26: 715-718.
- Sobering, A.K., et al. 2004. Yeast Ras regulates the complex that catalyzes the first step in GPI-anchor biosynthesis at the ER. *Cell* 117: 637-648.
- Hong, J., et al. 2005. High doses of siRNAs induce ERI-1 and ADAR1 gene expression and reduce the efficiency of RNA interference in the mouse. *Biochem. J.* 390: 675-679.
- Wang, D., et al. 2005. Somatic misexpression of germline P granules and enhanced RNA interference in retinoblastoma pathway mutants. *Nature* 436: 593-597.
- Wilkins, C., et al. 2005. RNA interference is an antiviral defence mechanism in *Caenorhabditis elegans*. *Nature* 436: 1044-1047.
- Zhang, J. 2005. Dampening the silencing effect of RNA interference in mammals. *Biochem. J.* 390: e5-e6.
- Duchaine, T.F., et al. 2006. Functional proteomics reveals the biochemical niche of *C. elegans* DcR1 in multiple small-RNA-mediated pathways. *Cell* 124: 343-354.
- Lee, R.C., et al. 2006. Interacting endogenous and exogenous RNAi pathways in *Caenorhabditis elegans*. *RNA* 12: 589-597.

## CHROMOSOMAL LOCATION

Genetic locus: Eri1 (mouse) mapping to 8 A4.

## PRODUCT

ERI-1 (m): 293T Lysate represents a lysate of mouse ERI-1 transfected 293T cells and is provided as 100 µg protein in 200 µl SDS-PAGE buffer.

## STORAGE

Store at -20° C. Repeated freezing and thawing should be minimized. Sample vial should be boiled once prior to use. Non-hazardous. No MSDS required.

## APPLICATIONS

ERI-1 (m): 293T Lysate is suitable as a Western Blotting positive control for mouse reactive ERI-1 antibodies. Recommended use: 10-20 µl per lane.

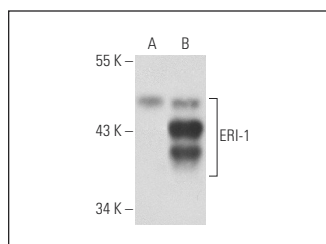
Control 293T Lysate: sc-117752 is available as a Western Blotting negative control lysate derived from non-transfected 293T cells.

ERI-1 (C-8): sc-137099 is recommended as a positive control antibody for Western Blot analysis of enhanced mouse ERI-1 expression in ERI-1 transfected 293T cells (starting dilution 1:100, dilution range 1:100-1:1,000).

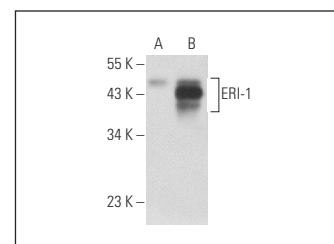
## RECOMMENDED SUPPORT REAGENTS

To ensure optimal results, the following support reagents are recommended:  
 1) Western Blotting: use m-IgGκ BP-HRP: sc-516102 or m-IgGκ BP-HRP (Cruz Marker): sc-516102-CM (dilution range: 1:1000-1:10000), Cruz Marker™ Molecular Weight Standards: sc-2035, UltraCruz® Blocking Reagent: sc-516214 and Western Blotting Luminol Reagent: sc-2048.

## DATA



ERI-1 (C-8): sc-137099. Western blot analysis of ERI-1 expression in non-transfected: sc-117752 (A) and mouse ERI-1 transfected: sc-120103 (B) 293T whole cell lysates.



ERI-1 (B-10): sc-137089. Western blot analysis of ERI-1 expression in non-transfected: sc-117752 (A) and mouse ERI-1 transfected: sc-120103 (B) 293T whole cell lysates.

## RESEARCH USE

For research use only, not for use in diagnostic procedures.

## PROTOCOLS

See our web site at [www.scbt.com](http://www.scbt.com) for detailed protocols and support products.