



SZABO SCANDIC

Part of Europa Biosite

Produktinformation



Forschungsprodukte & Biochemikalien



Zellkultur & Verbrauchsmaterial



Diagnostik & molekulare Diagnostik



Laborgeräte & Service

Weitere Information auf den folgenden Seiten!
See the following pages for more information!



Lieferung & Zahlungsart

siehe unsere [Liefer- und Versandbedingungen](#)

Zuschläge

- Mindermengenzuschlag
- Trockeneiszuschlag
- Gefahrgutzuschlag
- Expressversand

SZABO-SCANDIC HandelsgmbH

Quellenstraße 110, A-1100 Wien

T. +43(0)1 489 3961-0

F. +43(0)1 489 3961-7

mail@szabo-scandic.com

www.szabo-scandic.com

[linkedin.com/company/szaboscandic](https://www.linkedin.com/company/szaboscandic) 

Ets-1 (m): 293T Lysate: sc-120130

BACKGROUND

Ets-1 is the prototype member of a family of genes identified on the basis of homology to the v-Ets oncogene isolated from the E26 erythroblastosis virus. This family of genes currently includes Ets-1, Ets-2, Erg-1-3, Elk-1, Elf-1, Elf-5, NERF, PU.1, PEA3, ERM, FEV, ER81, Fli-1, TEL, Spi-B, ESE-1, ESE-3A, Net, ABT1 and ERF. Members of the Ets gene family exhibit varied patterns of tissue expression and share a highly conserved carboxy-terminal domain containing a sequence related to the SV40 large T antigen nuclear localization signal sequence. This conserved domain is essential for Ets-1 binding to DNA and is likely to be responsible for the DNA-binding activity of all members of the Ets gene family. Several of these proteins have been shown to recognize similar motifs in DNA that share a centrally located 5'-GGAA-3' element. Evidence indicates that the DNA-binding activity by Ets-1 is regulated at the level of phosphorylation.

REFERENCES

1. Ghysdael, J., et al. 1986. Identification and preferential expression in thymic and bursal lymphocytes of a c-Ets oncogene-encoded M_r 54,000 cytoplasmic protein. *Proc. Natl. Acad. Sci. USA* 83: 1714-1718.
2. Rao, V.N., et al. 1987. erg, a human ets-related gene on chromosome 21: alternative splicing, polyadenylation and translation. *Science* 237: 635-639.
3. Rao, V.N., et al. 1989. Elk, tissue-specific Ets-related genes on chromosomes X and 14 near translocation breakpoints. *Science* 244: 66-70.
4. Burtis, K.C., et al. 1990. The *Drosophila* 74EF early puff contains E74, a complex ecdysone-inducible gene that encodes two Ets-related proteins. *Cell* 61: 85-99.
5. Xin, J.H., et al. 1992. Molecular cloning and characterization of PEA3, a new member of the Ets oncogene family that is differentially expressed in mouse embryonic cells. *Genes Dev.* 6: 481-496.
6. Pongubala, J.M., et al. 1993. Effect of PU.1 phosphorylation on interaction with NF-EM5 and transcriptional activation. *Science* 259: 1622-1625.

CHROMOSOMAL LOCATION

Genetic locus: Ets1 (mouse) mapping to 9 A4.

PRODUCT

Ets-1 (m): 293T Lysate represents a lysate of mouse Ets-1 transfected 293T cells and is provided as 100 µg protein in 200 µl SDS-PAGE buffer.

APPLICATIONS

Ets-1 (m): 293T Lysate is suitable as a Western Blotting positive control for mouse reactive Ets-1 antibodies. Recommended use: 10-20 µl per lane.

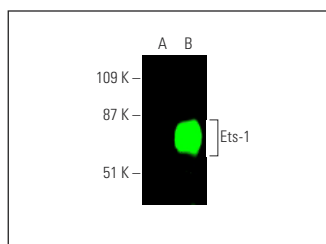
Control 293T Lysate: sc-117752 is available as a Western Blotting negative control lysate derived from non-transfected 293T cells.

Ets-1 (C-4): sc-55581 is recommended as a positive control antibody for Western Blot analysis of enhanced human Ets-1 expression in Ets-1 transfected Ets-1 cells (starting dilution 1:100, dilution range 1:100-1:1,000).

RECOMMENDED SUPPORT REAGENTS

To ensure optimal results, the following support reagents are recommended:
 1) Western Blotting: use m-IgGκ BP-HRP: sc-516102 or m-IgGκ BP-HRP (Cruz Marker): sc-516102-CM (dilution range: 1:1000-1:10000), Cruz Marker™ Molecular Weight Standards: sc-2035, UltraCruz® Blocking Reagent: sc-516214 and Western Blotting Luminol Reagent: sc-2048.

DATA



Ets-1 (C-4): sc-55581. Near-infrared western blot analysis of Ets-1 expression in non-transfected: sc-117752 (A) and mouse Ets-1 transfected: sc-120130 (B) 293T whole cell lysates. Blocked with UltraCruz® Blocking Reagent: sc-516214. Detection reagent used: m-IgGκ BP-CFL 680: sc-516180.

STORAGE

Store at -20° C. Repeated freezing and thawing should be minimized. Sample vial should be boiled once prior to use. Non-hazardous. No MSDS required.

RESEARCH USE

For research use only, not for use in diagnostic procedures.

PROTOCOLS

See our web site at www.scbt.com for detailed protocols and support products.