



SZABO SCANDIC

Part of Europa Biosite

Produktinformation



Forschungsprodukte & Biochemikalien



Zellkultur & Verbrauchsmaterial



Diagnostik & molekulare Diagnostik



Laborgeräte & Service

Weitere Information auf den folgenden Seiten!
See the following pages for more information!



Lieferung & Zahlungsart

siehe unsere [Liefer- und Versandbedingungen](#)

Zuschläge

- Mindermengenzuschlag
- Trockeneiszuschlag
- Gefahrgutzuschlag
- Expressversand

SZABO-SCANDIC HandelsgmbH

Quellenstraße 110, A-1100 Wien

T. +43(0)1 489 3961-0

F. +43(0)1 489 3961-7

mail@szabo-scandic.com

www.szabo-scandic.com

[linkedin.com/company/szaboscandic](https://www.linkedin.com/company/szaboscandic) 

Ets-2 (m): 293T Lysate: sc-120131

BACKGROUND

Ets-1 is the prototype member of a family of genes identified on the basis of homology to the v-Ets oncogene isolated from the E26 erythroblastosis virus. This family of genes currently includes Ets-1, Ets-2, Erg-1-3, Elk-1, Elf-1, Elf-5, NERF, PU.1, PEA3, ERM, FEV, ER81, Fli-1, TEL, Spi-B, ESE-1, ESE-3A, Net, ABT1 and ERF. Members of the Ets gene family exhibit varied patterns of tissue expression and share a highly conserved carboxy-terminal domain containing a sequence related to the SV40 large T antigen nuclear localization signal sequence. This conserved domain is essential for Ets-1 binding to DNA and is likely to be responsible for the DNA binding activity of all members of the Ets gene family. Several of these proteins have been shown to recognize similar motifs in DNA that share a centrally located 5'-GGAA-3' element. Evidence indicates that the DNA binding activity by Ets-1 is regulated at the level of phosphorylation.

REFERENCES

1. Ghysdael, J., et al. 1986. Identification and preferential expression in thymic and bursal lymphocytes of a c-Ets oncogene-encoded Mr 54,000 cytoplasmic protein. *Proc. Natl. Acad. Sci. USA* 83: 1714-1718.
2. Rao, V.N., et al. 1987. Erg, a human Ets-related gene on chromosome 21: alternative splicing, polyadenylation, and translation. *Science* 237: 635-639.
3. Rao, V.N., et al. 1989. Elk, tissue-specific Ets-related genes on chromosomes X and 14 near translocation breakpoints. *Science* 244: 66-70.
4. Burtis, K.C., et al. 1990. The *Drosophila* 74EF early puff contains E74, a complex ecdysone-inducible gene that encodes two Ets-related proteins. *Cell* 61: 85-99.
5. Xin, J.H., et al. 1992. Molecular cloning and characterization of PEA3, a new member of the Ets oncogene family that is differentially expressed in mouse embryonic cells. *Genes Dev.* 6: 481-496.
6. Kola, I., et al. 1993. The Ets1 transcription factor is widely expressed during murine embryo development and is associated with mesodermal cells involved in morphogenetic processes such as organ formation. *Proc. Natl. Acad. Sci. USA* 90: 7588-7592.
7. Pongubala, J.M.R., et al. 1993. Effect of PU.1 phosphorylation on interaction with NF-EM5 and transcriptional activation. *Science* 259: 1622-1625.
8. Zhu, J.D., et al. 2006. Transcription of the putative tumor suppressor gene HCCS1 requires binding of ETS-2 to its consensus near the transcription start site. *Cell Res.* 16: 780-796.
9. Chakrabarty, A., et al. 2007. Ets-2 and C/EBP- β are important mediators of ovine trophoblast Kunitz domain protein-1 gene expression in trophoblast. *BMC Mol. Biol.* 8:14.

CHROMOSOMAL LOCATION

Genetic locus: Ets2 (mouse) mapping to 16 C4.

PRODUCT

Ets-2 (m): 293T Lysate represents a lysate of mouse Ets-2 transfected 293T cells and is provided as 100 μ g protein in 200 μ l SDS-PAGE buffer.

APPLICATIONS

Ets-2 (m): 293T Lysate is suitable as a Western Blotting positive control for mouse reactive Ets-2 antibodies. Recommended use: 10-20 μ l per lane.

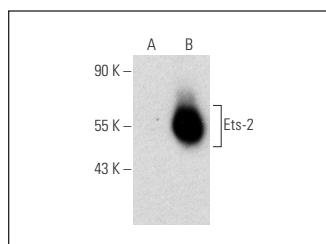
Control 293T Lysate: sc-117752 is available as a Western Blotting negative control lysate derived from non-transfected 293T cells.

Ets-2 (E-5): sc-365666 is recommended as a positive control antibody for Western Blot analysis of enhanced mouse Ets-2 expression in Ets-2 transfected 293T cells (starting dilution 1:100, dilution range 1:100-1:1,000).

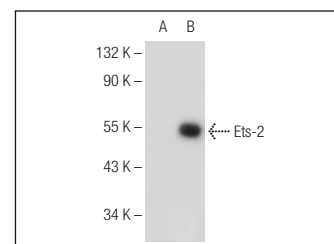
RECOMMENDED SUPPORT REAGENTS

To ensure optimal results, the following support reagents are recommended: 1) Western Blotting: use m-IgG κ BP-HRP: sc-516102 or m-IgG κ BP-HRP (Cruz Marker): sc-516102-CM (dilution range: 1:1000-1:10000), Cruz Marker[™] Molecular Weight Standards: sc-2035, UltraCruz[®] Blocking Reagent: sc-516214 and Western Blotting Luminol Reagent: sc-2048.

DATA



Ets-2 (E-5): sc-365666. Western blot analysis of Ets-2 expression in non-transfected: sc-117752 (A) and mouse Ets-2 transfected: sc-120131 (B) 293T whole cell lysates.



Ets-2 (F-4): sc-373754. Western blot analysis of Ets-2 expression in non-transfected: sc-117752 (A) and mouse Ets-2 transfected: sc-120131 (B) 293T whole cell lysates.

STORAGE

Store at -20° C. Repeated freezing and thawing should be minimized. Sample vial should be boiled once prior to use. Non-hazardous. No MSDS required.

RESEARCH USE

For research use only, not for use in diagnostic procedures.

PROTOCOLS

See our web site at www.scbt.com for detailed protocols and support products.