



SZABO SCANDIC

Part of Europa Biosite

Produktinformation



Forschungsprodukte & Biochemikalien



Zellkultur & Verbrauchsmaterial



Diagnostik & molekulare Diagnostik



Laborgeräte & Service

Weitere Information auf den folgenden Seiten!
See the following pages for more information!



Lieferung & Zahlungsart

siehe unsere [Liefer- und Versandbedingungen](#)

Zuschläge

- Mindermengenzuschlag
- Trockeneiszuschlag
- Gefahrgutzuschlag
- Expressversand

SZABO-SCANDIC HandelsgmbH

Quellenstraße 110, A-1100 Wien

T. +43(0)1 489 3961-0

F. +43(0)1 489 3961-7

mail@szabo-scandic.com

www.szabo-scandic.com

[linkedin.com/company/szaboscandic](https://www.linkedin.com/company/szaboscandic) 

FAM26F (m): 293T Lysate: sc-120179

BACKGROUND

Making up nearly 6% of the human genome, chromosome 6 contains around 1,200 genes within 170 million base pairs of sequence. Deletion of a portion of the q arm of chromosome 6 is associated with early onset intestinal cancer suggesting the presence of a cancer susceptibility locus. Porphyria cutanea tarda is associated with chromosome 6 through the HFE gene which, when mutated, predisposes an individual to developing this porphyria. Notably, the PARK2 gene, which is associated with Parkinson's disease, and the genes encoding the major histocompatibility complex proteins, which are key molecular components of the immune system and determine predisposition to rheumatic diseases, are also located on chromosome 6. Stickler syndrome, 21-hydroxylase deficiency and maple syrup urine disease are also associated with genes on chromosome 6. A bipolar disorder susceptibility locus has been identified on the q arm of chromosome 6. The FAM26F gene product has been provisionally designated FAM26F pending further characterization.

REFERENCES

- Mungall, A.J., Palmer, S.A., Sims, S.K., Edwards, C.A., Ashurst, J.L., Wilming, L., Jones, M.C., Horton, R., Hunt, S.E., Scott, C.E., Gilbert, J.G., Clamp, M.E., et al. 2003. The DNA sequence and analysis of human chromosome 6. *Nature* 425: 805-811.
- Vuoristo, M.M., Pappas, J.G., Jansen, V. and Ala-Kokko, L. 2004. A stop codon mutation in COL11A2 induces exon skipping and leads to non-ocular Stickler syndrome. *Am. J. Med. Genet. A* 130A: 160-164.
- McQueen, M.B., Devlin, B., Faraone, S.V., Nimgaonkar, V.L., Sklar, P., Smoller, J.W., Abou Jamra, R., Albus, M., et al. 2005. Combined analysis from eleven linkage studies of bipolar disorder provides strong evidence of susceptibility loci on chromosomes 6q and 8q. *Am. J. Hum. Genet.* 77: 582-595.
- Batts, K.P. 2007. Iron overload syndromes and the liver. *Mod. Pathol.* 20: S31-S39.
- Olsson, K.S., Ritter, B. and Hansson, N. 2007. The HLA-A1-B8 haplotype hitchhiking with the hemochromatosis mutation: does it affect the phenotype? *Eur. J. Haematol.* 79: 429-434.
- Park, E., Kim, S., Kim, S.J., Park, Y., Lee, J.S., Yoo, J.C., Kim, C.S., Kim do, K., Lee, S.Y. and Chun, H.S. 2007. Modulation of parkin gene expression in noradrenergic neuronal cells. *Int. J. Dev. Neurosci.* 25: 491-497.

CHROMOSOMAL LOCATION

Genetic locus: Fam26f (mouse) mapping to 10 B1.

PRODUCT

FAM26F (m): 293T Lysate represents a lysate of mouse FAM26F transfected 293T cells and is provided as 100 µg protein in 200 µl SDS-PAGE buffer.

STORAGE

Store at -20° C. Repeated freezing and thawing should be minimized. Sample vial should be boiled once prior to use. Non-hazardous. No MSDS required.

APPLICATIONS

FAM26F (m): 293T Lysate is suitable as a Western Blotting positive control for mouse reactive FAM26F antibodies. Recommended use: 10-20 µl per lane.

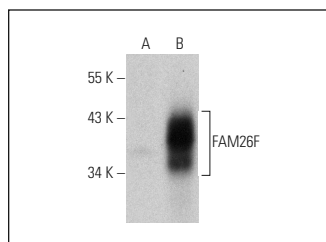
Control 293T Lysate: sc-117752 is available as a Western Blotting negative control lysate derived from non-transfected 293T cells.

FAM26F (G-12): sc-515780 is recommended as a positive control antibody for Western Blot analysis of enhanced mouse FAM26F expression in FAM26F transfected 293T cells (starting dilution 1:100, dilution range 1:100-1:1,000).

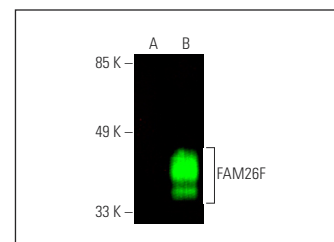
RECOMMENDED SUPPORT REAGENTS

To ensure optimal results, the following support reagents are recommended: 1) Western Blotting: use m-IgGκ BP-HRP: sc-516102 or m-IgGκ BP-HRP (Cruz Marker): sc-516102-CM (dilution range: 1:1000-1:10000), Cruz Marker™ Molecular Weight Standards: sc-2035, UltraCruz® Blocking Reagent: sc-516214 and Western Blotting Luminol Reagent: sc-2048.

DATA



FAM26F (G-12): sc-515780. Western blot analysis of FAM26F expression in non-transfected: sc-117752 (A) and mouse FAM26F transfected: sc-120179 (B) 293T whole cell lysates.



FAM26F (G-12): sc-515780. Near-infrared western blot analysis of FAM26F expression in non-transfected: sc-117752 (A) and mouse FAM26F transfected: sc-120179 (B) 293T whole cell lysates. Blocked with UltraCruz® Blocking Reagent: sc-516214. Detection reagent used: m-IgGκ BP-CFL 680: sc-516180.

RESEARCH USE

For research use only, not for use in diagnostic procedures.

PROTOCOLS

See our web site at www.scbt.com for detailed protocols and support products.