



SZABO SCANDIC

Part of Europa Biosite

Produktinformation



Forschungsprodukte & Biochemikalien



Zellkultur & Verbrauchsmaterial



Diagnostik & molekulare Diagnostik



Laborgeräte & Service

Weitere Information auf den folgenden Seiten!
See the following pages for more information!



Lieferung & Zahlungsart

siehe unsere [Liefer- und Versandbedingungen](#)

Zuschläge

- Mindermengenzuschlag
- Trockeneiszuschlag
- Gefahrgutzuschlag
- Expressversand

SZABO-SCANDIC HandelsgmbH

Quellenstraße 110, A-1100 Wien

T. +43(0)1 489 3961-0

F. +43(0)1 489 3961-7

mail@szabo-scandic.com

www.szabo-scandic.com

[linkedin.com/company/szaboscandic](https://www.linkedin.com/company/szaboscandic) 

GCKR (m): 293T Lysate: sc-120452

BACKGROUND

Glucokinase (also designated hexokinase IV or GCK) plays a key role in the regulation of glucose-induced Insulin secretion. GCK is expressed in pancreatic β cells, where it functions as a glucose sensor, determining the "set point" for Insulin secretion. GCK is also expressed in the liver, where it catalyzes the first step in the disposal of glucose. A lack of glucokinase activity leads to reduced Insulin secretion and hyperglycemia and has been implicated as a cause for maturity onset diabetes of the youth (MODY). Heterozygous point mutations in the gene encoding GCK have been detected in individuals suffering from MODY. GCK is regulated by GCKR (glucokinase regulatory protein).

REFERENCES

1. Detheux, M., Vandekerckhove, J. and van Schaftingen, E. 1993. Cloning and sequencing of rat liver cDNAs encoding the regulatory protein of glucokinase. *FEBS Lett.* 321: 111-115.
2. Hosokawa, H., Hosokawa, Y.A. and Leahy, J.L. 1995. Upregulated hexokinase activity in isolated islets from diabetic 90% pancreatectomized rats. *Diabetes* 44: 1328-1333.
3. Bali, D., Svetlanov, A., Lee, H.W., Fusco-DeMane, D., Leiser, M., Li, B., Barzilai, N., Surana, M., Hou, H., Fleischer, N., et al. 1995. Animal model for maturity-onset diabetes of the young generated by disruption of the mouse glucokinase gene. *J. Biol. Chem.* 270: 21464-21467.
4. Liang, Y., Kesavan, P., Wang, L.Q., Niswender, K., Tanizawa, Y., Permutt, M.A., Magnuson, M.A. and Matsuhashi, F.M. 1995. Variable effects of maturity-onset-diabetes-of-youth (MODY)-associated glucokinase mutations on substrate interactions and stability of the enzyme. *Biochem. J.* 309: 167-173.
5. Heimberg, H., De Vos, A., Moens, K., Quartier, E., Bouwens, L., Pipeleers, D., van Schaftingen, E., Madsen, O. and Schuit, F. 1996. The glucose sensor protein glucokinase is expressed in glucagon-producing α cells. *Proc. Natl. Acad. Sci. USA* 93: 7036-7041.
6. Ferre, T., Pujol, A., Riu, E., Bosch, F. and Valera, A. 1996. Correction of diabetic alterations by glucokinase. *Proc. Natl. Acad. Sci. USA* 93: 7225-7230.
7. Tu, J. and Tuch, B.E. 1996. Glucose regulates the maximal velocities of glucokinase and glucose utilization in the immature fetal rat pancreatic islet. *Diabetes* 45: 1068-1075.

CHROMOSOMAL LOCATION

Genetic locus: Gckr (mouse) mapping to 5 B1.

PRODUCT

GCKR (m): 293T Lysate represents a lysate of mouse GCKR transfected 293T cells and is provided as 100 μ g protein in 200 μ l SDS-PAGE buffer.

STORAGE

Store at -20° C. Repeated freezing and thawing should be minimized. Sample vial should be boiled once prior to use. Non-hazardous. No MSDS required.

APPLICATIONS

GCKR (m): 293T Lysate is suitable as a Western Blotting positive control for mouse reactive GCKR antibodies. Recommended use: 10-20 μ l per lane.

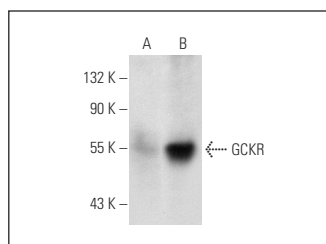
Control 293T Lysate: sc-117752 is available as a Western Blotting negative control lysate derived from non-transfected 293T cells.

GCKR (G-6): sc-166841 is recommended as a positive control antibody for Western Blot analysis of enhanced mouse GCKR expression in GCKR transfected 293T cells (starting dilution 1:100, dilution range 1:100-1:1,000).

RECOMMENDED SUPPORT REAGENTS

To ensure optimal results, the following support reagents are recommended:
 1) Western Blotting: use m-IgG κ BP-HRP: sc-516102 or m-IgG κ BP-HRP (Cruz Marker): sc-516102-CM (dilution range: 1:1000-1:10000), Cruz Marker™ Molecular Weight Standards: sc-2035, UltraCruz® Blocking Reagent: sc-516214 and Western Blotting Luminol Reagent: sc-2048.

DATA



GCKR (G-6): sc-166841. Western blot analysis of GCKR expression in non-transfected: sc-117752 (A) and mouse GCKR transfected: sc-120452 (B) 293T whole cell lysates.

RESEARCH USE

For research use only, not for use in diagnostic procedures.

PROTOCOLS

See our web site at www.scbt.com for detailed protocols and support products.