



# SZABO SCANDIC

Part of Europa Biosite

## Produktinformation



Forschungsprodukte & Biochemikalien



Zellkultur & Verbrauchsmaterial



Diagnostik & molekulare Diagnostik



Laborgeräte & Service

Weitere Information auf den folgenden Seiten!  
See the following pages for more information!



### Lieferung & Zahlungsart

siehe unsere [Liefer- und Versandbedingungen](#)

### Zuschläge

- Mindermengenzuschlag
- Trockeneiszuschlag
- Gefahrgutzuschlag
- Expressversand

### SZABO-SCANDIC HandelsgmbH

Quellenstraße 110, A-1100 Wien

T. +43(0)1 489 3961-0

F. +43(0)1 489 3961-7

[mail@szabo-scandic.com](mailto:mail@szabo-scandic.com)

[www.szabo-scandic.com](http://www.szabo-scandic.com)

[linkedin.com/company/szaboscandic](https://www.linkedin.com/company/szaboscandic) 

# GPI-PLD (m): 293T Lysate: sc-120582

## BACKGROUND

Phosphatidylinositol-glycan-specific phospholipase D (GPI-PLD) is a high-density lipoprotein-associated protein found on chromosome 6p22.2 that specifically hydrolyzes the inositol phosphate linkage in proteins anchored by phosphatidylinositol-glycans (PI-Gs). GPI-PLD is found in serum, liver, cerebrospinal fluid and in milk. The majority of plasma GPI-PLD appears to be specifically associated with a small, discrete and minor fraction of lipoproteins containing apoA-I and apoA-IV. Serum GPI-PLD activity is reduced over 75% in systemic inflammatory response syndrome and the downregulation of GPI-PLD could play an important role in the control of proinflammatory responses.

## REFERENCES

1. Scallion, B.J., Fung, W.J., Tsang, T.C., Li, S., Kado-Fong, H., Huang, K.S. and Kochan, J.P. 1991. Primary structure and functional activity of a phosphatidylinositol-glycan-specific phospholipase D. *Science* 252: 446-448.
2. Stieger, S., Diem, S., Jakob, A. and Brodbeck, U. 1991. Enzymatic properties of phosphatidylinositol-glycan-specific phospholipase C from rat liver and phosphatidylinositol-glycan-specific phospholipase D from rat serum. *Eur. J. Biochem.* 197: 67-73.
3. Hoener, M.C. and Brodbeck, U. 1992. Phosphatidylinositol-glycan-specific phospholipase D is an amphiphilic glycoprotein that in serum is associated with high-density lipoproteins. *Eur. J. Biochem.* 206: 747-757.
4. Scallion, B.J., Kado-Fong, H., Nettleton, M.Y. and Kochan, J.P. 1992. A novel strategy for secreting proteins: use of phosphatidylinositol-glycan-specific phospholipase D to release chimeric phosphatidylinositol-glycan anchored proteins. *Biotechnology* 10: 550-556.
5. Deeg, M.A., Bowen, R.F., Williams, M.D., Olson, L.K., Kirk, E.A. and LeBoeuf, R.C. 2001. Increased expression of GPI-specific phospholipase D in mouse models of type 1 diabetes. *Am. J. Physiol. Endocrinol. Metab.* 281: 147-154.
6. Deeg, M.A., Bierman, E.L. and Cheung, M.C. 2001. GPI-specific phospholipase D associates with an apoA-I- and apoA-IV-containing complex. *J. Lipid Res.* 42: 442-451.
7. Du, X. and Low, M.G. 2001. Downregulation of glycosylphosphatidylinositol-specific phospholipase D induced by lipopolysaccharide and oxidative stress in the murine monocyte-macrophage cell line RAW 264.7. *Infect. Immun.* 69: 3214-3223.

## CHROMOSOMAL LOCATION

Genetic locus: *Gpld1* (mouse) mapping to 13 A3.1.

## PRODUCT

GPI-PLD (m): 293T Lysate represents a lysate of mouse GPI-PLD transfected 293T cells and is provided as 100 µg protein in 200 µl SDS-PAGE buffer.

## STORAGE

Store at -20° C. Repeated freezing and thawing should be minimized. Sample vial should be boiled once prior to use. Non-hazardous. No MSDS required.

## APPLICATIONS

GPI-PLD (m): 293T Lysate is suitable as a Western Blotting positive control for mouse reactive GPI-PLD antibodies. Recommended use: 10-20 µl per lane.

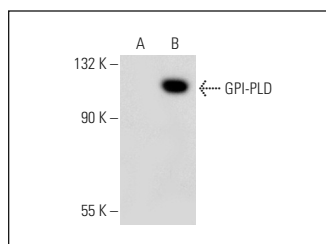
Control 293T Lysate: sc-117752 is available as a Western Blotting negative control lysate derived from non-transfected 293T cells.

GPI-PLD (E-5): sc-365873 is recommended as a positive control antibody for Western Blot analysis of enhanced mouse GPI-PLD expression in GPI-PLD transfected 293T cells (starting dilution 1:100, dilution range 1:100-1:1,000).

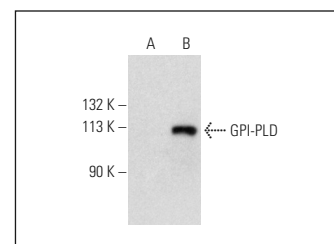
## RECOMMENDED SUPPORT REAGENTS

To ensure optimal results, the following support reagents are recommended:  
1) Western Blotting: use m-IgGκ BP-HRP: sc-516102 or m-IgGκ BP-HRP (Cruz Marker): sc-516102-CM (dilution range: 1:1000-1:10000), Cruz Marker™ Molecular Weight Standards: sc-2035, UltraCruz® Blocking Reagent: sc-516214 and Western Blotting Luminol Reagent: sc-2048.

## DATA



GPI-PLD (E-5): sc-365873. Western blot analysis of GPI-PLD expression in non-transfected: sc-117752 (A) and mouse GPI-PLD transfected: sc-120582 (B) 293T whole cell lysates.



GPI-PLD (D-10): sc-365096. Western blot analysis of GPI-PLD expression in non-transfected: sc-117752 (A) and mouse GPI-PLD transfected: sc-120582 (B) 293T whole cell lysates.

## RESEARCH USE

For research use only, not for use in diagnostic procedures.

## PROTOCOLS

See our web site at [www.scbt.com](http://www.scbt.com) for detailed protocols and support products.