



SZABO SCANDIC

Part of Europa Biosite

Produktinformation



Forschungsprodukte & Biochemikalien



Zellkultur & Verbrauchsmaterial



Diagnostik & molekulare Diagnostik



Laborgeräte & Service

Weitere Information auf den folgenden Seiten!
See the following pages for more information!



Lieferung & Zahlungsart

siehe unsere [Liefer- und Versandbedingungen](#)

Zuschläge

- Mindermengenzuschlag
- Trockeneiszuschlag
- Gefahrgutzuschlag
- Expressversand

SZABO-SCANDIC HandelsgmbH

Quellenstraße 110, A-1100 Wien

T. +43(0)1 489 3961-0

F. +43(0)1 489 3961-7

mail@szabo-scandic.com

www.szabo-scandic.com

[linkedin.com/company/szaboscandic](https://www.linkedin.com/company/szaboscandic) 

INDOL1 (m): 293T Lysate: sc-121063

BACKGROUND

Tryptophan is an essential amino acid that is necessary for protein synthesis, serotonin and melatonin biosynthesis and energy production; energy being a product of the catabolism of tryptophan through the kynurenine pathway. The kynurenine pathway has many downstream metabolites which may be a part of physiological or patho-physiological processes. INDOL1 (indoleamine 2,3-dioxygenase-like protein 1) is an enzyme that catalyzes the first step of the kynurenine pathway of tryptophan metabolism. INDOL1 is also known as IDO2 (indoleamine 2,3-dioxygenase 2) and is a 407 amino acid protein that is expressed in various tissues, including liver, small intestine, spleen, placenta, thymus, lung, brain, kidney, colon and dendritic cells. INDOL1 is selectively inhibited by D-1MT (1-methyl-d-tryptophan), which also inhibits IDO (indoleamine 2,3-dioxygenase) and is significant because IDO expression causes suppression of T cell responses to tumors in dendritic cells. The inhibition of INDOL1 by D-1MT suggests a common function in immunomodulation. In the human INDOL1 gene, two single nucleotide polymorphisms have been detected which abolish the enzymatic function of INDOL1.

REFERENCES

1. Fernstrom, J.D. and Wurtman, R.J. 1971. Brain serotonin content: physiological dependence on plasma tryptophan levels. *Science* 173: 149-152.
2. Fox, C.J., et al. 2005. Fuel feeds function: energy metabolism and the T-cell response. *Nat. Rev. Immunol.* 5: 844-852.
3. Metz, R., et al. 2007. Novel tryptophan catabolic enzyme IDO2 is the preferred biochemical target of the antitumor indoleamine 2,3-dioxygenase inhibitory compound D-1-methyl-tryptophan. *Cancer Res.* 67: 7082-7087.
4. Murray, M.F. 2007. The human indoleamine 2,3-dioxygenase gene and related human genes. *Curr. Drug Metab.* 8: 197-200.
5. Ball, H.J., et al. 2007. Characterization of an indoleamine 2,3-dioxygenase-like protein found in humans and mice. *Gene* 396: 203-213.
6. Löb, S. and Konigsrainer, A. 2008. Is IDO a key enzyme bridging the gap between tumor escape and tolerance induction? *Langenbecks Arch. Surg.* 393: 995-1003.
7. Prendergast, G.C. 2008. Immune escape as a fundamental trait of cancer: focus on IDO. *Oncogene* 27: 3889-3900.
8. Online Mendelian Inheritance in Man, OMIM™. 2008. Johns Hopkins University, Baltimore, MD. MIM Number: 612129. World Wide Web URL: <http://www.ncbi.nlm.nih.gov/omim/>
9. Ball, H.J., et al. 2009. Indoleamine 2,3-dioxygenase-2; a new enzyme in the kynurenine pathway. *Int. J. Biochem. Cell Biol.* 41: 467-471.

CHROMOSOMAL LOCATION

Genetic locus: *Ido2* (mouse) mapping to 8 A2.

PRODUCT

INDOL1 (m): 293T Lysate represents a lysate of mouse INDOL1 transfected 293T cells and is provided as 100 µg protein in 200 µl SDS-PAGE buffer.

APPLICATIONS

INDOL1 (m): 293T Lysate is suitable as a Western Blotting positive control for mouse reactive INDOL1 antibodies. Recommended use: 10-20 µl per lane.

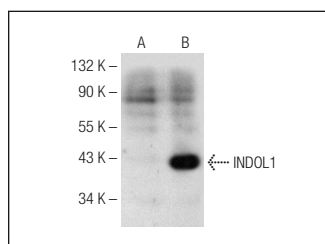
Control 293T Lysate: sc-117752 is available as a Western Blotting negative control lysate derived from non-transfected 293T cells.

INDOL1 (C-9): sc-374159 is recommended as a positive control antibody for Western Blot analysis of enhanced mouse INDOL1 expression in INDOL1 transfected 293T cells (starting dilution 1:100, dilution range 1:100-1:1,000).

RECOMMENDED SUPPORT REAGENTS

To ensure optimal results, the following support reagents are recommended:
 1) Western Blotting: use m-IgGκ BP-HRP: sc-516102 or m-IgGκ BP-HRP (Cruz Marker): sc-516102-CM (dilution range: 1:1000-1:10000), Cruz Marker™ Molecular Weight Standards: sc-2035, UltraCruz® Blocking Reagent: sc-516214 and Western Blotting Luminol Reagent: sc-2048.

DATA



INDOL1 (C-9): sc-374159. Western blot analysis of INDOL1 expression in non-transfected: sc-117752 (A) and mouse INDOL1 transfected: sc-121063 (B) 293T whole cell lysates.

STORAGE

Store at -20° C. Repeated freezing and thawing should be minimized. Sample vial should be boiled once prior to use. Non-hazardous. No MSDS required.

RESEARCH USE

For research use only, not for use in diagnostic procedures.

PROTOCOLS

See our web site at www.scbt.com for detailed protocols and support products.