



# SZABO SCANDIC

Part of Europa Biosite

## Produktinformation



Forschungsprodukte & Biochemikalien



Zellkultur & Verbrauchsmaterial



Diagnostik & molekulare Diagnostik



Laborgeräte & Service

Weitere Information auf den folgenden Seiten!  
See the following pages for more information!



### Lieferung & Zahlungsart

siehe unsere [Liefer- und Versandbedingungen](#)

### Zuschläge

- Mindermengenzuschlag
- Trockeneiszuschlag
- Gefahrgutzuschlag
- Expressversand

### SZABO-SCANDIC HandelsgmbH

Quellenstraße 110, A-1100 Wien

T. +43(0)1 489 3961-0

F. +43(0)1 489 3961-7

[mail@szabo-scandic.com](mailto:mail@szabo-scandic.com)

[www.szabo-scandic.com](http://www.szabo-scandic.com)

[linkedin.com/company/szaboscandic](https://www.linkedin.com/company/szaboscandic) 

# IscU1/2 (m): 293T Lysate: sc-121116

## BACKGROUND

Iron-sulfur (Fe-S) clusters are cofactors that are essential for a wide variety of processes, including facilitation of electron transfer processes in oxidative phosphorylation, catalysis of enzymatic reactions in aconitase and dehydratases and maintenance of structural integrity in the DNA repair enzyme endonuclease III. In bacteria and eukaryotes, several new genes are implicated in the biogenesis of Fe-S cluster-containing proteins. IscU1 and IscU2, homologs to bacterial IscU and NifU, are iron cluster-assembly proteins. Deletion of either IscU1 or IscU2 results in increased accumulation of iron within the mitochondria, loss of activity of the [4Fe-4S] aconitase enzyme and suppression of oxidative damage in cells lacking cytosolic copper/zinc superoxide dismutase. IscU1 and IscU2 are regulated by the iron status of the cell and localize primarily in the mitochondria. In human cells, alternative splicing of IscU pre-mRNA results in synthesis of these two proteins, which differ at the N-terminus and localize either to the cytosol (IscU1) or the mitochondria (IscU2). IscU proteins interact with IscS, a cysteine desulfurase, to sequester inorganic sulfur for Fe-S cluster assembly. IscU-IscS protein complex localizes in both mitochondria and cytosol, implying that Fe-S cluster assembly takes place in multiple subcellular compartments in mammalian cells.

## REFERENCES

1. Beinert, H. and Holm, R.H. 1997 Iron-sulfur clusters: nature's modular, multipurpose structure. *Science* 277: 653-659.
2. Zheng, L., Cash, V.L., Flint, D.H. and Dean, D.R. 1998. Assembly of iron-clusters: identification of an IscSUA-HSCBA-FDX gene cluster from *Azotobacter vinelandii*. *J. Biol. Chem.* 273: 13264-13272.
3. Garland, S.A., Hoff, K., Vickery, L.E. and Culotta, V.C. 1999. *Saccharomyces cerevisiae* ISU1 and ISU2: members of a well-conserved gene family for iron-sulfur cluster assembly. *J. Mol. Biol.* 294: 897-907.
4. Schilke, B., Voisine, C., Beinet, H. and Craig, E. 1999. Evidence for a conserved system for iron metabolism in the mitochondria of *Saccharomyces cerevisiae*. *Proc. Natl. Acad. Sci. USA* 96: 10206-10211.
5. Tong, W.H. and Rouault, T. 2000. Distinct iron-sulfur cluster assembly complexes exist in the cytosol and mitochondria of human cells. *EMBO J.* 19: 5692-5700.

## CHROMOSOMAL LOCATION

Genetic locus: Iscu (mouse) mapping to 5 F.

## PRODUCT

IscU1/2 (m): 293T Lysate represents a lysate of mouse IscU1/2 transfected 293T cells and is provided as 100 µg protein in 200 µl SDS-PAGE buffer.

## STORAGE

Store at -20° C. Repeated freezing and thawing should be minimized. Sample vial should be boiled once prior to use. Non-hazardous. No MSDS required.

## PROTOCOLS

See our web site at [www.scbt.com](http://www.scbt.com) for detailed protocols and support products.

## APPLICATIONS

IscU1/2 (m): 293T Lysate is suitable as a Western Blotting positive control for mouse reactive IscU1/2 antibodies. Recommended use: 10-20 µl per lane.

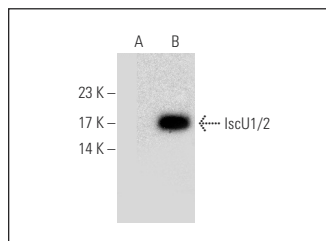
Control 293T Lysate: sc-117752 is available as a Western Blotting negative control lysate derived from non-transfected 293T cells.

IscU1/2 (B-12): sc-271468 is recommended as a positive control antibody for Western Blot analysis of enhanced mouse IscU1/2 expression in IscU1/2 transfected 293T cells (starting dilution 1:100, dilution range 1:100-1:1,000).

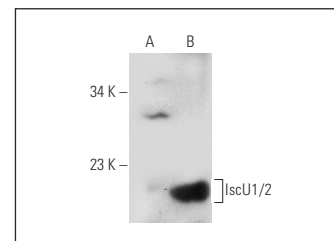
## RECOMMENDED SUPPORT REAGENTS

To ensure optimal results, the following support reagents are recommended:  
 1) Western Blotting: use m-IgGκ BP-HRP: sc-516102 or m-IgGκ BP-HRP (Cruz Marker): sc-516102-CM (dilution range: 1:1000-1:10000), Cruz Marker™  
 Molecular Weight Standards: sc-2035, UltraCruz® Blocking Reagent: sc-516214 and Western Blotting Luminol Reagent: sc-2048.

## DATA



IscU1/2 (B-12): sc-271468. Western blot analysis of IscU1/2 expression in non-transfected: sc-117752 (A) and mouse IscU1/2 transfected: sc-121116 (B) 293T whole cell lysates.



IscU1/2 (B-3): sc-271536. Western blot analysis of IscU1/2 expression in non-transfected: sc-117752 (A) and mouse IscU1/2 transfected: sc-121116 (B) 293T whole cell lysates.

## RESEARCH USE

For research use only, not for use in diagnostic procedures.