



SZABO SCANDIC

Part of Europa Biosite

Produktinformation



Forschungsprodukte & Biochemikalien



Zellkultur & Verbrauchsmaterial



Diagnostik & molekulare Diagnostik



Laborgeräte & Service

Weitere Information auf den folgenden Seiten!
See the following pages for more information!



Lieferung & Zahlungsart

siehe unsere [Liefer- und Versandbedingungen](#)

Zuschläge

- Mindermengenzuschlag
- Trockeneiszuschlag
- Gefahrgutzuschlag
- Expressversand

SZABO-SCANDIC HandelsgmbH

Quellenstraße 110, A-1100 Wien

T. +43(0)1 489 3961-0

F. +43(0)1 489 3961-7

mail@szabo-scandic.com

www.szabo-scandic.com

[linkedin.com/company/szaboscandic](https://www.linkedin.com/company/szaboscandic) 

KBP (m): 293T Lysate: sc-121185

BACKGROUND

KBP (KIF1-binding protein), also known as KIAA1279, is a 621 amino acid mitochondrial protein that is highly expressed in heart, brain, ovary, testis and spinal cord, with lower levels of expression found in most adult tissues. Belonging to the KIF1-binding protein family, KBP may be involved in the regulation of mitochondrial transport by modulating the motor activity of KIF1B. KBP is also required for the organization of axonal microtubules, as well as for the maintenance of axonal growth during peripheral and central nervous system development. The gene encoding KBP maps to human chromosome 10q21.3 and mouse chromosome 10 B4. Defects to the gene encoding KBP has been linked to Goldberg-Shprintzen megacolon syndrome, a neurological disorder characterized by microcephaly, mental retardation and facial dysmorphism.

REFERENCES

- Brooks, A.S., Bertoli-Avella, A.M., Burzynski, G.M., Breedveld, G.J., Osinga, J., Boven, L.G., Hurst, J.A., Mancini, G.M., Lequin, M.H., de Co, R.F., Matera, I., de Graaff, E., Meijers, C., Willems, P.J., Tibboel, D., Oostra, B.A. and Hofstra, R.M. 2005. Homozygous nonsense mutations in KIAA1279 are associated with malformations of the central and enteric nervous systems. *Am. J. Hum. Genet.* 77: 120-126.
- Wozniak, M.J., Melzer, M., Dorner, C., Haring, H.U. and Lammers, R. 2005. The novel protein KBP regulates mitochondria localization by interaction with a kinesin-like protein. *BMC Cell Biol.* 6: 35.
- Murphy, H.R., Carver, M.J., Brooks, A.S., Kenny, S.E. and Ellis, I.H. 2006. Two brothers with Goldberg-Shprintzen syndrome. *Clin. Dysmorphol.* 15: 165-169.
- de Wit, M.C., Lequin, M.H., de Co, I.F., Brusse, E., Halley, D.J., van de Graaf, R., Schot, R., Verheijen, F.W. and Mancini, G.M. 2008. Cortical brain malformations: effect of clinical, neuroradiological, and modern genetic classification. *Arch. Neurol.* 65: 358-366.
- Lyons, D.A., Naylor, S.G., Mercurio, S., Dominguez, C. and Talbot, W.S. 2008. KBP is essential for axonal structure, outgrowth and maintenance in zebrafish, providing insight into the cellular basis of Goldberg-Shprintzen syndrome. *Development* 135: 599-608.
- Jiang, Q., Ho, Y.Y., Hao, L., Nichols Berrios, C. and Chakravarti, A. 2011. Copy number variants in candidate genes are genetic modifiers of Hirschsprung disease. *PLoS ONE* 6: e21219.

CHROMOSOMAL LOCATION

Genetic locus: Kif1bp (mouse) mapping to 10 B4.

PRODUCT

KBP (m): 293T Lysate represents a lysate of mouse KBP transfected 293T cells and is provided as 100 µg protein in 200 µl SDS-PAGE buffer.

STORAGE

Store at -20° C. Repeated freezing and thawing should be minimized. Sample vial should be boiled once prior to use. Non-hazardous. No MSDS required.

APPLICATIONS

KBP (m): 293T Lysate is suitable as a Western Blotting positive control for mouse reactive KBP antibodies. Recommended use: 10-20 µl per lane.

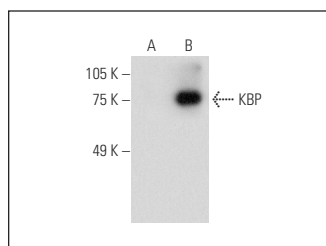
Control 293T Lysate: sc-117752 is available as a Western Blotting negative control lysate derived from non-transfected 293T cells.

KBP (H-12): sc-390449 is recommended as a positive control antibody for Western Blot analysis of enhanced mouse KBP expression in KBP transfected 293T cells (starting dilution 1:100, dilution range 1:100-1:1,000).

RECOMMENDED SUPPORT REAGENTS

To ensure optimal results, the following support reagents are recommended: 1) Western Blotting: use m-IgGκ BP-HRP: sc-516102 or m-IgGκ BP-HRP (Cruz Marker): sc-516102-CM (dilution range: 1:1000-1:10000), Cruz Marker™ Molecular Weight Standards: sc-2035, UltraCruz® Blocking Reagent: sc-516214 and Western Blotting Luminol Reagent: sc-2048.

DATA



KBP (H-12): sc-390449. Western blot analysis of KBP expression in non-transfected: sc-117752 (A) and mouse KBP transfected: sc-121185 (B) 293T whole cell lysates.

RESEARCH USE

For research use only, not for use in diagnostic procedures.

PROTOCOLS

See our web site at www.scbt.com for detailed protocols and support products.