



SZABO SCANDIC

Part of Europa Biosite

Produktinformation



Forschungsprodukte & Biochemikalien



Zellkultur & Verbrauchsmaterial



Diagnostik & molekulare Diagnostik



Laborgeräte & Service

Weitere Information auf den folgenden Seiten!
See the following pages for more information!



Lieferung & Zahlungsart

siehe unsere [Liefer- und Versandbedingungen](#)

Zuschläge

- Mindermengenzuschlag
- Trockeneiszuschlag
- Gefahrgutzuschlag
- Expressversand

SZABO-SCANDIC HandelsgmbH

Quellenstraße 110, A-1100 Wien

T. +43(0)1 489 3961-0

F. +43(0)1 489 3961-7

mail@szabo-scandic.com

www.szabo-scandic.com

[linkedin.com/company/szaboscandic](https://www.linkedin.com/company/szaboscandic) 

KLF6 (m): 293T Lysate: sc-121225

BACKGROUND

The Krüppel-type zinc finger transcription factors comprise a conserved family of DNA binding proteins that are important in developmental regulation. The Krüppel zinc finger transcription factor was initially identified in *Drosophila* as a segmentation gene. Krüppel-like factors that have been characterized in mammals include EKLF, LKLF and GKLF. KLF6, also designated Zf9 or CPBP (for core promoter-binding protein), is a Krüppel-like zinc finger containing transcription factor. KLF6 is rapidly induced during hepatic stellate cell activation, and it has been shown to transactivate a reporter gene driven by the collagen I promoter, suggesting a role in the response to tissue injury. KLF6 has also been shown to bind to a TATA box-less promoter corresponding to a pregnancy-specific glycoprotein gene.

REFERENCES

- Schuh, R., et al. 1986. A conserved family of nuclear proteins containing structural elements of the finger protein encoded by Krüppel, a *Drosophila* segmentation gene. *Cell* 47: 1025-1032.
- Ruppert, J.M., et al. 1986. The GLI-Krüppel family of human genes. *Mol. Cell. Biol.* 8: 1025-1032.
- Ollo, R. et al. 1987. *Drosophila* Krüppel gene product produced in a baculovirus expression system is a nuclear phosphoprotein that binds to DNA. *Proc. Natl. Acad. Sci. USA* 84: 5700-5704.
- Anderson, K.P., et al. 1995. Isolation of a gene encoding a functional zinc finger protein homologous to erythroid Krüppel-like factor: identification of a new multigene family. *Mol. Cell. Biol.* 15: 5957-5965.
- Bieker, J.J. 1996. Isolation, genomic structure, and expression of human erythroid Krüppel-like factor (EKLF). *DNA Cell Biol.* 15: 347-352.
- Shields, J.M., et al. 1996. Identification and characterization of a gene encoding a gut-enriched Krüppel-like factor expressed during growth arrest. *J. Biol. Chem.* 271: 20009-20017.
- Koritschoner, N.P., et al. 1997. A novel human zinc finger protein that interacts with the core promoter element of a TATA box-less gene. *J. Biol. Chem.* 272: 9573-9580.
- Ratziu, V., et al. 1998. Zf9, a Krüppel-like transcription factor up-regulated *in vivo* during early hepatic fibrosis. *Proc. Natl. Acad. Sci. USA* 95: 9500-9505.
- Sirach, E. et al. 2007. KLF6 transcription factor protects hepatocellular carcinoma-derived cells from apoptosis. *Cell Death Differ.* 14: 1202-1210.

CHROMOSOMAL LOCATION

Genetic locus: *Klf6* (mouse) mapping to 13 A1.

PRODUCT

KLF6 (m): 293T Lysate represents a lysate of mouse KLF6 transfected 293T cells and is provided as 100 µg protein in 200 µl SDS-PAGE buffer.

STORAGE

Store at -20° C. Repeated freezing and thawing should be minimized. Sample vial should be boiled once prior to use. Non-hazardous. No MSDS required.

APPLICATIONS

KLF6 (m): 293T Lysate is suitable as a Western Blotting positive control for mouse reactive KLF6 antibodies. Recommended use: 10-20 µl per lane.

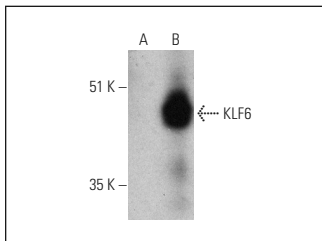
Control 293T Lysate: sc-117752 is available as a Western Blotting negative control lysate derived from non-transfected 293T cells.

KLF6 (E-10) HRP: sc-365633 HRP is recommended as a positive control antibody for Western Blot analysis of enhanced mouse KLF6 expression in KLF6 transfected 293T cells (starting dilution 1:100, dilution range 1:100-1:1,000).

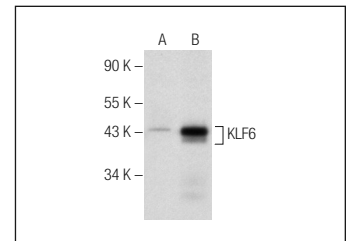
RECOMMENDED SUPPORT REAGENTS

To ensure optimal results, the following support reagents are recommended:
 1) Western Blotting: use m-IgGκ BP-HRP: sc-516102 or m-IgGκ BP-HRP (Cruz Marker): sc-516102-CM (dilution range: 1:1000-1:10000), Cruz Marker™ Molecular Weight Standards: sc-2035, UltraCruz® Blocking Reagent: sc-516214 and Western Blotting Luminol Reagent: sc-2048.

DATA



KLF6 (E-10) HRP: sc-365633 HRP. Direct western blot analysis of KLF6 expression in non-transfected: sc-117752 (A) and mouse KRTAP13 transfected: sc-121255 (B) 293T whole cell lysates.



KLF6 (E-10): sc-365633. Western blot analysis of KLF6 expression in non-transfected: sc-117752 (A) and mouse KLF6 transfected: sc-121225 (B) 293T whole cell lysates.

RESEARCH USE

For research use only, not for use in diagnostic procedures.

PROTOCOLS

See our web site at www.scbt.com for detailed protocols and support products.