



SZABO SCANDIC

Part of Europa Biosite

Produktinformation



Forschungsprodukte & Biochemikalien



Zellkultur & Verbrauchsmaterial



Diagnostik & molekulare Diagnostik



Laborgeräte & Service

Weitere Information auf den folgenden Seiten!
See the following pages for more information!



Lieferung & Zahlungsart

siehe unsere [Liefer- und Versandbedingungen](#)

Zuschläge

- Mindermengenzuschlag
- Trockeneiszuschlag
- Gefahrgutzuschlag
- Expressversand

SZABO-SCANDIC HandelsgmbH

Quellenstraße 110, A-1100 Wien

T. +43(0)1 489 3961-0

F. +43(0)1 489 3961-7

mail@szabo-scandic.com

www.szabo-scandic.com

[linkedin.com/company/szaboscandic](https://www.linkedin.com/company/szaboscandic) 

LRRC21 (m): 293T Lysate: sc-121405

BACKGROUND

The leucine-rich (LRR) repeat is a 20-30 amino acid motif that forms a hydrophobic α/β horseshoe fold, allowing it to accommodate several leucine residues within a tightly packed core. All LRR repeats contain a variable segment and a highly conserved segment, the latter of which accounts for 11 or 12 residues of the entire LRR motif. The primary function of these motifs is to provide a versatile structural framework to mediate the formation of protein-protein interactions. LRRs are present in a variety of proteins with diverse structure and function, including innate immunity and nervous system development. Several human diseases are associated with mutations in genes encoding LRR-containing proteins. The leucine-rich repeat-containing protein 21 (LRRC21), also designated leucine-rich repeat, immunoglobulin-like domain and transmembrane domain-containing protein 1 (LRIT1) or PAL, is a 623 amino acid protein that contains 6 LRR repeats. LRRC21 is expressed in retina and may play a role in phototransduction.

REFERENCES

- Gomi, F., Imaizumi, K., Yoneda, T., Taniguchi, M., Mori, Y., Miyoshi, K., Hitomi, J., Fujikado, T., Tano, Y. and Tohyama, M. 2000. Molecular cloning of a novel membrane glycoprotein, pal, specifically expressed in photoreceptor cells of the retina and containing leucine-rich repeat. *J. Neurosci.* 20(9): 3206-3213.
- Kobe, B. and Kajava, A.V. 2001. The leucine-rich repeat as a protein recognition motif. *Curr. Opin. Struct. Biol.* 11: 725-732.
- Hofman, P., Hoyng, P., vanderWerf, F., Vrensen, G.F. and Schlingemann, R.O. 2001. Lack of blood-brain barrier properties in microvessels of the prelaminar optic nerve head. *Invest. Ophthalmol. Vis. Sci.* 42: 895-901.
- Hughes, J.M., Brink, A., Witmer, A.N., Hanraads-de Riemer, M., Klaassen, I. and Schlingemann, R.O. 2004. Vascular leucocyte adhesion molecules unaltered in the human retina in diabetes. *Br. J. Ophthalmol.* 88: 566-572.
- Kuiper, E.J., Witmer, A.N., Klaassen, I., Oliver, N., Goldschmeding, R. and Schlingemann, R.O. 2004. Differential expression of connective tissue growth factor in microglia and pericytes in the human diabetic retina. *Br. J. Ophthalmol.* 88: 1082-1087.
- Matsushima, N., Tachi, N., Kuroki, Y., Enkhbayar, P., Osaki, M., Kamiya, M. and Kretsinger, R.H. 2005. Structural analysis of leucine-rich-repeat variants in proteins associated with human diseases. *Cell. Mol. Life Sci.* 62: 2771-2791.

CHROMOSOMAL LOCATION

Genetic locus: *Lrit1* (mouse) mapping to 14 B.

PRODUCT

LRRC21 (m): 293T Lysate represents a lysate of mouse LRRC21 transfected 293T cells and is provided as 100 μ g protein in 200 μ l SDS-PAGE buffer.

STORAGE

Store at -20° C. Repeated freezing and thawing should be minimized. Sample vial should be boiled once prior to use. Non-hazardous. No MSDS required.

APPLICATIONS

LRRC21 (m): 293T Lysate is suitable as a Western Blotting positive control for mouse reactive LRRC21 antibodies. Recommended use: 10-20 μ l per lane.

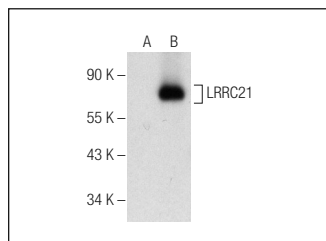
Control 293T Lysate: sc-117752 is available as a Western Blotting negative control lysate derived from non-transfected 293T cells.

LRRC21 (F-10): sc-376508 is recommended as a positive control antibody for Western Blot analysis of enhanced mouse LRRC21 expression in LRRC21 transfected 293T cells (starting dilution 1:100, dilution range 1:100-1:1,000).

RECOMMENDED SUPPORT REAGENTS

To ensure optimal results, the following support reagents are recommended:
1) Western Blotting: use m-IgG κ BP-HRP: sc-516102 or m-IgG κ BP-HRP (Cruz Marker): sc-516102-CM (dilution range: 1:1000-1:10000), Cruz Marker™ Molecular Weight Standards: sc-2035, UltraCruz® Blocking Reagent: sc-516214 and Western Blotting Luminol Reagent: sc-2048.

DATA



LRRC21 (F-10): sc-376508. Western blot analysis of LRRC21 expression in non-transfected: sc-117752 (A) and mouse LRRC21 transfected: sc-121405 (B) 293T whole cell lysates.

RESEARCH USE

For research use only, not for use in diagnostic procedures.

PROTOCOLS

See our web site at www.scbt.com for detailed protocols and support products.