



SZABO SCANDIC

Part of Europa Biosite

Produktinformation



Forschungsprodukte & Biochemikalien



Zellkultur & Verbrauchsmaterial



Diagnostik & molekulare Diagnostik



Laborgeräte & Service

Weitere Information auf den folgenden Seiten!
See the following pages for more information!



Lieferung & Zahlungsart

siehe unsere [Liefer- und Versandbedingungen](#)

Zuschläge

- Mindermengenzuschlag
- Trockeneiszuschlag
- Gefahrgutzuschlag
- Expressversand

SZABO-SCANDIC HandelsgmbH

Quellenstraße 110, A-1100 Wien

T. +43(0)1 489 3961-0

F. +43(0)1 489 3961-7

mail@szabo-scandic.com

www.szabo-scandic.com

[linkedin.com/company/szaboscandic](https://www.linkedin.com/company/szaboscandic) 

Mesothelin (m): 293T Lysate: sc-121605

BACKGROUND

Mesothelin is a glycosylphosphatidylinositol-linked cell-surface molecule expressed in the mesothelial lining of the body cavities and in many tumor cells. Mesothelin is a tumor antigen on the surface of human ovarian cancers and mesotheliomas. Mesothelin immunoreactivity is high in cancers of the ovary (serous papillary, endometrioid and undifferentiated) and pancreas, with less frequent staining seen in adenocarcinomas of the endometrium, lung and stomach/esophagus. In adult mouse tissues the mesothelin transcript is present in lung, heart, spleen, liver, kidney and testis.

REFERENCES

- Chang, K., et al. 1996. Molecular cloning of mesothelin, a differentiation antigen present on mesothelium, mesotheliomas, and ovarian cancers. *Proc. Natl. Acad. Sci. USA* 93: 136-140.
- Chowdhury, P.S., et al. 1997. Isolation of anti-mesothelin antibodies from a phage display library. *Mol. Immunol.* 34: 9-20.
- Hassan, R., et al. 1999. 111Indium-labeled monoclonal antibody K1: biodistribution study in nude mice bearing a human carcinoma xenograft expressing mesothelin. *Int. J. Cancer* 80: 559-563.
- Bera, T.K. and Pastan, I. 2000. Mesothelin is not required for normal mouse development or reproduction. *Mol. Cell. Biol.* 20: 2902-2906.
- Frierson, H.F., Jr., et al. 2003. Large-scale molecular and tissue microarray analysis of mesothelin expression in common human carcinomas. *Hum. Pathol.* 34: 605-609.
- Rump, A., et al. 2004. Binding of ovarian cancer antigen CA125/MUC16 to mesothelin mediates cell adhesion. *J. Biol. Chem.* 279: 9190-9198.

CHROMOSOMAL LOCATION

Genetic locus: Msln (mouse) mapping to 17 A3.3.

PRODUCT

Mesothelin (m): 293T Lysate represents a lysate of mouse Mesothelin transfected 293T cells and is provided as 100 µg protein in 200 µl SDS-PAGE buffer.

STORAGE

Store at -20° C. Repeated freezing and thawing should be minimized. Sample vial should be boiled once prior to use. Non-hazardous. No MSDS required.

APPLICATIONS

Mesothelin (m): 293T Lysate is suitable as a Western Blotting positive control for mouse reactive Mesothelin antibodies. Recommended use: 10-20 µl per lane.

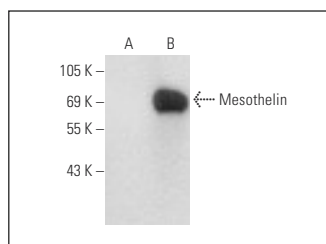
Control 293T Lysate: sc-117752 is available as a Western Blotting negative control lysate derived from non-transfected 293T cells.

Mesothelin (B-3): sc-166203 is recommended as a positive control antibody for Western Blot analysis of enhanced mouse Mesothelin expression in Mesothelin transfected 293T cells (starting dilution 1:100, dilution range 1:100-1:1,000).

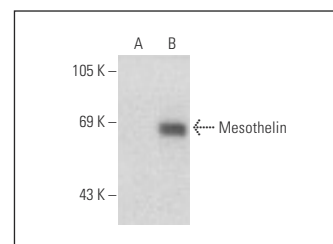
RECOMMENDED SUPPORT REAGENTS

To ensure optimal results, the following support reagents are recommended:
1) Western Blotting: use m-IgGκ BPHRP: sc-516102 or m-IgGκ BPHRP (Cruz Marker): sc-516102-CM (dilution range: 1:1000-1:10000), Cruz Marker™ Molecular Weight Standards: sc-2035, UltraCruz® Blocking Reagent: sc-516214 and Western Blotting Luminol Reagent: sc-2048.

DATA



Mesothelin (B-3): sc-166203. Western blot analysis of Mesothelin expression in non-transfected: sc-117752 (A) and mouse Mesothelin transfected: sc-121605 (B) 293T whole cell lysates.



Mesothelin (G-4): sc-166125. Western blot analysis of Mesothelin expression in non-transfected: sc-117752 (A) and mouse Mesothelin transfected: sc-121605 (B) 293T whole cell lysates.

RESEARCH USE

For research use only, not for use in diagnostic procedures.

PROTOCOLS

See our web site at www.scbt.com for detailed protocols and support products.