



SZABO SCANDIC

Part of Europa Biosite

Produktinformation



Forschungsprodukte & Biochemikalien



Zellkultur & Verbrauchsmaterial



Diagnostik & molekulare Diagnostik



Laborgeräte & Service

Weitere Information auf den folgenden Seiten!
See the following pages for more information!



Lieferung & Zahlungsart

siehe unsere [Liefer- und Versandbedingungen](#)

Zuschläge

- Mindermengenzuschlag
- Trockeneiszuschlag
- Gefahrgutzuschlag
- Expressversand

SZABO-SCANDIC HandelsgmbH

Quellenstraße 110, A-1100 Wien

T. +43(0)1 489 3961-0

F. +43(0)1 489 3961-7

mail@szabo-scandic.com

www.szabo-scandic.com

[linkedin.com/company/szaboscandic](https://www.linkedin.com/company/szaboscandic) 

METTL6 (m): 293T Lysate: sc-121615

BACKGROUND

METTL6 (methyltransferase-like protein 6) is a 255 amino acid enzyme that exists as 2 different isoforms. METTL6 belongs to the methyltransferase superfamily, which includes DNA methyltransferases (Dnmt), histone methyltransferases, catechol-O-methyl transferases, as well as many others. Members of this family have enzymatic activity that results in the transfer of a methyl group to and from DNA, RNA or amino acids. The gene encoding METTL6 maps to human chromosome 3, which is made up of about 214 million bases encoding over 1,100 genes, including a chemokine receptor (CKR) gene cluster and a variety of human cancer-related gene loci. Marfan Syndrome, porphyria, von Hippel-Lindau syndrome, osteogenesis imperfecta and Charcot-Marie-Tooth disease are a few of the numerous genetic diseases associated with chromosome 3.

REFERENCES

- Müller, S., Stanyon, R., Finelli, P., Archidiacono, N. and Wienberg, J. 2000. Molecular cytogenetic dissection of human chromosomes 3 and 21 evolution. *Proc. Natl. Acad. Sci. USA* 97: 206-211.
- Braga, E.A., Kashuba, V.I., Maliukova, A.V., Loginov, V.I., Senchenko, V.N., Bazov, I.V., Kiselev, L.L. and Zabarovskii, E.R. 2003. New tumor suppressor genes in hot spots of human chromosome 3: new methods of identification. *Mol. Biol.* 37: 194-211.
- Muzny, D.M., Scherer, S.E., Kaul, R., Wang, J., Yu, J., Sudbrak, R., Buhay, C.J., Chen, R., Cree, A., Ding, Y., Dugan-Rocha, S., Gill, R., Gunaratne, P., Harris, R.A., Hawes, A.C., Hernandez, J., Hodgson, A.V., Hume, J., Jackson, A., Khan, Z.M., Kovar-Smith, C., Lewis, L.R., Lozado, R.J., et al. 2006. The DNA sequence, annotation and analysis of human chromosome 3. *Nature* 440: 1194-1198.
- Ruiz-Herrera, A. and Robinson, T.J. 2008. Evolutionary plasticity and cancer breakpoints in human chromosome 3. *Bioessays* 30: 1126-1137.
- Hublitz, P., Albert, M. and Peters, A.H. 2009. Mechanisms of transcriptional repression by histone lysine methylation. *Int. J. Dev. Biol.* 53: 335-354.
- Liutkeviciute, Z., Lukinavicius, G., Masevicius, V., Daujotyte, D. and Klimasauskas, S. 2009. Cytosine-5-methyltransferases add aldehydes to DNA. *Nat. Chem. Biol.* 5: 400-402.

CHROMOSOMAL LOCATION

Genetic locus: *Mettl6* (mouse) mapping to 14 B.

PRODUCT

METTL6 (m): 293T Lysate represents a lysate of mouse METTL6 transfected 293T cells and is provided as 100 µg protein in 200 µl SDS-PAGE buffer.

STORAGE

Store at -20° C. Repeated freezing and thawing should be minimized. Sample vial should be boiled once prior to use. Non-hazardous. No MSDS required.

RESEARCH USE

For research use only, not for use in diagnostic procedures.

APPLICATIONS

METTL6 (m): 293T Lysate is suitable as a Western Blotting positive control for mouse reactive METTL6 antibodies. Recommended use: 10-20 µl per lane.

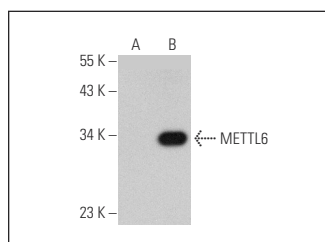
Control 293T Lysate: sc-117752 is available as a Western Blotting negative control lysate derived from non-transfected 293T cells.

METTL6 (F-8): sc-515214 is recommended as a positive control antibody for Western Blot analysis of enhanced mouse METTL6 expression in METTL6 transfected 293T cells (starting dilution 1:100, dilution range 1:100-1:1,000).

RECOMMENDED SUPPORT REAGENTS

To ensure optimal results, the following support reagents are recommended:
1) Western Blotting: use m-IgGκ BP-HRP: sc-516102 or m-IgGκ BP-HRP (Cruz Marker): sc-516102-CM (dilution range: 1:1000-1:10000), Cruz Marker™ Molecular Weight Standards: sc-2035, UltraCruz® Blocking Reagent: sc-516214 and Western Blotting Luminol Reagent: sc-2048.

DATA



METTL6 (F-8): sc-515214. Western blot analysis of METTL6 expression in non-transfected: sc-117752 (A) and mouse METTL6 transfected: sc-121615 (B) 293T whole cell lysates.

PROTOCOLS

See our web site at www.scbt.com for detailed protocols and support products.