



SZABO SCANDIC

Part of Europa Biosite

Produktinformation



Forschungsprodukte & Biochemikalien



Zellkultur & Verbrauchsmaterial



Diagnostik & molekulare Diagnostik



Laborgeräte & Service

Weitere Information auf den folgenden Seiten!
See the following pages for more information!



Lieferung & Zahlungsart

siehe unsere [Liefer- und Versandbedingungen](#)

Zuschläge

- Mindermengenzuschlag
- Trockeneiszuschlag
- Gefahrgutzuschlag
- Expressversand

SZABO-SCANDIC HandelsgmbH

Quellenstraße 110, A-1100 Wien

T. +43(0)1 489 3961-0

F. +43(0)1 489 3961-7

mail@szabo-scandic.com

www.szabo-scandic.com

[linkedin.com/company/szaboscandic](https://www.linkedin.com/company/szaboscandic) 

NELF-A (m): 293T Lysate: sc-122003

BACKGROUND

NELF-A, for negative elongation factor A, is a protein factor required for DRB-sensitive transcription. NELF-A is one of the five components of the multisubunit NELF complex that cooperates with DSIF to repress RNA polymerase II elongation. Control of transcription elongation requires a complex interplay between positive transcription elongation factor b (P-TEFb) and negative transcription elongation factors, DSIF and NELF. DSIF and NELF act as negative transcription elongation factors by increasing the time the polymerase spends at pause sites. DSIF/NELF inhibition of transcription is prevented by P-TEFb in cooperation with FACT. NELF-A is also known as WHSC2 (Wolf-Hirschhorn syndrome candidate 2). Wolf-Hirschhorn syndrome is a multiple malformation syndrome characterized by mental and developmental defects resulting from a hemizygous deletion of the distal short arm of chromosome 4 (4p16.3). The human NELF-A gene maps to chromosome 4p16.3 and encodes a 528 amino acid protein that is expressed in endothelial cells.

REFERENCES

1. Yamaguchi, Y., et al. 1999. NELF, a multisubunit complex containing RD, cooperates with DSIF to repress RNA polymerase II elongation. *Cell* 97: 41-51.
2. Wright, T.J., et al. 1999. Comparative analysis of a novel gene from the Wolf-Hirschhorn/Pitt-Rogers-Danks syndrome critical region. *Genomics* 59: 203-212.
3. Wada, T., et al. 2000. FACT relieves DSIF/NELF-mediated inhibition of transcriptional elongation and reveals functional differences between P-TEFb and TFIIH. *Mol. Cell* 5: 1067-1072.
4. Mariotti, M., et al. 2000. Modulation of WHSC2 expression in human endothelial cells. *FEBS Lett.* 487: 166-170.
5. Ping, Y.H., et al. 2001. DSIF and NELF interact with RNA polymerase II elongation complex and HIV-1 Tat stimulates P-TEFb-mediated phosphorylation of RNA polymerase II and DSIF during transcription elongation. *J. Biol. Chem.* 276: 12951-12958.
6. Renner, D.B., et al. 2001. A highly purified RNA polymerase II elongation control system. *J. Biol. Chem.* 276: 42601-42609.
7. Online Mendelian Inheritance in Man, OMIM™. 2001. Johns Hopkins University, Baltimore, MD. MIM Number: 606026. World Wide Web URL: <http://www.ncbi.nlm.nih.gov/omim/>
8. LocusLink Report (LocusID: 7469). <http://www.ncbi.nlm.nih.gov/LocusLink/>

CHROMOSOMAL LOCATION

Genetic locus: Whsc2 (mouse) mapping to 5 B2.

PRODUCT

NELF-A (m): 293T Lysate represents a lysate of mouse NELF-A transfected 293T cells and is provided as 100 µg protein in 200 µl SDS-PAGE buffer.

RESEARCH USE

For research use only, not for use in diagnostic procedures.

APPLICATIONS

NELF-A (m): 293T Lysate is suitable as a Western Blotting positive control for mouse reactive NELF-A antibodies. Recommended use: 10-20 µl per lane.

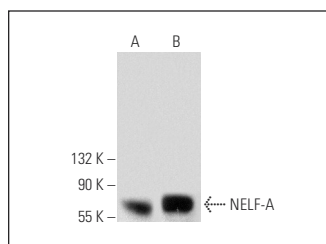
Control 293T Lysate: sc-117752 is available as a Western Blotting negative control lysate derived from non-transfected 293T cells.

NELF-A (F-2): sc-271731 is recommended as a positive control antibody for Western Blot analysis of enhanced mouse NELF-A expression in NELF-A transfected 293T cells (starting dilution 1:100, dilution range 1:100-1:1,000).

RECOMMENDED SUPPORT REAGENTS

To ensure optimal results, the following support reagents are recommended:
 1) Western Blotting: use m-IgGκ BP-HRP: sc-516102 or m-IgGκ BP-HRP (Cruz Marker): sc-516102-CM (dilution range: 1:1000-1:10000), Cruz Marker™ Molecular Weight Standards: sc-2035, UltraCruz® Blocking Reagent: sc-516214 and Western Blotting Luminol Reagent: sc-2048.

DATA



NELF-A (F-2): sc-271731. Western blot analysis of NELF-A expression in non-transfected: sc-117752 (A) and mouse NELF-A transfected: sc-122003 (B) 293T whole cell lysates.

STORAGE

Store at -20° C. Repeated freezing and thawing should be minimized. Sample vial should be boiled once prior to use. Non-hazardous. No MSDS required.

PROTOCOLS

See our web site at www.scbt.com for detailed protocols and support products.