



SZABO SCANDIC

Part of Europa Biosite

Produktinformation



Forschungsprodukte & Biochemikalien



Zellkultur & Verbrauchsmaterial



Diagnostik & molekulare Diagnostik



Laborgeräte & Service

Weitere Information auf den folgenden Seiten!
See the following pages for more information!



Lieferung & Zahlungsart

siehe unsere [Liefer- und Versandbedingungen](#)

Zuschläge

- Mindermengenzuschlag
- Trockeneiszuschlag
- Gefahrgutzuschlag
- Expressversand

SZABO-SCANDIC HandelsgmbH

Quellenstraße 110, A-1100 Wien

T. +43(0)1 489 3961-0

F. +43(0)1 489 3961-7

mail@szabo-scandic.com

www.szabo-scandic.com

[linkedin.com/company/szaboscandic](https://www.linkedin.com/company/szaboscandic) 

NRAGE (m): 293T Lysate: sc-122121

BACKGROUND

The neurotrophin family of growth factors (NGF) function to regulate neuronal differentiation, synaptic activity and neuronal survival, as well as axonal and dendritic growth. The melanoma-associated antigen (MAGE) family consists of a number of antigens recognized by cytotoxic T lymphocytes. Neurotrophin receptor-interacting MAGE homolog (NRAGE) binds the p75 neurotrophin receptor and associates with the plasma membrane when NGF binds p75NTR. The critical factors for NRAGE association lie within the juxtamembrane domain of p75NTR. Overexpression of NRAGE stimulates cell cycle arrest and allows NGF-dependent apoptosis within sympathetic neuron precursors cells. NRAGE is expressed in the medulla oblongata during development and motor-neurons. Structural similarities suggest NRAGE, and the MAGE protein necdin, (Ndn), mediate cell cycle effects through a shared mechanism.

REFERENCES

1. Farinas, I. 1999. Neurotrophin actions during the development of the peripheral nervous system. *Microsc. Res. Tech.* 45: 233-242.
2. McAllister, A.K., et al. 1999. Neurotrophins and synaptic plasticity. *Annu. Rev. Neurosci.* 22: 295-318.
3. Okami, J., et al. 2000. Genetic detection for micrometastasis in lymph node of biliary tract carcinoma. *Clin. Cancer Res.* 6: 2326-2332.
4. Granelli, P., et al. 2000. Melanoma antigen genes 1 and 2 are differentially expressed in human gastric and cardiac carcinomas. *Scand. J. Gastroenterol.* 35: 528-533.
5. Klein, C., et al. 2000. Comparative analysis of genetically modified dendritic cells and tumor cells as therapeutic cancer vaccines. *J. Exp. Med.* 191: 1699-1708.
6. Busam, K.J., et al. 2000. Immunoreactivity with the anti-MAGE antibody 57B in malignant melanoma: frequency of expression and correlation with prognostic parameters. *Mod. Pathol.* 13: 459-465.
7. Kobayashi, Y., et al. 2000. Expression of MAGE, GAGE and BAGE genes in human liver diseases: utility as molecular markers for hepatocellular carcinoma. *J. Hepatol.* 32: 612-617.
8. Salehi, A.H., et al. 2000. NRAGE, NRAGE, a novel MAGE protein, interacts with the p75 neurotrophin receptor and facilitates nerve growth factor-dependent apoptosis. *Neuron* 27: 279-288.

CHROMOSOMAL LOCATION

Genetic locus: Maged1 (mouse) mapping to X C3.

PRODUCT

NRAGE (m): 293T Lysate represents a lysate of mouse NRAGE transfected 293T cells and is provided as 100 µg protein in 200 µl SDS-PAGE buffer.

STORAGE

Store at -20° C. Repeated freezing and thawing should be minimized. Sample vial should be boiled once prior to use. Non-hazardous. No MSDS required.

APPLICATIONS

NRAGE (m): 293T Lysate is suitable as a Western Blotting positive control for mouse reactive NRAGE antibodies. Recommended use: 10-20 µl per lane.

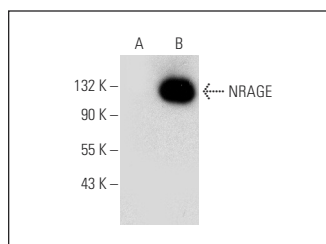
Control 293T Lysate: sc-117752 is available as a Western Blotting negative control lysate derived from non-transfected 293T cells.

NRAGE (H-7): sc-398493 is recommended as a positive control antibody for Western Blot analysis of enhanced mouse NRAGE expression in NRAGE transfected 293T cells (starting dilution 1:100, dilution range 1:100-1:1,000).

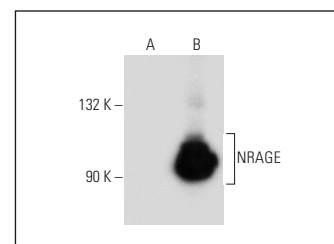
RECOMMENDED SUPPORT REAGENTS

To ensure optimal results, the following support reagents are recommended:
1) Western Blotting: use m-IgGκ BP-HRP: sc-516102 or m-IgGκ BP-HRP (Cruz Marker): sc-516102-CM (dilution range: 1:1000-1:10000), Cruz Marker™ Molecular Weight Standards: sc-2035, UltraCruz® Blocking Reagent: sc-516214 and Western Blotting Luminol Reagent: sc-2048.

DATA



NRAGE (H-7): sc-398493. Western blot analysis of NRAGE expression in non-transfected: sc-117752 (A) and mouse NRAGE transfected: sc-122121 (B) 293T whole cell lysates.



NRAGE (AK47): sc-130434. Western blot analysis of NRAGE expression in non-transfected: sc-117752 (A) and mouse NRAGE transfected: sc-122121 (B) 293T whole cell lysates.

RESEARCH USE

For research use only, not for use in diagnostic procedures.

PROTOCOLS

See our web site at www.scbt.com for detailed protocols and support products.