



SZABO SCANDIC

Part of Europa Biosite

Produktinformation



Forschungsprodukte & Biochemikalien



Zellkultur & Verbrauchsmaterial



Diagnostik & molekulare Diagnostik



Laborgeräte & Service

Weitere Information auf den folgenden Seiten!
See the following pages for more information!



Lieferung & Zahlungsart

siehe unsere [Liefer- und Versandbedingungen](#)

Zuschläge

- Mindermengenzuschlag
- Trockeneiszuschlag
- Gefahrgutzuschlag
- Expressversand

SZABO-SCANDIC HandelsgmbH

Quellenstraße 110, A-1100 Wien

T. +43(0)1 489 3961-0

F. +43(0)1 489 3961-7

mail@szabo-scandic.com

www.szabo-scandic.com

[linkedin.com/company/szaboscandic](https://www.linkedin.com/company/szaboscandic) 

PLC β 3 (m): 293T Lysate: sc-122623

BACKGROUND

Phosphoinositide-specific phospholipase C (PLC) plays a critical role in the initiation of receptor mediated signal transduction through the generation of the two second messengers, inositol 1,4,5-triphosphate and diacylglycerol from phosphatidylinositol 4,5 bisphosphate. A total of eight mammalian PLC isozymes have been described (PLC β 1, PLC β 2, PLC β 3, PLC β 4, PLC γ 1, PLC γ 2, PLC δ 1 and PLC δ 2). The γ -type enzymes are unique in that they contain SH2 and SH3 domains. Moreover, the two γ -type enzymes, but not the β and δ isozymes, are subject to activation by a number of protein tyrosine kinases which associate with their SH2 domains and induce their activation by phosphorylation. In contrast, activation of PLC β 1, PLC β 2 and PLC β 3 is mediated by the α subunits of the G_q class of heterotrimeric G proteins and by certain $\beta\gamma$ G protein subunits. The regulatory mechanisms for PLC δ 1 and PLC δ 2 are not yet resolved.

REFERENCES

- Suh, P., Ryu, S.H., Moon, K.H., Suh, H.W. and Rhee, S.G. 1988. Inositol phospholipid-specific phospholipase C: complete cDNA and protein sequences and sequence homology to tyrosine kinase-related oncogene products. *Proc. Natl. Acad. Sci. USA* 85: 5419-5423.
- Emori, Y., Homma, Y., Sorimachi, H., Kawasaki, H., Nakanishi, O., Suzuki, K. and Takenawa, T. 1989. A second type of rat phosphoinositide-specific phospholipase C containing a Src-related sequence not essential for phosphoinositide-hydrolyzing activity. *J. Biol. Chem.* 264: 21885-21890.
- Koch, C.A., Anderson, D.A., Moran, M.F., Ellis, C. and Pawson, T. 1991. SH2 and SH3 domains: elements that control interactions of cytoplasmic signaling proteins. *Science* 252: 668-674.
- Meldrum, E., Kriz, R.W., Totty, N. and Parker, P.J. 1991. A second gene product of the inositol-phospholipid-specific phospholipase C δ subclass. *Eur. J. Biochem.* 196: 159-165.
- Rhee, S.G. and Choi, K.D. 1992. Regulation of inositol phospholipid-specific phospholipase C isozymes. *J. Biol. Chem.* 267: 12393-12396.
- Kim, M.J., Bahk, Y.Y., Min, D.S., Lee, S., Ryu, S.H. and Suh, P. 1993. Cloning of cDNA encoding rat phospholipase C- β 4, a new member of the phospholipase C. *Biochem. Biophys. Res. Commun.* 194: 706-712.
- Jhon, D., Lee, H., Park, D., Lee, C., Lee, K., Yoo, O.J. and Rhee, S.G. 1993. Cloning, sequencing, purification and G_q -dependent activation of phospholipase C- β 3. *J. Biol. Chem.* 268: 6654-6661.
- Wu, D., Katz, A. and Simon, M.I. 1993. Activation of phospholipase C β 2 by the α and $\beta\gamma$ subunits of trimeric GTP-binding protein. *Proc. Natl. Acad. Sci. USA* 90: 5297-5301.

CHROMOSOMAL LOCATION

Genetic locus: Plcb3 (mouse) mapping to 19 A.

PRODUCT

PLC β 3 (m): 293T Lysate represents a lysate of mouse PLC β 3 transfected 293T cells and is provided as 100 μ g protein in 200 μ l SDS-PAGE buffer.

APPLICATIONS

PLC β 3 (m): 293T Lysate is suitable as a Western Blotting positive control for mouse reactive PLC β 3 antibodies. Recommended use: 10-20 μ l per lane.

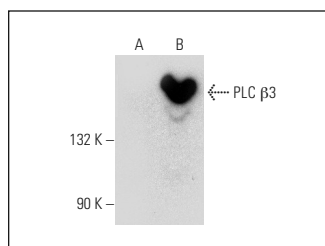
Control 293T Lysate: sc-117752 is available as a Western Blotting negative control lysate derived from non-transfected 293T cells.

PLC β 3 (H-1): sc-271372 is recommended as a positive control antibody for Western Blot analysis of enhanced mouse PLC β 3 expression in PLC β 3 transfected 293T cells (starting dilution 1:100, dilution range 1:100-1:1,000).

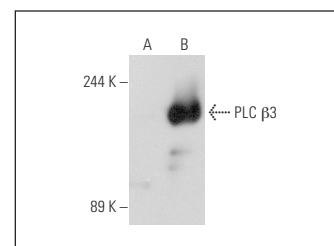
RECOMMENDED SUPPORT REAGENTS

To ensure optimal results, the following support reagents are recommended:
 1) Western Blotting: use m-IgG κ BP-HRP: sc-516102 or m-IgG κ BP-HRP (Cruz Marker): sc-516102-CM (dilution range: 1:1000-1:10000), Cruz Marker™ Molecular Weight Standards: sc-2035, UltraCruz® Blocking Reagent: sc-516214 and Western Blotting Luminol Reagent: sc-2048.

DATA



PLC β 3 (H-1): sc-271372. Western blot analysis of PLC β 3 expression in non-transfected: sc-117752 (A) and mouse PLC β 3 transfected: sc-122623 (B) 293T whole cell lysates.



PLC β 3 (H-3): sc-133140. Western blot analysis of PLC β 3 expression in non-transfected: sc-117752 (A) and mouse PLC β 3 transfected: sc-122623 (B) 293T whole cell lysates.

STORAGE

Store at -20° C. Repeated freezing and thawing should be minimized. Sample vial should be boiled once prior to use. Non-hazardous. No MSDS required.

RESEARCH USE

For research use only, not for use in diagnostic procedures.

PROTOCOLS

See our web site at www.scbt.com for detailed protocols and support products.